



*Lake Life Made Easy on the Shores of White Lake.*

## 9 Glenford Lane 33, Frontenac, ON

**Timberland RV with permanent steel-roof structure, 29-foot deck, and eastern sunrise views at Glenford Trailer Park on White Lake.**

Welcome to your perfect getaway at Glenford Trailer Park on the beautiful shores of White Lake. This well-maintained Timberland RV Model 32RSL offers a comfortable and inviting seasonal retreat, ideal for relaxing weekends, family vacations, or an entire summer of lakeside living. The trailer is protected by a permanent structure built over top and features a durable steel roof, providing added comfort, protection, and peace of mind. A spacious 29-foot deck extends your living space outdoors and creates the perfect spot for entertaining guests, enjoying family meals, or simply relaxing with a morning coffee while taking in the peaceful surroundings. With direct eastern exposure, you'll be treated to stunning sunrise views each morning.

# X13444954

\$ \$74,900

1 Bedroom

1 Bathroom

*Your Total Real Estate Package!*

**Tammy & Heath Gurr**

Royal LePage ProAlliance Realty, Brokerage



[www.gurreathomes.com](http://www.gurreathomes.com)

[info@gurreathomes.com](mailto:info@gurreathomes.com)

**(613) 273-9595**



Not intended to solicit clients under contract. The trademarks REALTOR®, REALTORS® and the REALTOR® logo are controlled by The Canadian Real Estate Association (CREA) and identify real estate professionals who are members of CREA. Used under license. The trademarks MLS®, Multiple Listing Service® and the associated logos are owned by The Canadian Real Estate Association (CREA) and identify the quality of services provided by real estate professionals who are members of CREA. Used under license.



# *Table of Contents*

**9 Glenford Lane 33  
Frontenac, ON**

<b>Features</b>	<b>3</b>
<b>More Information</b>	<b>4</b>
<b>Gallery</b>	<b>7</b>
<b>Floorplan</b>	<b>10</b>
<b>Interactive Links</b>	<b>14</b>
<b>MLS Listing</b>	<b>15</b>
<b>Contact Information</b>	<b>16</b>



## ***Timberland RV with permanent steel-roof structure, 29-foot deck, and eastern sunrise views at Glenford Trailer Park on White Lake***

- **Your Perfect Getaway at Glenford Trailer Park:** Welcome to your perfect getaway at Glenford Trailer Park on the beautiful shores of White Lake. This well-maintained Timberland RV Model 32RSL offers a comfortable and inviting seasonal retreat, ideal for relaxing weekends, family vacations, or an entire summer of lakeside living.
- **The Trailer and Outdoor Living Space:** The trailer is protected by a permanent structure built over top and features a durable steel roof, providing added comfort, protection, and peace of mind. A spacious 29-foot deck extends your living space outdoors and creates the perfect spot for entertaining guests, enjoying family meals, or simply relaxing with a morning coffee while taking in the peaceful surroundings. With direct eastern exposure, you'll be treated to stunning sunrise views each morning.
- **White Lake and Park Amenities:** The property is just a short walk from White Lake, where you can enjoy swimming, boating, fishing, and countless other recreational activities. The park features a beautiful sandy beach, community docks, and convenient canoe and kayak storage racks, making it easy to take full advantage of everything the lake has to offer. Glenford Trailer Park is known for its friendly atmosphere and exceptional waterfront amenities. Whether you enjoy paddling along the shoreline, casting a line from the dock, or spending the afternoon at the beach, this location offers something for everyone.
- **Explore Westport and Beyond:** When you're ready to explore beyond the lake, the charming village of Westport is only a scenic 25-minute drive to the east. Westport offers unique boutiques, waterfront dining, cafes, grocery stores, and local attractions, making it a wonderful destination for day trips and evenings out. Whether you're seeking a peaceful retreat, a family-friendly summer escape, or a place to create lasting memories near the water, this property offers an exceptional opportunity to enjoy the best of White Lake living.

### **Directions**

- HWY 38 North, East on White Lake Road, turn on Glenford Lane follow to lot #33

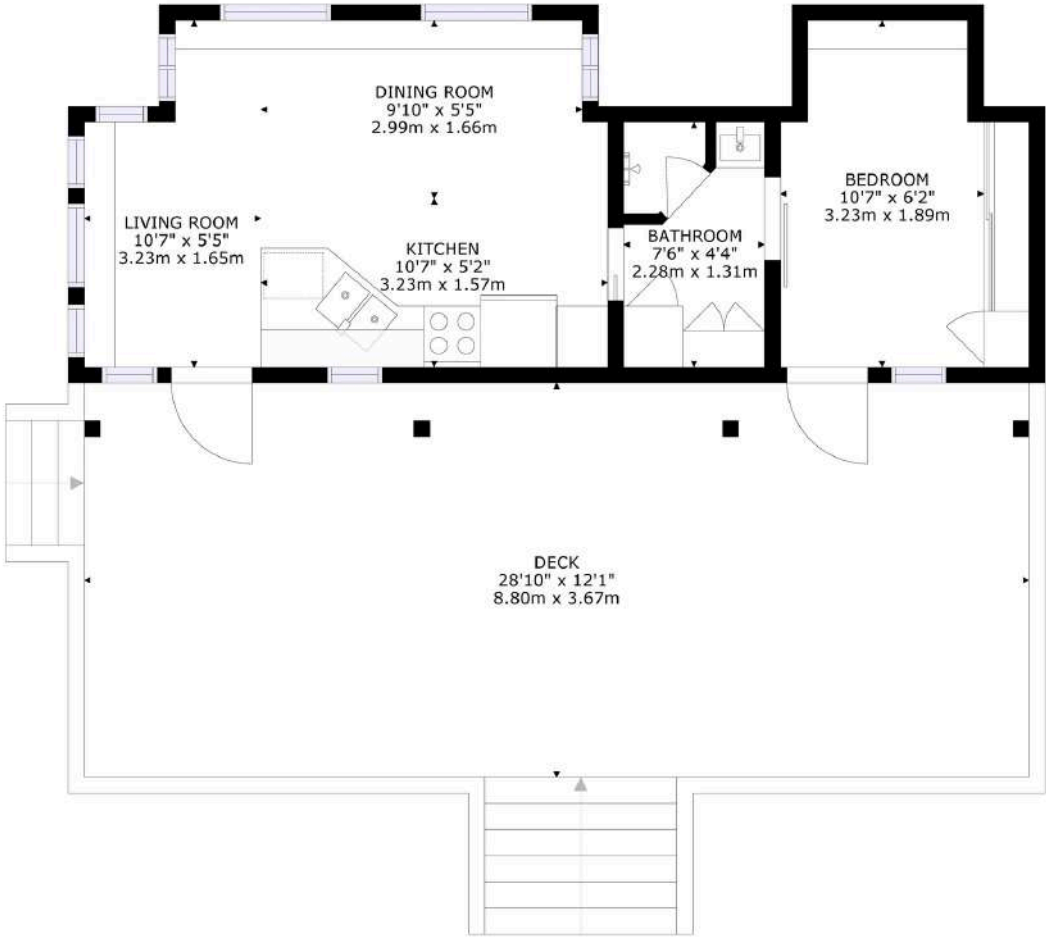
# MORE INFORMATION

## Features Include:

- Timberland RV Model 32RSL
- Permanent structure with steel roof over trailer
- Large 29-foot deck
- Eastern exposure with beautiful sunrise views
- Short walk to White Lake
- Access to a beautiful sandy beach
- Community docks
- Canoe and kayak storage racks
- Excellent swimming, boating, fishing, and paddling opportunities
- Approximately 25 minutes to Westport
- Turnkey seasonal getaway in a desirable lakeside community



# FLOOR PLAN



GROSS INTERNAL AREA  
EXCLUDED AREA  
DECK: 347 sq.ft, 32.27 m<sup>2</sup>  
TOTAL: 270 sq.ft, 25.08 m<sup>2</sup>

SIZES AND DIMENSIONS ARE APPROXIMATE, ACTUAL MAY VARY.

# AERIAL IMAGES



# INTERACTIVE LINKS

## Virtual Tour



Scan the QR Code or Visit:  
<https://my.matterport.com/show/?m=kxR6Sg4eggY>

## Video Tour



Scan the QR Code or Visit:  
<https://youtu.be/BEiUeFfvxWE>

## Google Map



Scan the QR Code or Visit:  
<https://maps.app.goo.gl/Ca2HucWyUff2T5REA>

## Panorama View



Scan the QR Code or Visit:  
<https://360panos.org/panos/9GlenfordLane33/>

# MLS LISTING



**9 Glenford Lane 33**  
**Frontenac Ontario K0H 1T0**  
 Frontenac 47 - Frontenac South Frontenac  
**SPIS: No**      **Taxes: \$0/2025**      **DOM: 0**

Mobile/Trailer      **Front On: W**  
**Link:**      **Acres:**  
 Bungalow      **Rms: 3**  
                                  **Bedrooms: 1**  
                                  **Washrooms: 1**  
                                  1x3xMain

**Lot: Irreg:**  
**Dir/Cross St:** White Lake Road / Glenford Lane  
**Directions:** HWY 38 North, East on White Lake Road, turn on Glenford Lane follow to lot #33

**MLS#:** X13444954      **PIN#:** 362430243  
**Possession Remarks:** TBD  
**Legal:** PT LT 12 CON 2 BEDFORD; PT RDAL BTN CON 2 AND CON 3 BEDFORD CLOSED BY FR423709, BEING PT 2, 13R6740, EXCEPT PTS 1-3, 13R13402, PT 1, 13R13403 & PT 1, 13R12617; SOUTH FRONTENAC

<p><b>Kitchens:</b> 1  <b>Fam Rm:</b> N  <b>Basement:</b> None  <b>Fireplace/Stv:</b> N  <b>Heat:</b> Forced Air / Propane  <b>A/C:</b> Other  <b>Central Vac:</b> No  <b>Apx Age:</b>  <b>Apx Sqft:</b> &lt; 700  <b>Roof:</b> Metal</p>	<p><b>Exterior:</b> Alum Siding  <b>Gar/Gar Spcs:</b> None / 0  <b>Drive:</b> Private Double  <b>Drive Park Spcs:</b> 3  <b>Tot Prk Spcs:</b> 3  <b>UFFI:</b>  <b>Pool:</b> None  <b>Energy Cert:</b>  <b>Cert Level:</b>  <b>GreenPIS:</b></p>	<p><b>Zoning:</b>  <b>Cable TV:</b> No  <b>Hydro:</b> Yes  <b>Gas:</b> No  <b>Phone:</b> No  <b>Water:</b> Well  <b>Water Supply Type:</b> Comm Well, Shared Well, Water System  <b>Sewer:</b> Other  <b>Spec Desig:</b> Unknown  <b>Farm/Agr:</b>  <b>Waterfront:</b> Indirect  <b>Retirement:</b>  <b>HST Applicable to:</b> Not Subject to HST  <b>Sale Price:</b>  <b>Oth Struct:</b> Garden Shed  <b>Survey Type:</b> None</p>
<p><b>Foundation:</b> Concrete Block, Other, Post &amp; Pad, Wood  <b>Assessment:</b>  <b>POTL:</b>  <b>POTL Mo Fee:</b>  <b>Elevator/Lift:</b>  <b>Laundry Lev:</b>  <b>Phys Hdcap-Eqp:</b></p>		
<p><b>Prop Feat:</b> Beach, Lake Access, Park, Waterfront, Wooded/Treed  <b>Exterior Feat:</b> Deck, Fishing, Seasonal Living  <b>Interior Feat:</b> Primary Bedroom - Main Floor, Water Heater Owned</p>		

<p><b>Water Body Name:</b> White Lake  <b>Water Body Type:</b> Lake  <b>Water Frontage (M):</b> 0  <b>Topography:</b> Hilly  <b>Water Features:</b> Beach Front, Boat Launch, Dock  <b>Access to Property:</b> Seasonal Private Road  <b>Docking Type:</b> Marina  <b>Water View:</b> Partially Obstructive  <b>WaterfrontYN:</b> Yes  <b>Waterfront:</b> Indirect</p>	<p><b>Shoreline:</b> Sandy  <b>Shoreline Allowance:</b> None  <b>Shoreline Exp:</b> E  <b>Alternative Power:</b> None  <b>Easements/Restrict:</b> Unknown  <b>Rural Services:</b> Cell Services, Electricity Connected, Garbage Pickup, Recycling Pickup  <b>Waterfront Accessory Bldgs:</b> Not Applicable  <b>Water Delivery Features:</b> Uv System, Water Treatmnt</p>
--	--

#	Room	Level	Length (ft)	Width (ft)	Description
1	Kitchen	Main	15.75	x10.5	Vinyl Floor Combined W/Living
2	Bathroom	Main	6.23	x4.27	Vinyl Floor 3 Pc Bath
3	Prim Bdrm	Main	10.5	x6.56	Broadloom

**Client Remks:** Welcome to your perfect getaway at Glenford Trailer Park on the beautiful shores of White Lake. This well-maintained Timberland RV Model 32RSL offers a comfortable and inviting seasonal retreat, ideal for relaxing weekends, family vacations, or an entire summer of lakeside living. The trailer is protected by a permanent structure built over top and features a durable steel roof, providing added comfort, protection, and peace of mind. A spacious 29-foot deck extends your living space outdoors, creating the perfect spot for entertaining guests, enjoying family meals, or simply relaxing with a morning coffee while taking in the peaceful surroundings. With direct eastern exposure, you'll be treated to stunning sunrise views each morning. The property is just a short walk from White Lake, where you can enjoy swimming, boating, fishing, and countless other recreational activities. The park features a beautiful sandy beach, community docks, and convenient canoe and kayak storage racks, making it easy to take full advantage of everything the lake has to offer. Glenford Trailer Park is known for its friendly atmosphere and exceptional waterfront amenities. Whether you enjoy paddling along the shoreline, casting a line from the dock, or spending the afternoon at the beach, this location offers something for everyone. When you're ready to explore beyond the lake, the charming village of Westport is only a scenic 25-minute drive to the east. Westport offers unique boutiques, waterfront dining, cafes, grocery stores, and local attractions, making it a wonderful destination for day trips and evenings out. Whether you're seeking a peaceful retreat, a family-friendly summer escape, or a place to create lasting memories near the water, this property offers an exceptional opportunity to enjoy the best of White Lake living.

**Inclusions:** All contents  
**Listing Contracted With:** ROYAL LEPAGE PROALLIANCE REALTY, BROKERAGE Ph: 613-273-9595



## Questions? Contact us:

**Tammy & Heath Gurr**

Royal LePage ProAlliance Realty, Brokerage



Westport Office:  
7 Spring Street, P.O. Box 148,  
Westport, ON K0G 1X0

[www.gurreathomes.com](http://www.gurreathomes.com)  
[info@gurreathomes.com](mailto:info@gurreathomes.com)  
(613) 273-9595

Kingston Office:  
640 Cataraqui Woods Drive  
Kingston, ON K7P 2Y5

*Your Total Real Estate Package!*