








*Wolfe Springs Resort: Where Your Vacation Home Dreams Come True*

**532 10th Concession Road Unit #9-8, Westport, ON**

-  **# X13080548**
-  **\$ \$47,500**
-  **2 Bedrooms**
-  **3 Bathrooms**
-  **3.83 Acres**
-  **Wolfe Lake**

**Welcome to Wolfe Springs Resort!**

Enjoy fractional ownership at this 4-season vacation property with the use of all the resort amenities and enjoyment of beautiful Wolfe Lake near Westport, Ontario. This two-storey, middle unit villa features 2 bedrooms, 3 bathrooms, large kitchen with granite countertops, stainless steel appliances, sunken living room with propane fireplace and views of the fairway. The master bedroom on the upper level is expansive and features a soaker tub and ensuite bath. The villa comes fully furnished and stocked with all you need to enjoy your 5 weeks at the lake including a washer and dryer tucked away in a hallway closet on the upper level.

*Your Total Real Estate Package!*

**Tammy & Heath Gurr**

Royal LePage ProAlliance Realty, Brokerage



[www.gurreathomes.com](http://www.gurreathomes.com)

[info@gurreathomes.com](mailto:info@gurreathomes.com)

**(613) 273-9595**



Not intended to solicit clients under contract. The trademarks REALTOR®, REALTORS® and the REALTOR® logo are controlled by The Canadian Real Estate Association (CREA) and identify real estate professionals who are members of CREA. Used under license. The trademarks MLS®, Multiple Listing Service® and the associated logos are owned by The Canadian Real Estate Association (CREA) and identify the quality of services provided by real estate professionals who are members of CREA. Used under license.



# *Table of Contents*

**532 10th Concession Road Unit #9-8  
(or Wolfe Springs Villa Unit #9-8)  
Westport, ON**

<b>Features</b>	<b>3</b>
<b>Floor Plan</b>	<b>4</b>
<b>Sitemap</b>	<b>6</b>
<b>Construction Features</b>	<b>7</b>
<b>Features &amp; Amenities</b>	<b>9</b>
<b>Interactive Links</b>	<b>10</b>
<b>MLS Listing</b>	<b>11</b>
<b>Contact Information</b>	<b>12</b>



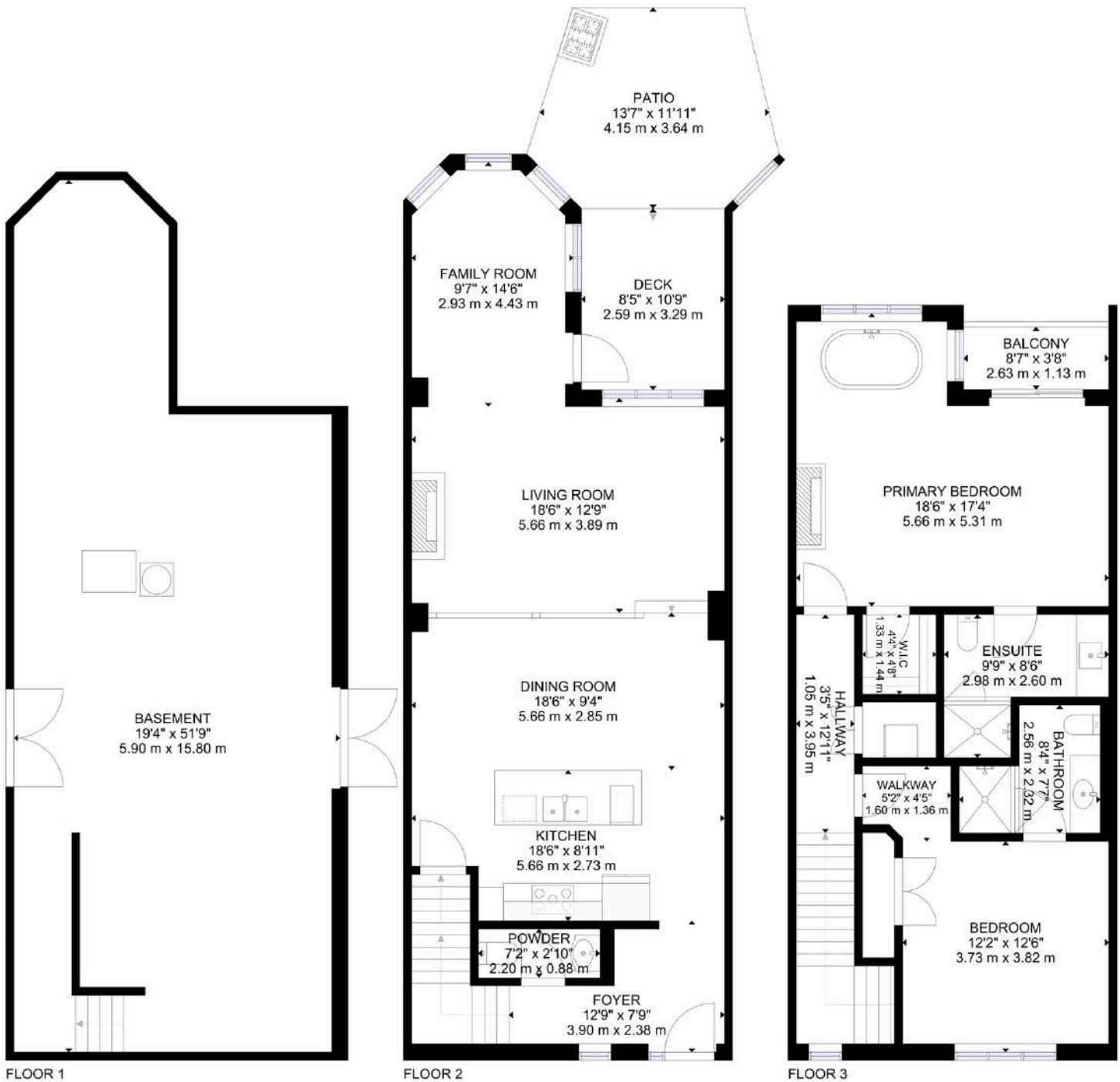
## Features

- Welcome to Wolfe Springs Resort!
- Enjoy fractional ownership at this 4-season vacation property with the use of all the resort amenities and enjoyment of beautiful Wolfe Lake near Westport, Ontario.
- This two-storey, middle unit villa features 2 bedrooms, 3 bathrooms, large kitchen with granite countertops, stainless steel appliances, sunken living room with propane fireplace and views of the fairway.
- The master bedroom on the upper level is expansive and features a soaker tub and ensuite bath.
- The villa comes fully furnished and stocked with all you need to enjoy your 5 weeks at the lake including a washer and dryer tucked away in a hallway closet on the upper level.
- Make use of the recreation room, theatre room, boat house, canoes, kayaks, paddle boats, bicycles, shared golf carts and barbeque and fire pit area.
- The waterfront is perfect for swimming or boating with a sandy beach and dock available.
- This unit has the desirable interval 8 as the fixed summer week of mid August each year.

## Directions

- West of Westport on Bedford Road to 10th Concession Road. Turn right (North) and follow signs.

# FLOOR PLAN



GROSS INTERNAL AREA  
 FLOOR 1: 855 sq.ft, 79 m<sup>2</sup>, FLOOR 2: 849 sq.ft, 79 m<sup>2</sup>, FLOOR 3: 769 sq.ft, 72 m<sup>2</sup>  
 EXCLUDED AREA: DECK: 92 sq.ft, 9 m<sup>2</sup>, PATIO: 147 sq.ft, 14 m<sup>2</sup>, BALCONY: 32 sq.ft, 3 m<sup>2</sup>  
 TOTAL: 2473 sq.ft, 230 m<sup>2</sup>

SIZES AND DIMENSIONS ARE APPROXIMATE, ACTUAL MAY VARY.

# FLOOR PLAN - ARTIST RENDER

## Fairway Villas



**Fairway Villas** ~ A total of 4 Villas comprise the Fairway residence, all are available at auction. These two storey, 1,900+ sq. ft. 2 bed, 2.5 bath Villas accommodate 8 overnight guests, overlook the Evergreen Golf Course and have unrestricted access to the waterfront.



# SITEMAP



# CONSTRUCTION FEATURES 1/2



## Lasting Value

Over time, Amvic ICF homes become stronger, sturdier and require much less repair and maintenance than conventionally built homes. As a result, they retain their value for a longer period of time. Amvic ICF homes are built to last and get stronger every day.

## Comfort

### **Sound Barrier**

Insulated concrete forms provide exceptional sound attenuation. While a wood framed house has a sound transmission class (STC) rating of 36-38, an Amvic ICFs home has an STC rating of 50+ which corresponds to a reduction in over two thirds of transmitted noise. With Amvic ICF, you will always enjoy peace and quiet in your home.

### **Superior Insulation**

Amvic ICF system replaces commonly used fibreglass insulation with expanded polystyrene (EPS). Traditional fibreglass insulation is a network of intertwined fibres which allows air to move through the gaps in the insulation. Amvic ICFs on the other hand consist of closed plastic cells that together with concrete walls prevent air movement creating an airtight seal around the entire perimeter of a building. Amvic ICF is the premium insulation choice for your long-term comfort.

### **High Indoor Air Quality**

The use of EPS insulation in Amvic ICF eliminates all air borne glass fibres and insulation settlement caused by fibreglass insulation. Also, the impermeable walls prevent the entry of dust, pollens and pollution. Amvic ICF homes provide the highest indoor air quality and qualify for Enviro-home status in Canada (the highest possible air quality rating given to an occupied shelter).

### **Superior Structure**

Unlike conventional homes where walls and floors loosen and shift over time creating warps and creaks, an Amvic ICF home will remain straight and quiet and make your home more comfortable.

## Sustainability

### **Fire Resistant**

Amvic ICFs are manufactured using only approved raw material bead with flame-retardant agents and have a 3+ hour fire rating. Consequently, Amvic ICF homes provide much greater fire resistance than traditional "stick built" homes, making your home safe for you and your family.

(cont'd on next page)

# CONSTRUCTION FEATURES 2/2

## **Wind and Storm Resistant**

Amvic ICFs are constructed with reinforced concrete, which tremendously increases strength and maximizes resistance to high winds and storms. In addition, drafts typically found where conventional floor joists rest on foundation walls, are considerably reduced due to the system's unique design.

## **Mould Resistant**

Traditional homes are constructed using organic materials such as wood, and are easily infiltrated by moisture which can result in the growth of mould and mildew. Amvic ICF homes virtually eliminate this problem since they are constructed using the highly effective combination of non organic materials, EPS and concrete.

## **Insect Prevention**

Since there is no food value for insects in the Amvic ICF system, the possibility of structural damage due to insects like termites is entirely eliminated. Also, insects cannot penetrate the concrete core of an Amvic ICF wall and therefore cannot enter your home.

## **Environmentally Friendly**

### **Reduced Emissions**

One of the major issues we are faced with today is global warming, which is negatively affecting the environment and weather patterns worldwide. Global warming is a direct result of harmful gas emissions into the earth's atmosphere. An Amvic ICF home reduces energy consumption on average by 30-50% monthly, which translates to an equivalent reduction in harmful emissions. Amvic products can generate as little as 1% construction thus, greatly reducing land filling which produces methane emissions. Furthermore, Amvic uses steam and cold water to produce ICFs. No CFC's, HCFC's, formaldehyde or any chemicals are used in Amvic's manufacturing process and no off-gassing is present.

### **Saves Trees**

Worldwide deforestation adds 1-2 billion metric tons of carbon to the atmosphere annually! In order to protect our atmosphere and ourselves, it is essential to reduce the number of trees we cut down. Every Amvic home saves several trees, which absorb carbon dioxide and give us oxygen. Do your part, build with Amvic ICF.

### **Recycled Materials**

Amvic ICF webs are manufactured using recycled polypropylene. This means that over 60% of the weight of an Amvic ICF block is comprised of recycled materials.



# FEATURES & AMENITIES



**Features** – The open concept floor plan of ALL Villas boasts the following;

- Approximately 1,900+ sq. ft.
- Hardwood floors in the living room and dining room
- Fully-equipped kitchen with custom wooden cabinetry
- Dishwasher, microwave, stove, side-by-side refrigerator, laundry
- Quarry tile floors in the kitchen, hallway and bathrooms
- 42 inch plasma TVs in living room and master bedroom
- Satellite TV and high speed wifi
- Gas fireplaces in living room and master bedroom
- King sized bed, walk-in closet and soaker tub in master bedroom
- Professionally decorated with premium furnishings
- Towels and bedding supplied
- Four season forced-air heating and cooling
- Energy efficient windows
- 5/8 inch drywall on ceilings
- Propane barbeque & wine fridge
- Porch, deck and master bedroom balcony
- Premium Amvic ICF construction

**On-Site Amenities** – Wolfe Springs Resort is set on 3.41 acres and offers 335 ft. of pristine waterfront with sand beach and boat docking. With every interval, you will get an undivided share of the entire property. The following amenities will be yours to use at no additional cost:

- Wolfe Springs Resort is pet free
- Welcome Centre with internet access and fitness equipment
- Golf carts, kayaks and canoes
- Bocce ball, horseshoes and croquet
- Outdoor fireplace and BBQ area
- Ice-skating rink on the lake
- Theatre room
- Games room
- Sand beach
- Snowshoes

As well, Evergreen Golf Course is located directly behind the resort. It is one of Eastern Ontario's finest 9-hole (par 36) golf courses and is open daily from mid-April to October. Be sure to take a golf cart to the fully-licensed clubhouse when you feel like taking a break from your gourmet kitchen.



#29 10th Concession Road, Westport, ON K0G 1X0

# INTERACTIVE LINKS

## Virtual Tour



Scan the QR Code or Visit:  
<https://my.matterport.com/show/?m=DjacyAMTgDH>

## Video Tour



Scan the QR Code or Visit:  
<https://youtu.be/NuPurjvd6OQ>

## Google Map



Scan the QR Code or Visit:  
<https://maps.app.goo.gl/sgWCPCAVLeH7LvDX7>

## Panorama View



Scan the QR Code or Visit:  
<https://360panos.org/panos/WolfeLakeResort2story3/>

# MLS LISTING



**532 10th Concession Rd 9-8** **List: \$47,500 For: Sale**  
**Westport** Ontario K0G 1X0  
 Westport 815 - Westport Leeds and Grenville  
**SPIS:** No **Taxes:** \$0/2025 **DOM:** 0  
 Co-Ownership Apt 2-Storey **Rms:** 8  
**Corp#:** N/A / 0 **#Shares%:** 1 **Bedrooms:** 2  
**Unit#:** 9-8 **Locker#:** **Washrooms:** 3  
**Locker Lev Unit:** 1x4x2nd, 1x2xMain, 1x4x2nd  
**Locker Unit#:**  
**Level:** 2  
**Zoning:** A-RW  
**Prop Mgmt:** WOLFE SPRINGS RESORT OWNER'S ASSOCIATION  
**Dir/Cross St:** Bedford Road and 10th Concession Road  
**Directions:** West of Westport on Bedford Road to 10th Concession Road.

**MLS#:** X13080548 **Possession Remarks:** TBD  
**Status Cert:** N **Bldg Name:** **PIN#:** 442600122  
**Assignment:** No **Fractional Ownership:** Yes

<b>Kitchens:</b> 1 <b>Fam Rm:</b> N <b>Basement:</b> None <b>Fireplace/Stv:</b> Y <b>Heat:</b> Forced Air / Propane <b>Apx Age:</b> <b>Apx Sqft:</b> 1800-1999 <b>Lot Shape:</b> Irregular <b>Lot Size Source:</b> GeoWarehouse <b>Roof:</b> Fibreglass Shingle <b>Foundation:</b> Insulated Concrete Form <b>Sqft Source:</b> Wolfe springs resort documents <b>Exposure:</b> Nw <b>Assessment:</b> <b>Spec Desig:</b> Unknown <b>Survey Type:</b> None <b>Phys Hdp-Eqp:</b>	<b>Pets Perm:</b> <b>Locker:</b> None <b>Maint:</b> \$4,421 <b>A/C:</b> Central Air <b>Central Vac:</b> No <b>UFFI:</b> <b>Elev/Lift:</b> <b>Accessibility:</b> None <b>Feat:</b> <b>HST Applicable to:</b> Not Subject to HST <b>Sale Price:</b> <b>Taxes Incl:</b> <b>YWater Incl:</b> Y <b>Heat Incl:</b> <b>YHydro Incl:</b> Y <b>Cable TV Incl:</b> <b>CAC Incl:</b> <b>Bldg Ins Incl:</b> <b>Prkg Incl:</b> <b>Com Elem Incl:</b> <b>Cert Level:</b> <b>Energy Cert:</b> <b>GreenPIS:</b>	<b>Balcony:</b> Open <b>Ens Lndry:</b> Y <b>Lndy Lev:</b> Upper <b>Exterior:</b> Board/Batten / Stone <b>Gar/Gar Spcs:</b> None / 0 <b>Drive:</b> None <b>Park Type:</b> Common <b>Park/Drv Spcs:</b> 2 <b>Tot Prk Spcs:</b> 2 <b>Park \$/Mo:</b> <b>Prk Lvl/Unit:</b> <b>Bldg Amen:</b> Media Room, Party/Meeting Room, Recreation Room, Shared Beach, Shared Dock <b>Prop Feat:</b> Beach, Ensuite Laundry, Fireplace/Stove, Golf, Grnbelt/Conserv, Lake/Pond, Level, Park, Waterfront <b>Exterior Feat:</b> Backs On Green Belt, Built-In-BBQ, Deck, Fishing, Landscape Lighting, Landscaped, Patio, Recreational Area <b>Interior Feat:</b> Air Exchanger, Bar Fridge, On Demand Water Heater, Water Heater Owned, Water Treatment <b>Security Feat:</b> Carbon Monoxide Detectors, Smoke Detector
--	---	--

<b>Water Body Name:</b> Wolfe Lake <b>Water Body Type:</b> Lake <b>Water Frontage (M):</b> 102 <b>Topography:</b> Level, Wooded/Treed <b>Water Features:</b> Beach Front, Dock <b>Access to Property:</b> Municipal Road, Private Road, Year Round Municipal Road <b>Docking Type:</b> Private <b>Water View:</b> Direct <b>WaterfrontYN:</b> Yes <b>Waterfront:</b> Direct	<b>Shoreline:</b> Clean, Shallow, Rocky <b>Shoreline Allowance:</b> None <b>Shoreline Exp:</b> NW <b>Alternative Power:</b> None <b>Easements/Restrict:</b> Unknown <b>Rural Services:</b> Cable Available, Cell Services, Electricity Connected, Garbage Pickup, Internet High Speed, Recycling Pickup, Telephone Available <b>Waterfront Accessory Bldgs:</b> Not Applicable
--	--

#	Room	Level	Length (ft)	Width (ft)	Description
1	Living	2 Main	12.24	x 18.47	
	Kitchen	3 Main	18.57 7.87	x 18.14	
	Bathroom	4 2nd	7.87 12.14	x 3.28	4 Pc Ensuite
	Bathroom	5 Br Main	16.99 7.97	x 2.95	2 Pc Bath
	6 Br	7 2nd	14.3	x 12.4	
	Bathroom	8 2nd		x 18.31	4 Pc Bath
	Den	2nd		x 2.99	4 Pc Bath
		2nd		x 8.99	

**Client Remks:**  
 Welcome to Wolfe Springs Resort! Enjoy fractional ownership at this 4-season vacation property with the use of all the resort amenities and enjoyment of beautiful Wolfe Lake near Westport, Ontario. This two-storey, waterview villa features 2 bedrooms, 3 bathrooms, large kitchen with granite countertops, stainless steel appliances, sunken living room with propane fireplace and beautiful views of Wolfe Lake. The master bedroom on the upper level is expansive and features a soaker tub and ensuite bath. The villa comes fully furnished and stocked with all you need to enjoy your 5 weeks at the lake including a washer and dryer tucked away in a hallway closet on the upper level. Make use of the recreation room, theatre room, boat house, canoes, kayaks, paddle boats, bicycles, shared golf carts and barbecue and fire pit area. The waterfront is perfect for swimming or boating with a sandy beach and dock available. This unit has the desirable interval 8 as the fixed summer week of mid August each year.

**Inclusions:** Built-In Microwave, dishwasher, dryer, refrigerator, satellite dish, stove, washer, wine cooler, window coverings  
**Listing Contracted With:** ROYAL LEPAGE PROALLIANCE REALTY, BROKERAGE **Ph:** 613-273-9595



## Questions? Contact us:

**Tammy & Heath Gurr**

Royal LePage ProAlliance Realty, Brokerage



Westport Office:  
7 Spring Street, P.O. Box 148,  
Westport, ON K0G 1X0

[www.gurreathomes.com](http://www.gurreathomes.com)  
[info@gurreathomes.com](mailto:info@gurreathomes.com)  
(613) 273-9595

Kingston Office:  
640 Cataraqui Woods Drive  
Kingston, ON K7P 2Y5

*Your Total Real Estate Package!*