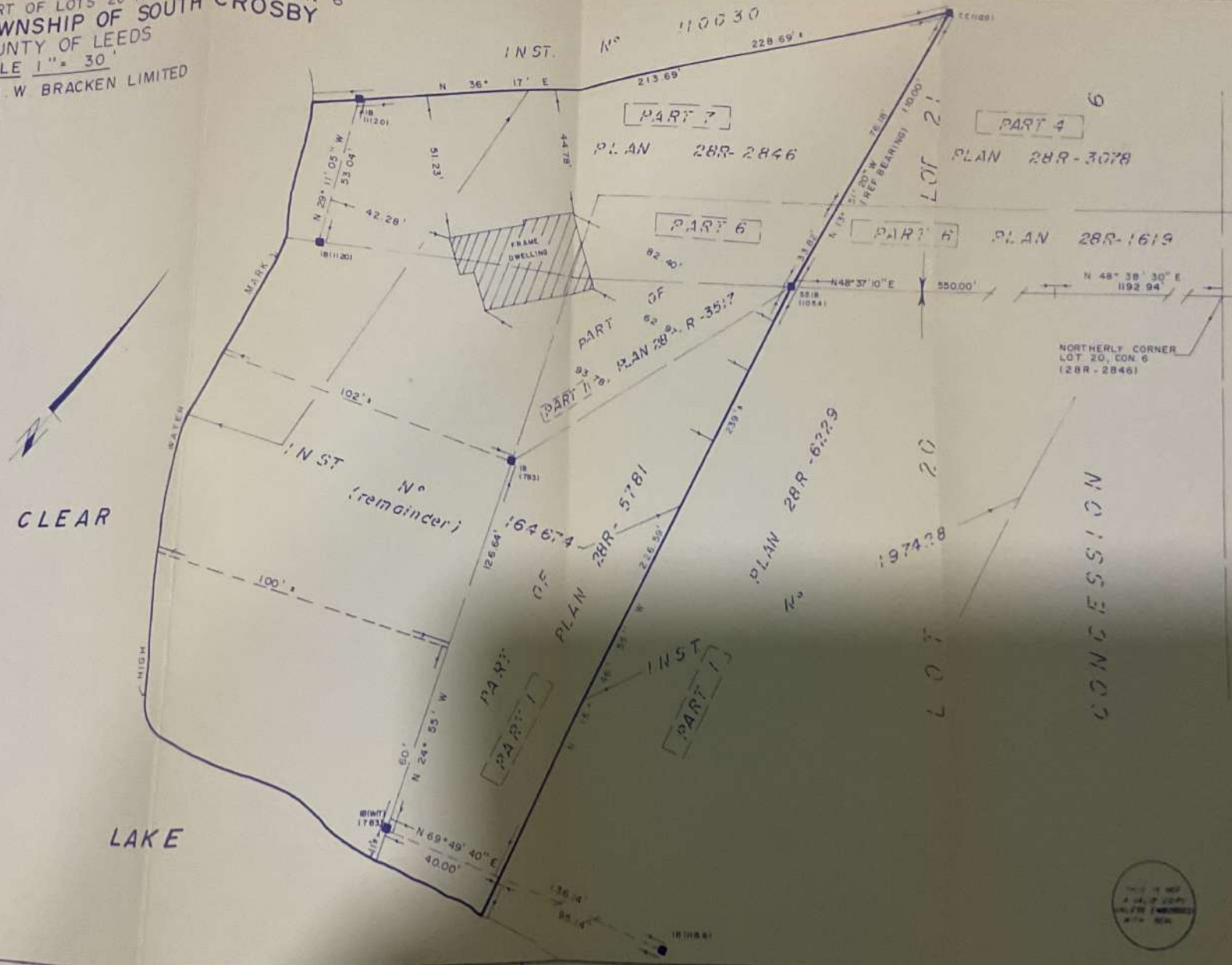


BUILDING LOCATION SURVEY OF
 PART OF LOTS 20 AND 21, CONCESSION 6
 TOWNSHIP OF SOUTH CROSBY
 COUNTY OF LEEDS
 SCALE 1" = 30'
 GEO. W. BRACKEN LIMITED
 1989



CLEAR

LAKE

NORTHERLY CORNER
 LOT 20, CON. 6
 (28R-2846)

CONCESSION

© Geo. W. Bracken Limited
 1989
 NO PERSON MAY COPY, REPRODUCE, DISTRIBUTE OR ALTER THIS
 PLAN IN WHOLE OR IN PART WITHOUT THE WRITTEN PERMISSION OF
 GEO. W. BRACKEN LIMITED.
 NOTES
 BEARINGS ARE ASTRAUC

LEGEND	
○	DENOTES SURVEY MONUMENT FOUND
●	DENOTES SURVEY MONUMENT SET
SB	DENOTES STANDARD IRON BAR
SB	DENOTES SHORT STANDARD IRON BAR
IB	DENOTES IRON BAR
CC	DENOTES CUT CROSS
WT	DENOTES WITNESS
SA	DENOTES SOURCE UNKNOWN
ACC	DENOTES ACCEPTED
UN	DENOTES UNMEASURED

SURVEYORS CERTIFICATE
 I CERTIFY THAT
 THE FIELD SURVEY REPRESENTED ON THIS PLAN WAS
 COMPLETED ON THE 31ST DAY OF AUGUST 1989
 August 4th 1989 *Geo. W. Bracken*

THIS IS NOT
 A VALID COPY
 UNLESS SIGNED
 WITH SEAL

GEO. W. BRACKEN LIMITED
 ONTARIO LAND SURVEYORS
 40 MAIN STREET, WEST SMITH FALLS, ONTARIO
 K7A 4S7 (519) 281-2252