

PLAN of SURVEY of
 PART of LOTS 22 & 23, CONCESSION 7
 Geographic Township of Loughborough
 TOWNSHIP of SOUTH FRONTENAC
 COUNTY of FRONTENAC

SCALE = 1:1500



HOPKINS CHITTY LAND SURVEYORS INC.
 -2017-



I REQUIRE THIS PLAN TO BE
 DEPOSITED UNDER THE
 LAND TITLES ACT

PLAN 13R-21513

RECEIVED AND DEPOSITED

DATE MARCH 27, 2017

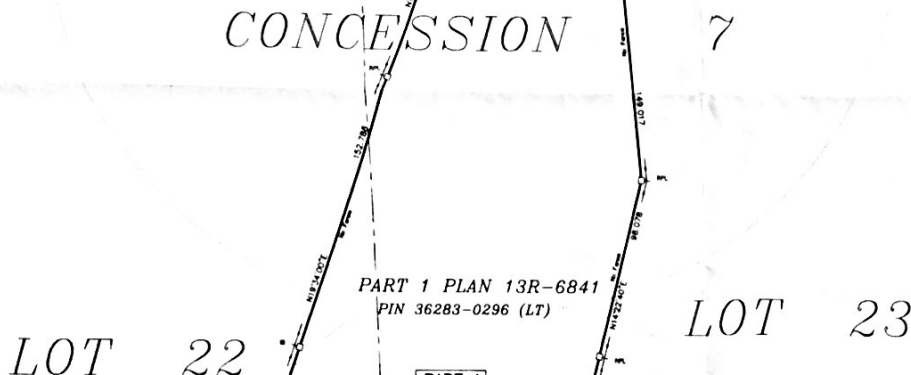
DATE March 30, 2017

Marcus Lunge
 SIGNATURE

PHIL W. CHITTY
 ONTARIO LAND SURVEYOR

REPRESENTATIVE FOR THE
 LAND REGISTRY FOR THE
 LAND TITLES DIVISION OF
 FRONTENAC (No. 13)

SCHEDULE			
PART	PART of LOT	CON	PART of PIN No
1	22 & 23	7	36283-0296 (LT)



OBSERVED REFERENCE POINTS (ORP'S) DERIVED FROM GPS OBSERVATION USING PRECISE POINT POSITIONING (PPP) SERVICE UTM ZONE 18 NORTH (CRS) (1987)			
COORDINATES TO RURAL ACCURACY PER SEC 14(8) OF O REG 216/10			
POINT ID	NORTHING	EASTING	
ORP A	4921386.65	384049.08	
ORP B	4921496.51	384345.17	

COORDINATES CANNOT IN THEMSELVES BE USED TO
 RE-ESTABLISH CORNERS OR BOUNDARIES SHOWN ON THIS PLAN

BEARINGS ARE UTM GRID DERIVED FROM MULTIPLE REAL TIME KINETIC
 (RTK) OBSERVATIONS FROM MONUMENT "A" TO "B" UTM ZONE 18
 (75° WEST LONGITUDE) WAD83 (CRS) (1987)

FOR BEARING COMPARISONS A ROTATION OF 0°17'30" CLOCKWISE WAS
 APPLIED TO BEARINGS ON 13R-15583 & 13R-15090

DISTANCES ARE GROUND AND CAN BE CONVERTED TO GRID BY
 MULTIPLYING BY THE COMBINED SCALE FACTOR OF 0.9994987

DISTANCES AND COORDINATES SHOWN ON THIS PLAN ARE IN METRES
 AND CAN BE CONVERTED TO FEET BY DIVIDING BY 0.3048

LEGEND:

- SSIB'S PLANTED DUE TO INSUFFICIENT OVERBURDEN
- denotes Planted Survey Monument
 - denotes Found Survey Monument
 - SIB Standard Iron Bar
 - SSIB Short Standard Iron Bar
 - IB Iron Bar
 - IBR Iron Bar (round)
 - RB Rock Bar
 - RP Rock Post
 - (BT) Witness
 - (M) Measured
 - (RP) Registered Plan
 - (HP) Hydro Pole
 - (H&B) Humphries & Burgham Ltd.-O.L.S.
 - (1407) Orange W. Elliott Ltd.-O.L.S.
 - (P) Plan 13R-15090

SURVEYOR'S CERTIFICATE:

I CERTIFY THAT
 1 This Survey and Plan are correct and in accordance
 with the SURVEY ACT and the REGULATIONS ACT and the
 LAND TITLES ACT and the REGULATIONS made under them.
 2 The SURVEY was completed on the 27th day of
 MARCH, 2017

HOPKINS CHITTY LAND SURVEYORS INC.
 DATE MARCH 27, 2017
 PHIL W. CHITTY O.L.S.



Party Check: []	Instrument: []	Checked By: []	Plan By: []
HOPKINS CHITTY LAND SURVEYORS INC. Ontario Land Surveyors www.hopkinschitty.com			
654-636 MORRIS COURT KINGSTON, ONTARIO K7P 2R9 Tel: (613) 384-9266 Fax: (613) 384-5513	PROJECT No. 2016-314 LOT 22 & 23, CONCESSION 7 TOWNSHIP OF LOUGHBOROUGH		