

*1 Acre Lot For Sale  
Close to Westport!*



## PT 4 McAndrews Road, Westport, ON

**This beautiful lot has approximately 200 feet of road frontage on the south side of McAndrews Road West and has an acre of land with fencing along the rear lot line.**

It is on a township-maintained gravel road and is located only a short distance from Perth Road. It is just a quick trip for groceries into the beautiful Village of Westport or south to Kingston for bigger box stores. This lot is one of four lots available for sale and may be the site for your new country home that located a short distance from many lakes, trails for hiking and truly an amazing part of Ontario.

# X12008680

\$ \$169,888

1.01 Acres

*Your Total Real Estate Package!*

**Tammy & Heath Gurr**

Royal LePage ProAlliance Realty, Brokerage



[www.gurreathomes.com](http://www.gurreathomes.com)



[info@gurreathomes.com](mailto:info@gurreathomes.com)

**(613) 273-9595**



Not intended to solicit clients under contract. The trademarks REALTOR®, REALTORS® and the REALTOR® logo are controlled by The Canadian Real Estate Association (CREA) and identify real estate professionals who are members of CREA. Used under license. The trademarks MLS®, Multiple Listing Service® and the associated logos are owned by The Canadian Real Estate Association (CREA) and identify the quality of services provided by real estate professionals who are members of CREA. Used under license.



An aerial photograph showing a dirt road winding through a forest with green and yellow trees. The image is partially obscured by a white circular graphic containing the title and address.

# *Table of Contents*

**PT 4 McAndrews Road  
Westport, ON**

Features	3
Survey	4
Aerial Images	5
Interactive Links	6
MLS Listing	7
Contact Information	8





## Features

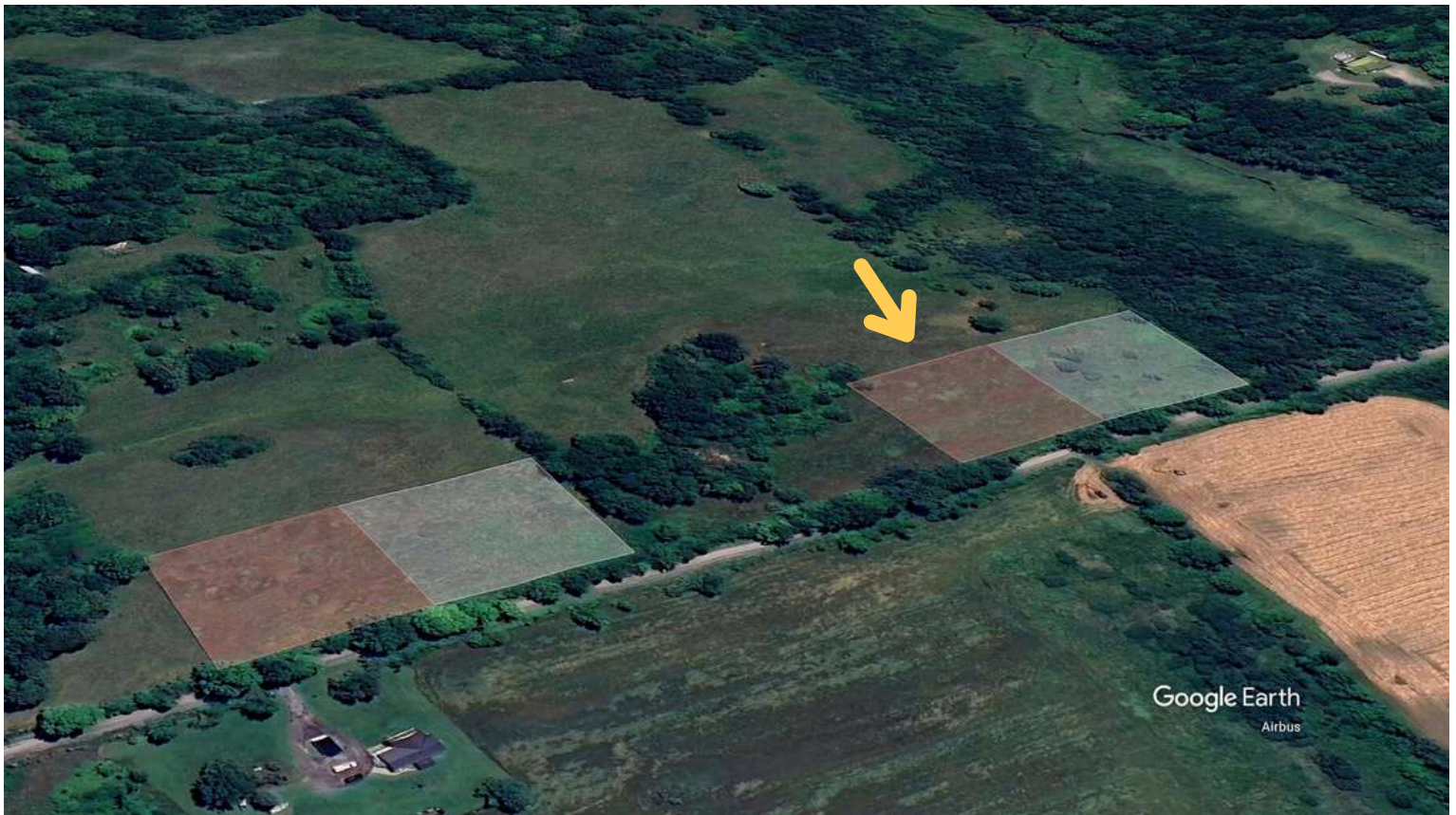
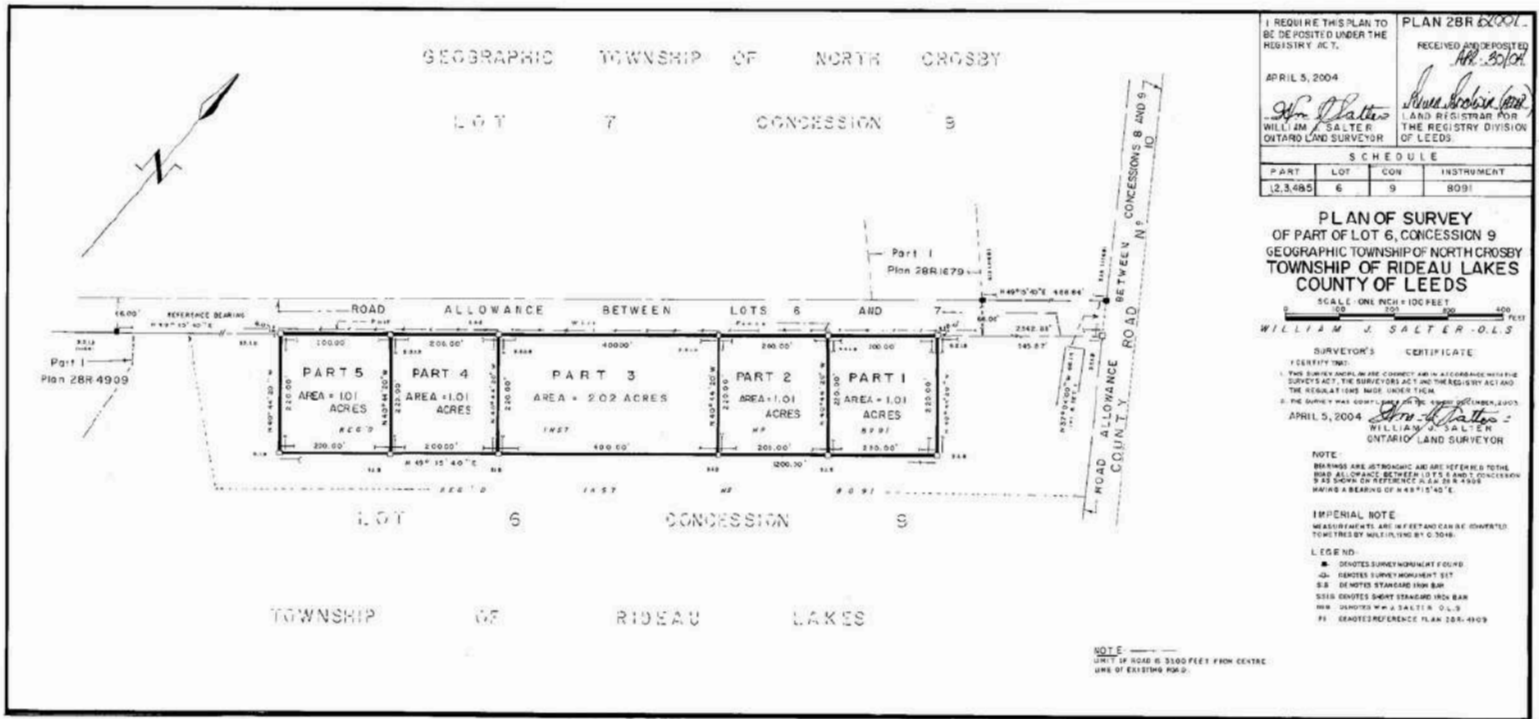
- This beautiful lot has approximately 200 feet of road frontage on the south side of McAndrews Road West and has an acre of land with fencing along the rear lot line.
- It is on a township-maintained gravel road and is located only a short distance from Perth Road.
- It is just a quick trip for groceries into the beautiful Village of Westport or south to Kingston for bigger box stores.
- This lot is one of four lots available for sale and may be the site for your new country home that located a short distance from many lakes, trails for hiking and truly an amazing part of Ontario.

## Directions

- Perth Road to McAndrews Road. Turn west on McAndrews Road and follow to signs.



# SURVEY





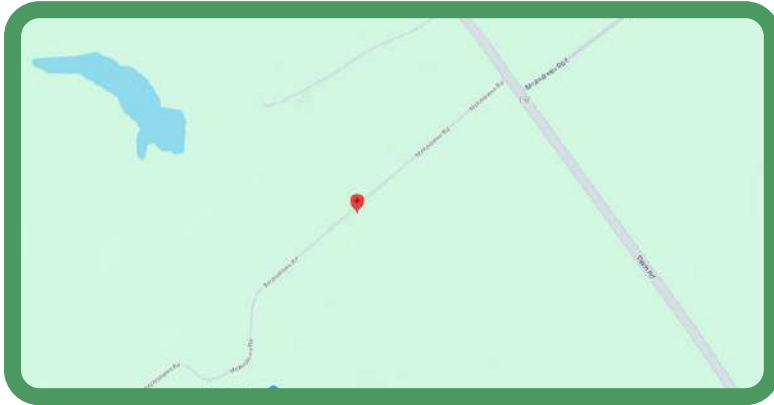
# AERIAL IMAGES





# INTERACTIVE LINKS

## Google Maps



Scan the QR Code or Visit:

<https://maps.app.goo.gl/xjjUcEydurDQxniB6>

## Video Tour



Scan the QR Code or Visit:

<https://youtu.be/EPQDTyoWPY0>


## Panorama



Scan the QR Code or Visit:

<https://360panos.org/panos/McAndrewsRdLots1/>

# MLS LISTING

	<b>PT 4 McAndrews Rd</b> <b>Rideau Lakes Ontario K0G 1X0</b> Rideau Lakes 816 - Rideau Lakes (North Crosby) Twp Leeds and Grenville <b>SPIS: N      Taxes: \$7.79/2024      DOM: 1</b>		<b>List: \$169,888 For: Sale</b>		
	<b>Vacant Land</b> <b>Link:</b>  <b>Lot: 200 x 220 Feet Irreg:</b> <b>Dir/Cross St: Perth Road</b>	<b>Front On: E</b> <b>Acre: .50-1.99</b>	<b>Rms:</b> <b>Bedrooms: 0</b> <b>Washrooms: 0</b>		
	<b>MLS#: X12008680      PIN#: 441050074</b> <b>Possession Remarks: TBD</b>				
<b>Kitchens:</b> <b>Fam Rm:</b> <b>Basement:</b> <b>Fireplace/Stv:</b> <b>Heat:</b> <b>A/C:</b> <b>Central Vac:</b> N <b>Apx Age:</b> <b>Apx Sqft:</b> <b>Assessment:</b> <b>POTL:</b> <b>POTL Mo Fee:</b> <b>Elevator/Lift:</b> <b>Laundry Lev:</b> <b>Phys Hdcap-Eqp:</b>	<b>Exterior:</b> <b>Drive:</b> <b>Gar/Gar Spcs:</b> <b>Drive Park Spcs:</b> <b>Tot Prk Spcs:</b> <b>UFFI:</b> <b>Pool:</b> <b>Energy Cert:</b> <b>Cert Level:</b> <b>GreenPIS:</b> <b>Prop Feat:</b> Level	<b>Zoning:</b> <b>Cable TV:</b> N <b>Hydro:</b> N <b>Gas:</b> N <b>Phone:</b> N <b>Water:</b> None <b>Water Supply:</b> <b>Sewer:</b> None <b>Spec Desig:</b> Unknown <b>Farm/Agr:</b> <b>Waterfront:</b> None <b>Retirement:</b> <b>Oth Struct:</b>			
<b>Access to Property:</b> Year Round Municipal Road		<b>Rural Services:</b> Electricity On Road			
<b>Waterfront:</b> None					
<b>#</b>	<b>Room</b>	<b>Level</b>	<b>Length (ft)</b>	<b>Width (ft)</b>	<b>Description</b>
<b>Client Remks:</b> This beautiful lot has approximately 200 feet of road frontage on the south side of McAndrews Road West and has an acre of land with fencing along the rear lot line. It is on a township-maintained gravel road and is located only a short distance from Perth Road. It is just a quick trip for groceries into the beautiful Village of Westport or south to Kingston for bigger box stores. This lot is one of four lots available for sale and may be the site for your new country home that located a short distance from many lakes, trails for hiking and truly an amazing part of Ontario.					
<b>Extras:</b>					
<b>Listing Contracted With:</b> ROYAL LEPAGE PROALLIANCE REALTY, BROKERAGE <b>Ph:</b> 613-273-9595					





## Questions? Contact us:

**Tammy & Heath Gurr**

Royal LePage ProAlliance Realty, Brokerage



Westport Office:  
7 Spring Street, P.O. Box 148,  
Westport, ON K0G 1X0

[www.gurreathomes.com](http://www.gurreathomes.com)  
[info@gurreathomes.com](mailto:info@gurreathomes.com)  
(613) 273-9595

Kingston Office:  
640 Cataraqui Woods Drive  
Kingston, ON K7P 2Y5

*Your Total Real Estate Package!*