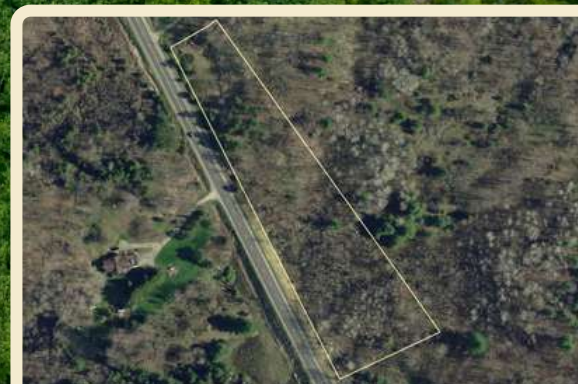




*Vacant Land Just
Outside of Westport*



PT LT 4-5 Perth Road, Westport, ON

X12442509

\$ \$109,900

↔ 3.40 Acres

Vacant land parcel on the east side of Perth Road, just south of Westport.

The lot is heavily treed, has approximately 821 feet of road frontage and is just under 3.5 acres in size. Easy access right off the main road and great location just minutes from the Village of Westport or 35–40 minutes to Kingston.

Your Total Real Estate Package!

Tammy & Heath Gurr

Royal LePage ProAlliance Realty, Brokerage



www.gurreathomes.com



info@gurreathomes.com

(613) 273-9595



Not intended to solicit clients under contract. The trademarks REALTOR®, REALTORS® and the REALTOR® logo are controlled by The Canadian Real Estate Association (CREA) and identify real estate professionals who are members of CREA. Used under license. The trademarks MLS®, Multiple Listing Service® and the associated logos are owned by The Canadian Real Estate Association (CREA) and identify the quality of services provided by real estate professionals who are members of CREA. Used under license.