



## LOT 2 Kismet Lane, South Frontenac, ON

Kismet is a large, picturesque and serene retreat located on the Frontenac Arch between Perth Road (Division Street) and the North Basin of Buck Lake, 28 kms. north of Highway 401 in Kingston.

Kismet is comprised of 3 adjoining, but legally separate, parcels of land comprising over 200 acres of dramatic Canadian Shield with over 6000 of lakefront facing and abutting Frontenac Park which is a forever wild 52 square kilometer provincial "near wilderness" park. Together, Kismet and the Park occupy the entire south end of the lake thereby ensuring a glorious and peaceful, westerly, wilderness view from the entire Kismet property in perpetuity. A unique and incalculable bonus for purchasers - all 3 parcels are accessed from Perth Road by Kismet Lane, a private road restricted for use by the purchasers and their guests only!

# X12283711

\$ \$950,000

 Buck Lake

 85.63 Acres

*Your Total Real Estate Package!*

**Tammy & Heath Gurr**

Royal LePage ProAlliance Realty, Brokerage



[www.gurreathomes.com](http://www.gurreathomes.com)



[info@gurreathomes.com](mailto:info@gurreathomes.com)

**(613) 273-9595**



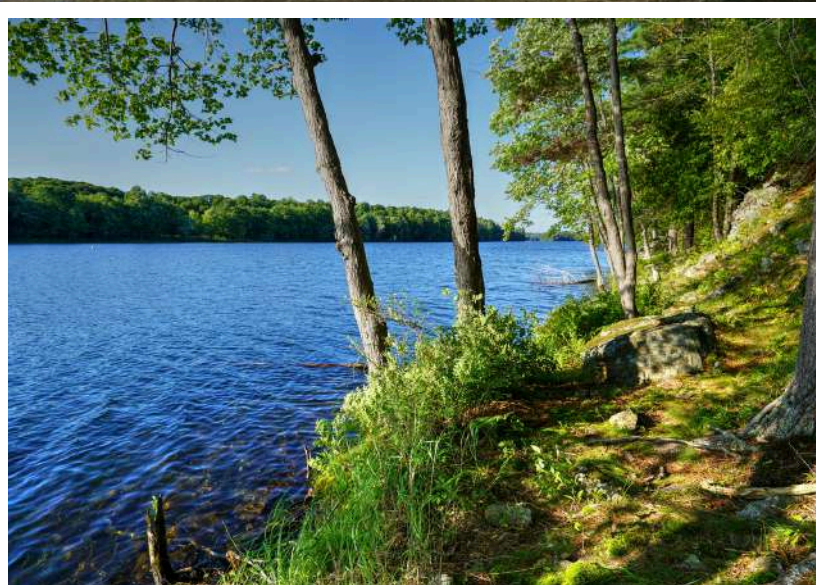
Not intended to solicit clients under contract. The trademarks REALTOR®, REALTORS® and the REALTOR® logo are controlled by The Canadian Real Estate Association (CREA) and identify real estate professionals who are members of CREA. Used under license. The trademarks MLS®, Multiple Listing Service® and the associated logos are owned by The Canadian Real Estate Association (CREA) and identify the quality of services provided by real estate professionals who are members of CREA. Used under license.

# *Table of Contents*

**LOT 2 Kismet Lane  
South Frontenac, ON**

Features	3
More Information	4
Survey	5
Interactive Links	6
MLS Listing	7
Contact Information	8





## Features

Kismet is a large, picturesque and serene retreat located on the Frontenac Arch between Perth Road (Division Street) and the North Basin of Buck Lake, 28 kms. north of Highway 401 in Kingston.

- Kismet is comprised of 3 adjoining, but legally separate, parcels of land comprising over 200 acres of dramatic Canadian Shield with over 6000 of lakefront facing and abutting Frontenac Park which is a forever wild 52 square kilometer provincial "near wilderness" park. Together, Kismet and the Park occupy the entire south end of the lake thereby ensuring a glorious and peaceful, westerly, wilderness view from the entire Kismet property in perpetuity.
- A unique and incalculable bonus for purchasers - all 3 parcels are accessed from Perth Road by Kismet Lane, a private road restricted for use by the purchasers and their guests only!
- The Vendor will provide hydro service to all 3 lots at the Vendor's expense.
- The Purchasers will be able to enjoy all 48 kilometers of Buck Lake waterfront by boat but there is no access to or from the Rideau Canal thereby contributing further to the tranquility of Kismet.
- Easy access to Kingston, one of Ontario's oldest and most charming cities, with all of the character, services, and benefits which it has to offer including the St. Lawrence Seaway, the Thousand Islands, Queen's University, and regional health care services. Only 2.5 hours from each of Toronto and Montreal, and 1.5 hours from Ottawa.

## Directions

- Perth Road to Kismet Lane. Follow to the 3 Kismet Lots turning left at the 'Y'.



# MORE INFORMATION

## Kismet Lane Parcels 1, 2, 3 Information

Parcel 1: 2746.53' of lakefront; 85.63 acres

Parcel 2: 621.13 of lakefront; 85.26 acres

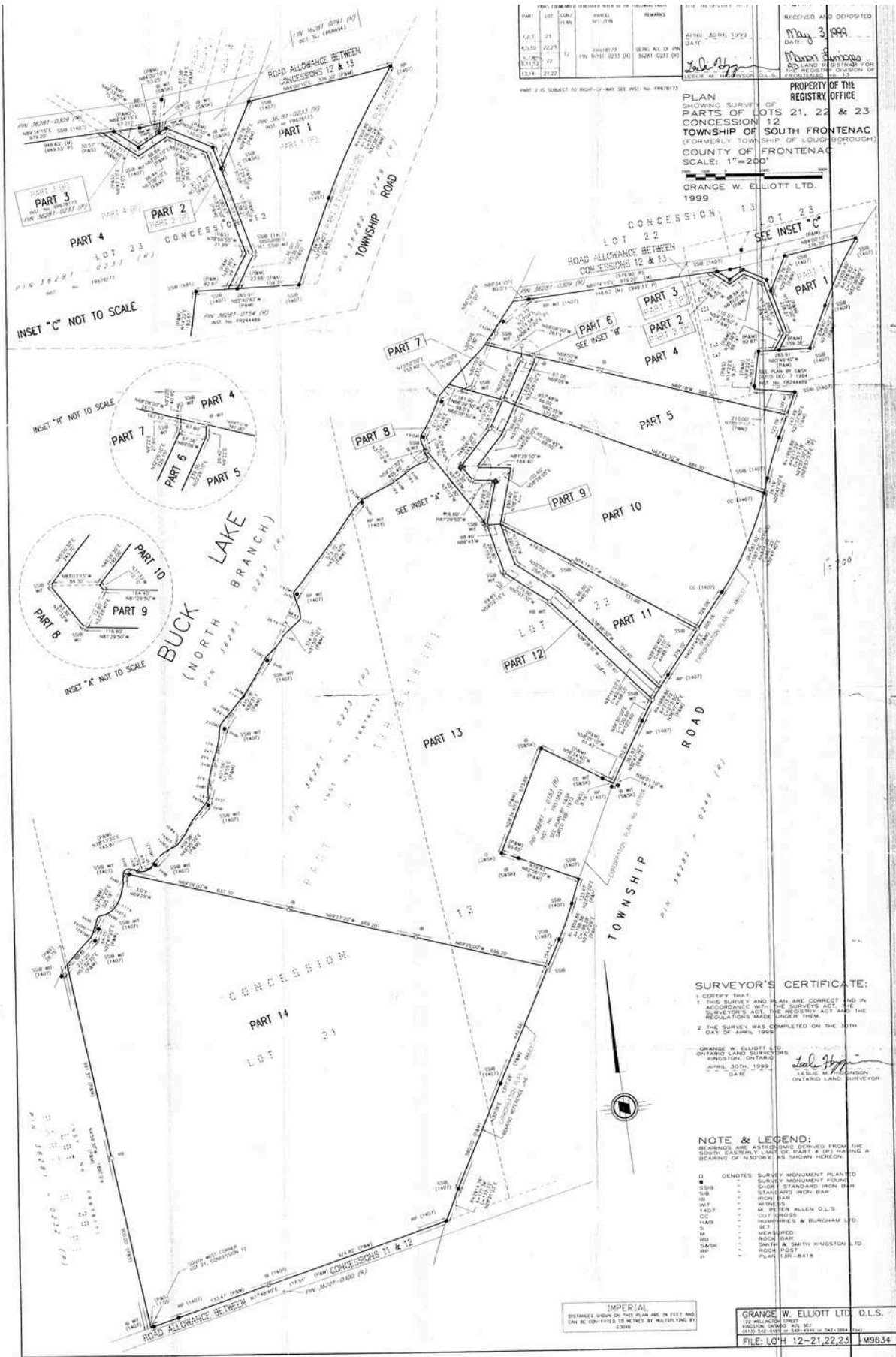
Parcel 3: 2727.13 of lakefront; 48 acres

All Parcels are accessed from Perth Road by Kismet Lane, which is a private road with access restricted to owners. Kismet Lane will be upgraded to current municipal standards and shared by Kismet owners pursuant to a condominium road agreement or reciprocal easement agreements to provide Kismet owners with access to their properties and to the lake at a boat launch facility to be constructed by the vendor at its cost for private launching and removal of their boats on a restricted basis. Hydro will be extended along the full length of Kismet Lane at the Vendor's expense.

VENDOR IS ALSO OPEN TO DISCUSSION OF JOINT VENTURE OR DEVELOPMENT PROPOSALS WHICH MIGHT INCLUDE SALE OF ONE OR MORE LOTS WITH FRONTAGE OF 300' OR MORE AT A PRICE TO BE NEGOTIATED. WELCOME TO KISMET!



# SURVEY





# INTERACTIVE LINKS

## Google Map



Scan the QR Code or Visit:  
<https://goo.gl/maps/3ZDxDGiyiJdWEJQQ9>

## Video Tour



Scan the QR Code or Visit:  
<https://youtu.be/DZdUdlzKGgY>

## Link to Lot 1




Scan the QR Code or Visit:  
<https://gurreathomes.com/listings/lot-1-kismet-lane.html/>

## Link to Lot 3



Scan the QR Code or Visit:  
<https://gurreathomes.com/listings/lot-3-kismet-lane.html/>

# MLS LISTING

	<b>LOT 2 KISMET Lane</b> <b>Frontenac Ontario K0H 2L0</b> Frontenac 47 - Frontenac South Frontenac <b>SPIS:</b> N <b>Taxes:</b> \$3,158.24/2024 <b>DOM:</b> 0													
	<b>Vacant Land</b> <b>Link:</b> <b>Lot:</b> 598 x 1896 Feet Irreg:	<b>Front On:</b> W <b>Acre:</b> 50-99.99 <b>Rms:</b> <b>Bedrooms:</b> 0 <b>Washrooms:</b> 0												
	<b>Dir/Cross St:</b> Perth Road & Kismet Lane <b>Directions:</b> Perth Road to Kismet Lane. Follow to second sign.													
<b>MLS#:</b> X12283711 <b>PIN#:</b> 362810366 <b>Possession Remarks:</b> TBD														
<b>Kitchens:</b> <b>Fam Rm:</b> <b>Basement:</b> <b>Fireplace/Stv:</b> N <b>Heat:</b> <b>A/C:</b> <b>Central Vac:</b> N <b>Apx Age:</b> <b>Apx Sqft:</b> <b>Assessment:</b> <b>POTL:</b> <b>POTL Mo Fee:</b> <b>Elevator/Lift:</b> N <b>Laundry Lev:</b> <b>Phys Hdcap-Eqp:</b> <b>Water Body Name:</b> Buck Lake	<b>Exterior:</b> <b>Drive:</b> <b>Gar/Gar Spcs:</b> <b>Drive Park Spcs:</b> <b>Tot Prk Spcs:</b> <b>UFFI:</b> <b>Pool:</b> <b>Energy Cert:</b> <b>Cert Level:</b> <b>GreenPIS:</b> <b>Prop Feat:</b> Waterfront, Waterfront, Wooded/Treed	<b>Zoning:</b> RU <b>Cable TV:</b> N <b>Hydro:</b> A <b>Gas:</b> N <b>Phone:</b> N <b>Water:</b> None <b>Water Supply:</b> Other <b>Sewer:</b> Unknown <b>Spec Desig:</b> Direct <b>Farm/Agr:</b> <b>Waterfront:</b> Available <b>Retirement:</b> <b>Oth Struct:</b> <b>Survey Type:</b>												
<b>Water Body Type:</b> Lake <b>Water Frontage (M):</b> 189.28 <b>Topography:</b> Rocky, Wooded/Treed, Rolling <b>Water Features:</b> Waterfront-Deeded Access <b>Access to Property:</b> Private Road <b>Docking Type:</b> None <b>Water View:</b> Direct <b>WaterfrontYN:</b> Y <b>Waterfront:</b> Direct <b>Shoreline:</b> Rocky <b>Shoreline Allowance:</b> None <b>Shoreline Exp:</b> Nw <b>Alternative Power:</b> None <b>Easements/Restrict:</b> Unknown <b>Rural Services:</b> Cell Services, Electricity On Road <b>Waterfront Accessory Bldgs:</b> Not Applicable														
<table border="1"> <thead> <tr> <th>#</th> <th>Room</th> <th>Level</th> <th>Length (ft)</th> <th>Width (ft)</th> <th>Description</th> </tr> </thead> <tbody> <tr> <td colspan="6"> <b>Client Remks:</b> Kismet is a large, picturesque and serene retreat located on the Frontenac Arch between Perth Road (Division Street) and the North Basin of Buck Lake, 28 kms. north of Highway 401 in Kingston. Kismet is comprised of 3 adjoining, but legally separate, parcels of land comprising over 200 acres of dramatic Canadian Shield with over 6000 of lakefront facing and abutting Frontenac Park which is a forever wild 52 square kilometer provincial "near wilderness" park. Together, Kismet and the Park occupy the entire south end of the lake thereby ensuring a glorious and peaceful, westerly, wilderness view from the entire Kismet property in perpetuity. A unique and incalculable bonus for purchasers - all 3 parcels are accessed from Perth Road by Kismet Lane, a private road restricted for use by the purchasers and their guests only! The Vendor will provide hydro service to all 3 lots at the Vendor's expense. The Purchasers will be able to enjoy all 48 kilometers of Buck Lake waterfront by boat but there is no access to or from the Rideau Canal thereby contributing further to the tranquility of Kismet. Easy access to Kingston, one of Ontario's oldest and most charming cities, with all of the character, services, and benefits which it has to offer including the St. Lawrence Seaway, the Thousand Islands, Queen's University, and regional health care services. Only 2.5 hours from each of Toronto and Montreal, and 1.5 hours from Ottawa.               </td> </tr> </tbody> </table>			#	Room	Level	Length (ft)	Width (ft)	Description	<b>Client Remks:</b> Kismet is a large, picturesque and serene retreat located on the Frontenac Arch between Perth Road (Division Street) and the North Basin of Buck Lake, 28 kms. north of Highway 401 in Kingston. Kismet is comprised of 3 adjoining, but legally separate, parcels of land comprising over 200 acres of dramatic Canadian Shield with over 6000 of lakefront facing and abutting Frontenac Park which is a forever wild 52 square kilometer provincial "near wilderness" park. Together, Kismet and the Park occupy the entire south end of the lake thereby ensuring a glorious and peaceful, westerly, wilderness view from the entire Kismet property in perpetuity. A unique and incalculable bonus for purchasers - all 3 parcels are accessed from Perth Road by Kismet Lane, a private road restricted for use by the purchasers and their guests only! The Vendor will provide hydro service to all 3 lots at the Vendor's expense. The Purchasers will be able to enjoy all 48 kilometers of Buck Lake waterfront by boat but there is no access to or from the Rideau Canal thereby contributing further to the tranquility of Kismet. Easy access to Kingston, one of Ontario's oldest and most charming cities, with all of the character, services, and benefits which it has to offer including the St. Lawrence Seaway, the Thousand Islands, Queen's University, and regional health care services. Only 2.5 hours from each of Toronto and Montreal, and 1.5 hours from Ottawa.					
#	Room	Level	Length (ft)	Width (ft)	Description									
<b>Client Remks:</b> Kismet is a large, picturesque and serene retreat located on the Frontenac Arch between Perth Road (Division Street) and the North Basin of Buck Lake, 28 kms. north of Highway 401 in Kingston. Kismet is comprised of 3 adjoining, but legally separate, parcels of land comprising over 200 acres of dramatic Canadian Shield with over 6000 of lakefront facing and abutting Frontenac Park which is a forever wild 52 square kilometer provincial "near wilderness" park. Together, Kismet and the Park occupy the entire south end of the lake thereby ensuring a glorious and peaceful, westerly, wilderness view from the entire Kismet property in perpetuity. A unique and incalculable bonus for purchasers - all 3 parcels are accessed from Perth Road by Kismet Lane, a private road restricted for use by the purchasers and their guests only! The Vendor will provide hydro service to all 3 lots at the Vendor's expense. The Purchasers will be able to enjoy all 48 kilometers of Buck Lake waterfront by boat but there is no access to or from the Rideau Canal thereby contributing further to the tranquility of Kismet. Easy access to Kingston, one of Ontario's oldest and most charming cities, with all of the character, services, and benefits which it has to offer including the St. Lawrence Seaway, the Thousand Islands, Queen's University, and regional health care services. Only 2.5 hours from each of Toronto and Montreal, and 1.5 hours from Ottawa.														
<b>Listing Contracted With:</b> ROYAL LEPAGE PROALLIANCE REALTY, BROKERAGE <b>Ph:</b> 613-273-9595														



## Questions? Contact us:

**Tammy & Heath Gurr**

Royal LePage ProAlliance Realty, Brokerage



Westport Office:  
7 Spring Street, P.O. Box 148,  
Westport, ON K0G 1X0

[www.gurreathomes.com](http://www.gurreathomes.com)  
[info@gurreathomes.com](mailto:info@gurreathomes.com)  
(613) 273-9595

Kingston Office:  
640 Cataraqui Woods Drive  
Kingston, ON K7P 2Y5

*Your Total Real Estate Package!*