

Superb Rural Location!

40254594

\$ 594,900

Detached Home

3 Bedrooms

3 Bathrooms

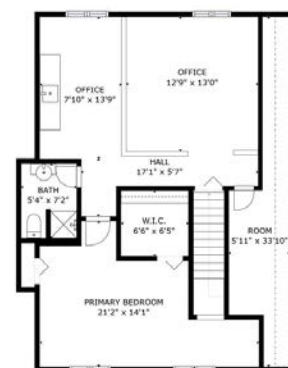
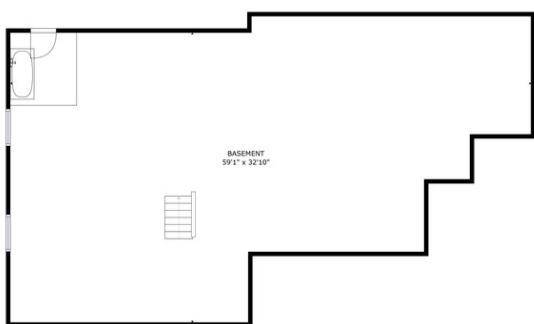
1 Acre



291 Tower Road, Lansdowne, ON

Beautiful and inviting cedar home located just north of the village of Lansdowne on a private treed, one acre lot.

The home is calm and spacious with wood accents, soaring cathedral ceilings and a warm and relaxing vibe throughout. There are two beautiful screened in porches on both the front and the back of the home for bug-free enjoyment of the outdoors. The floor plan of the home starts with an entryway with a small mudroom that opens up to the right into a lovely sitting room - a perfect spot for relaxing with a good book.



Your Total Real Estate Package!

Tammy & Heath Gurr

Royal LePage ProAlliance Realty, Brokerage



www.gurreathomes.com

info@gurreathomes.com

(613) 273-9595



Not intended to solicit clients under contract. The trademarks REALTOR®, REALTORS® and the REALTOR® logo are controlled by The Canadian Real Estate Association (CREA) and identify real estate professionals who are members of CREA. Used under license. The trademarks MLS®, Multiple Listing Service® and the associated logos are owned by The Canadian Real Estate Association (CREA) and identify the quality of services provided by real estate professionals who are members of CREA. Used under license.