

CERTIFICATE OF REGISTRATION  
LEVEL I  
UNITS 1 TO 3 INCLUSIVE

REGISTERED IN THE LAND REGISTRY OFFICE FOR THE REGISTRY  
DIVISION OF FRONTENAC No. 13 AT KINGSTON AT 2:46  
O'CLOCK ON THE 24th DAY OF August 1987

*David T. Humphries*  
LAND REGISTRAR

EXAMINER'S APPROVAL  
APPROVED August 4<sup>th</sup>, 1987

*H. Mett*  
ASST. EXAMINER OF SURVEYS

SURVEYOR'S CERTIFICATE

I CERTIFY THAT  
THIS SURVEY AND PLAN ARE CORRECT AND IN  
ACCORDANCE WITH THE SURVEYS ACT, THE CONDOMINIUM  
ACT AND THE REGISTRY ACT AND THE REGULATIONS MADE  
THEREUNDER.  
THE SURVEY WAS COMPLETED ON THE 20th  
DAY OF March 1987

*David T. Humphries*  
DAVID T. HUMPHRIES O.L.S.

DECLARATION REGISTERED AS No. 457440

OWNER'S CERTIFICATE

THIS IS TO CERTIFY THAT THE PROPERTY INCLUDED  
IN THIS PLAN HAS BEEN LAID OUT INTO UNITS AND  
COMMON ELEMENTS IN ACCORDANCE WITH MY  
INSTRUCTIONS  
DATED AT Kingston  
THIS DAY OF 20 March 1987  
A.B. SMITH *A.B. Smith* PRESIDENT  
HOMESTEAD LAND HOLDINGS LIMITED

Parts 1 are hereby exempted  
under section 50(3) of the CONDOMINIUM  
ACT.

THIS 3<sup>rd</sup> DAY OF July 1987  
*B. Grandmaitre*  
B. Grandmaitre  
Minister, Municipal Affairs

INDEX OF SHEETS

- PART I
- SHEET 1 - PLAN OF SURVEY SHOWING PERIMETER OF LAND AND UNITS 1 TO 3 INCL. ON LEVEL 1.
- SHEET 2 - PLAN OF SURVEY SHOWING UNITS 1 TO 6 INCL. ON LEVELS 2 TO 12 INCL.
- SHEET 3 - PLAN OF SURVEY SHOWING UNITS 1 TO 4 INCL. ON LEVEL 13.
- SHEET 4 - PLAN OF SURVEY SHOWING UNITS 1 TO 82 INCL. ON LEVEL A.
- SHEET 5 - PLAN SHOWING EXCLUSIVE USE PORTIONS OF THE COMMON ELEMENT ON LEVEL 1.

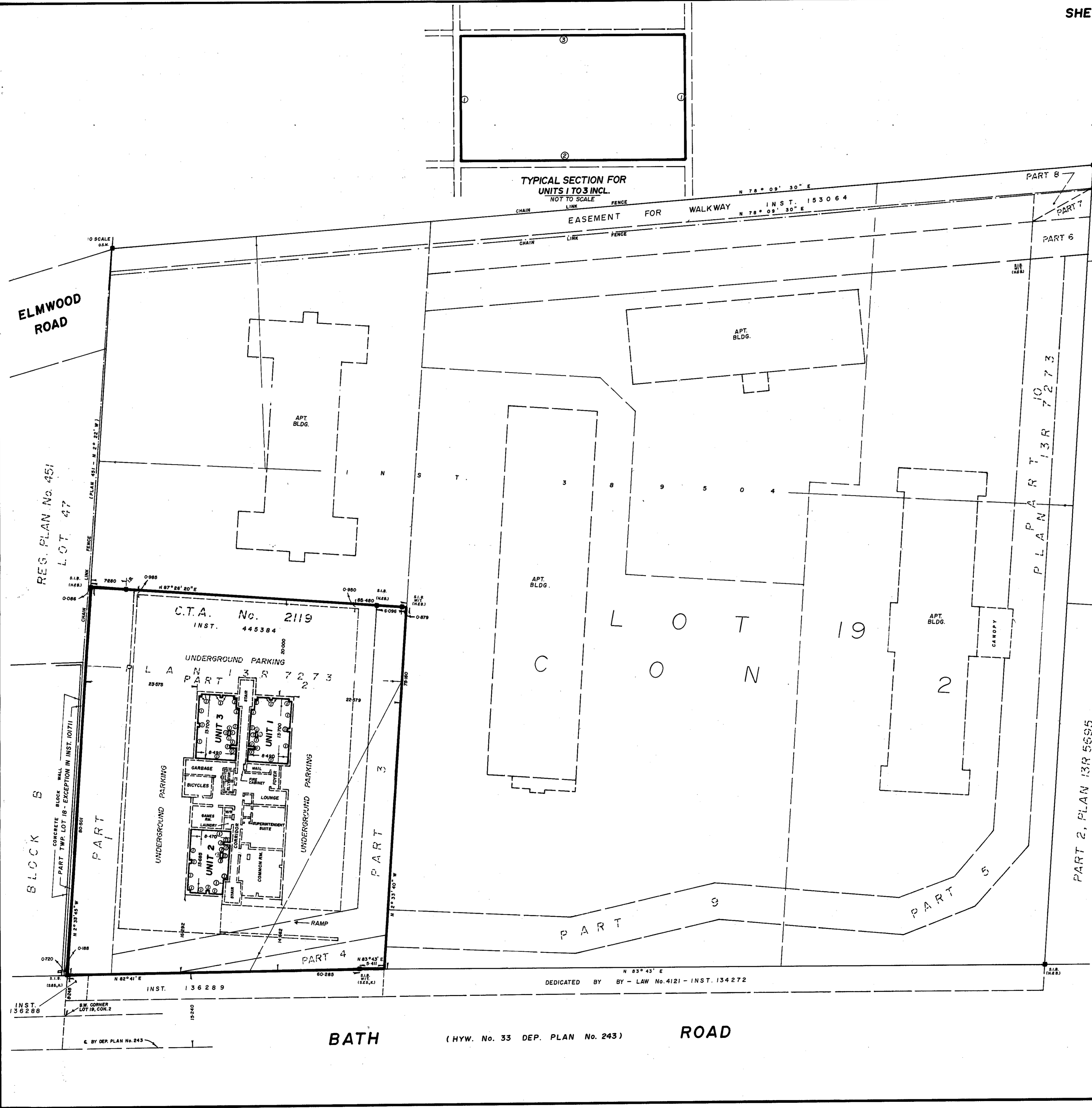
PART 2 - 23 SHEETS STRUCTURAL PLANS (ARCHITECTURAL)  
PART 3 - 10 SHEETS STRUCTURAL PLANS (ENGINEERING)  
SURVEYOR'S CERTIFICATE

I HEREBY CERTIFY THAT THE BUILDING HAS BEEN CONSTRUCTED  
AND THAT THE DIAGRAMS OF THE UNITS SHOWN ON THIS PLAN  
ARE SUBSTANTIALLY ACCURATE AND SUBSTANTIALLY IN  
ACCORDANCE WITH THE STRUCTURAL PLANS.

DATE 20 Mar. 1987 *David T. Humphries*  
DAVID T. HUMPHRIES  
ONTARIO LAND SURVEYOR

NOTES

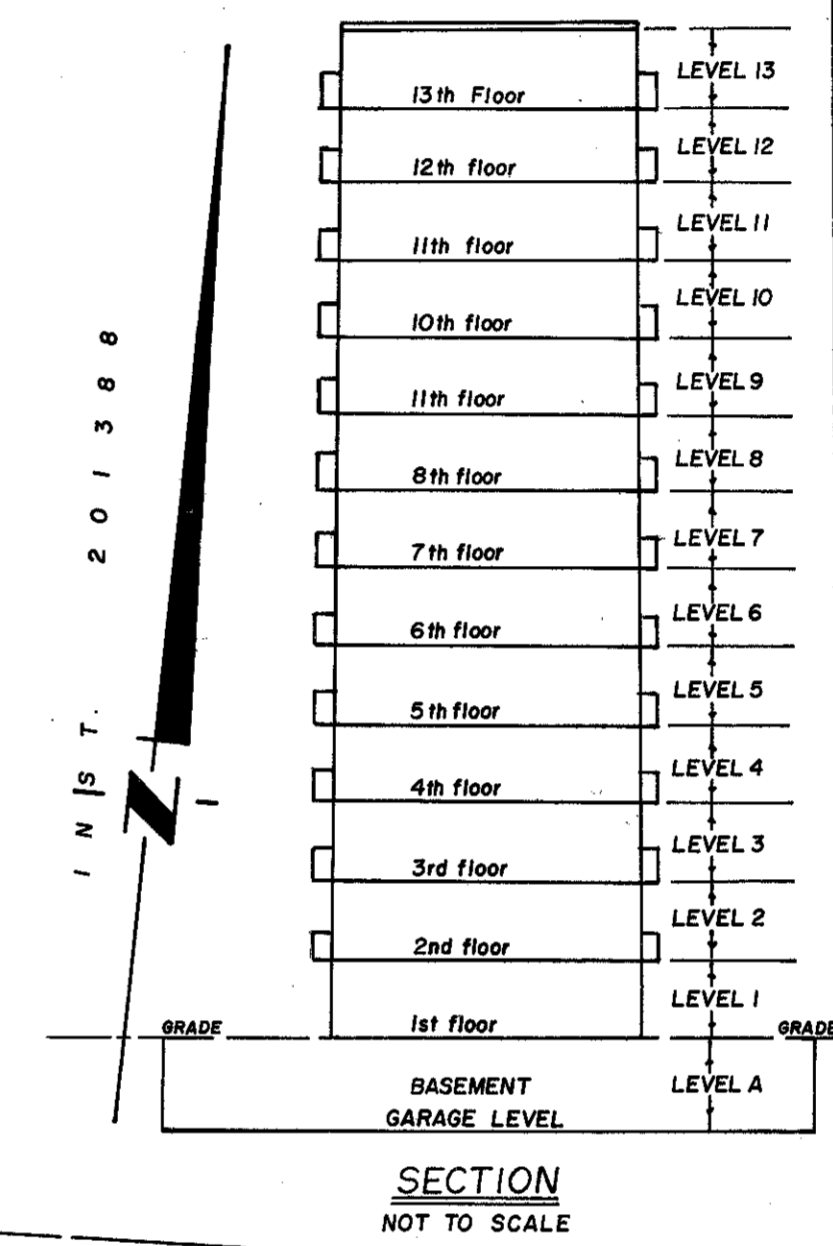
- BEARINGS ARE ASTRONOMIC, DERIVED FROM THE NORTHERLY LIMIT OF DEPOSITED PLAN No. 243, HAVING A BEARING OF N 82° 41' E.
- ANY UNNUMBERED AREA IS PART OF THE COMMON ELEMENT. SEE DECLARATION.
- FOR UNIT BOUNDARIES IN THE VICINITY OF DOORS AND WINDOWS
- DENOTES UNIT BOUNDARIES AND BOUNDARIES OF THE COMMON ELEMENT.
- DENOTES BUILDING WALLS AND COLUMNS.
- DENOTES FOUND.  
S.I.B. DENOTES 1" SQ. IRON BAR.  
(H.&B.) DENOTES HUMPHRIES & BURGHAM LTD.  
(S.&S.) DENOTES SMITH & SMITH, KINGSTON LTD.
- THE MONUMENTS THAT CONTROL THE EXTENT AND LOCATION OF THE UNITS ARE THE WALLS, THE FLOORS AND THE CEILINGS AS MORE PARTICULARLY DESCRIBED IN SCHEDULE 'C' OF THE DECLARATION.



ELMWOOD STREET

ELMWOOD ROAD

BATH ROAD (HYW. No. 33 DEP. PLAN No. 243)



PLAN OF SURVEY OF  
PART OF LOT 19,  
CONCESSION 2,  
(Formerly Township of Kingston)  
CITY OF KINGSTON  
COUNTY OF FRONTENAC

Scale: 1:400  
1987  
HUMPHRIES & BURGHAM LTD.

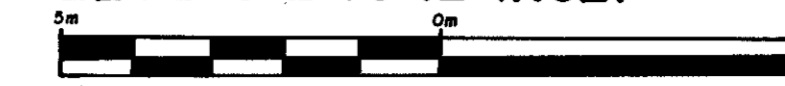
METRIC  
DISTANCES SHOWN ON THIS PLAN ARE IN METRES  
AND CAN BE CONVERTED TO FEET BY DIVIDING BY  
0.3048

- LEGEND
- ① BACKSIDE FACE OF DRYWALL.
  - ② UPPER SURFACE OF CONCRETE FLOOR.
  - ③ LOWER SURFACE OF CONCRETE CEILING.

HUMPHRIES & BURGHAM LTD.  
ONTARIO LAND SURVEYORS  
KINGSTON, ONTARIO.

0120000

PLAN OF SURVEY SHOWING UNITS 1 TO 6 INCL. ON LEVELS 2 TO 12 INCL.



Scale 1:100 1987 HUMPHRIES & BURGHAM LTD.

METRIC DISTANCES SHOWN ON THIS PLAN ARE IN METRES AND CAN BE CONVERTED TO FEET BY DIVIDING BY 0.3048

CERTIFICATE OF REGISTRATION

LEVELS 2 TO 12 INCL. UNITS 1 TO 6 INCL.

REGISTERED IN THE LAND REGISTRY OFFICE FOR THE REGISTRY DIVISION OF FRONTENAC No. 13 AT KINGSTON AT 9 O'CLOCK ON THE 24th DAY OF August 1987

Signature of Land Registrar

EXAMINER'S APPROVAL

APPROVED August 4th 1987

Signature of Examiner of Surveys

SURVEYOR'S CERTIFICATE

I CERTIFY THAT THIS SURVEY AND PLAN ARE CORRECT AND IN ACCORDANCE WITH THE SURVEYS ACT, AND THE CONDOMINIUM ACT AND THE REGULATIONS MADE THEREUNDER.

THE SURVEY WAS COMPLETED ON THE 20th DAY OF March 1987

DATE 20 Mar. 1987

Signature of Surveyor David T. Humphries

DECLARATION REGISTERED AS No. 457440

OWNER'S CERTIFICATE

THIS IS TO CERTIFY THAT THE PROPERTY INCLUDED IN THIS PLAN HAS BEEN LAID OUT INTO UNITS AND COMMON ELEMENTS IN ACCORDANCE WITH MY INSTRUCTIONS.

DATE AT KINGSTON THIS 20th DAY OF March 1987

Signature of A.S. Smith, President

Parts 1 are hereby exempted under section 52(2) of the CONDOMINIUM ACT.

THIS 31st DAY OF July 1987

Signature of B. Grandmaitre, Mayor

SURVEYOR'S CERTIFICATE

I CERTIFY THAT THE BUILDING HAS BEEN CONSTRUCTED AND THAT THE DIAGRAMS OF THE UNITS SHOWN ON THIS PLAN ARE SUBSTANTIALLY ACCURATE AND SUBSTANTIALLY IN ACCORDANCE WITH THE STRUCTURAL PLANS.

DATE 20 Mar. 1987

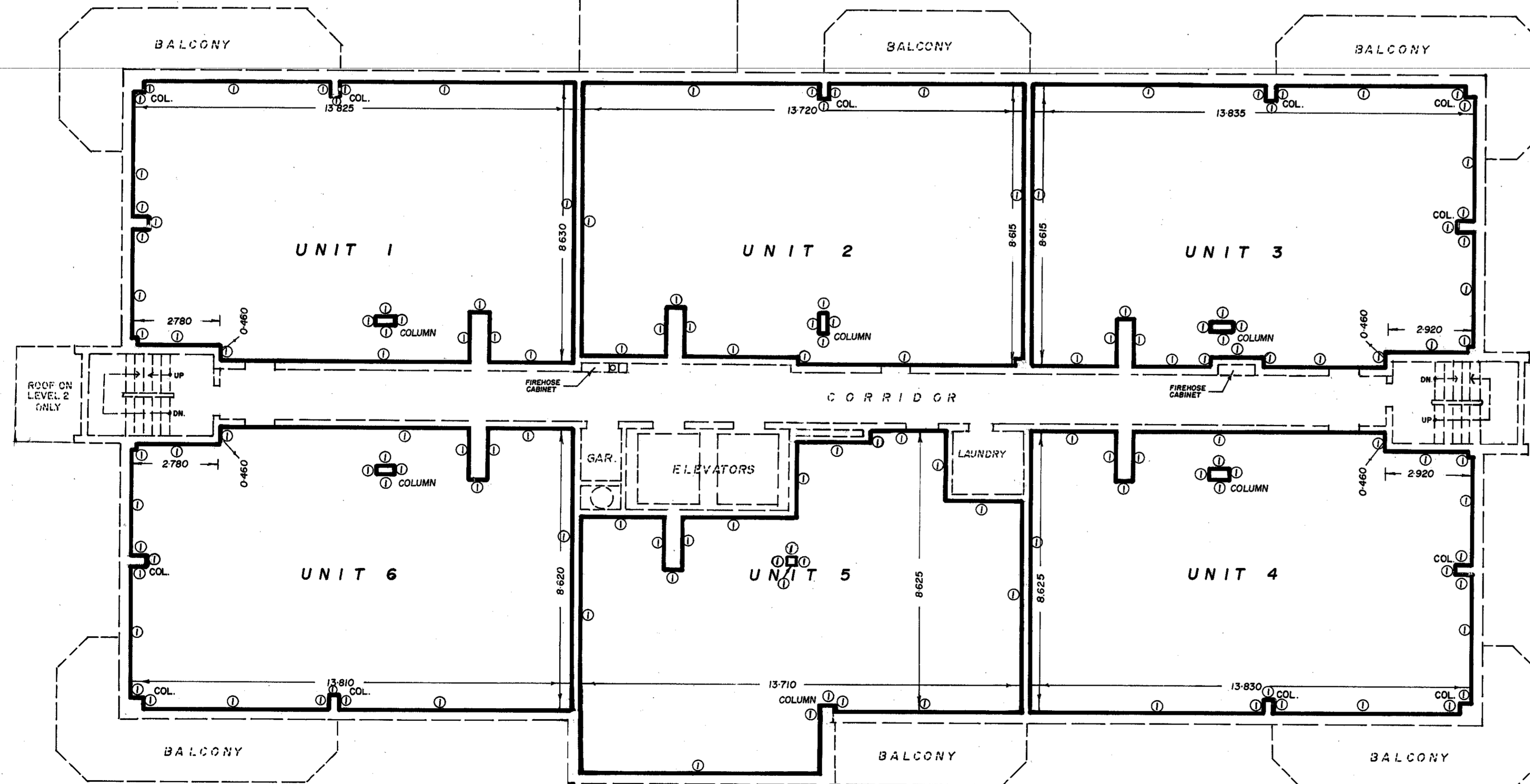
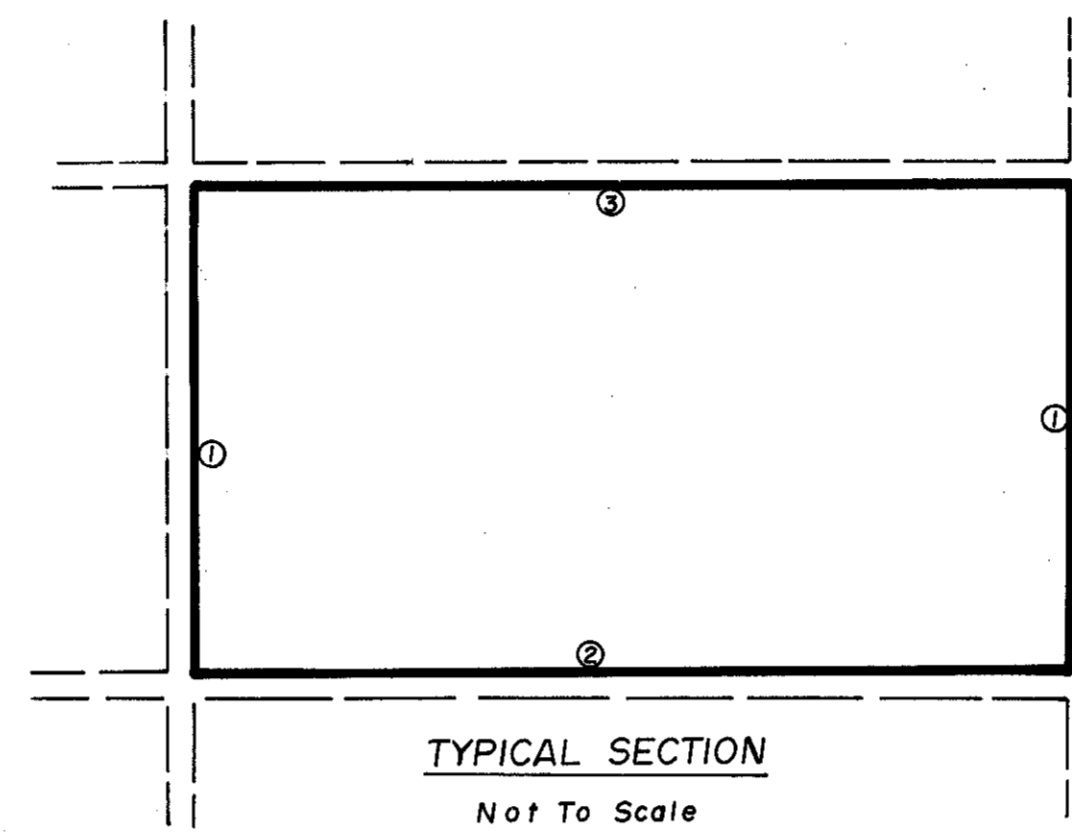
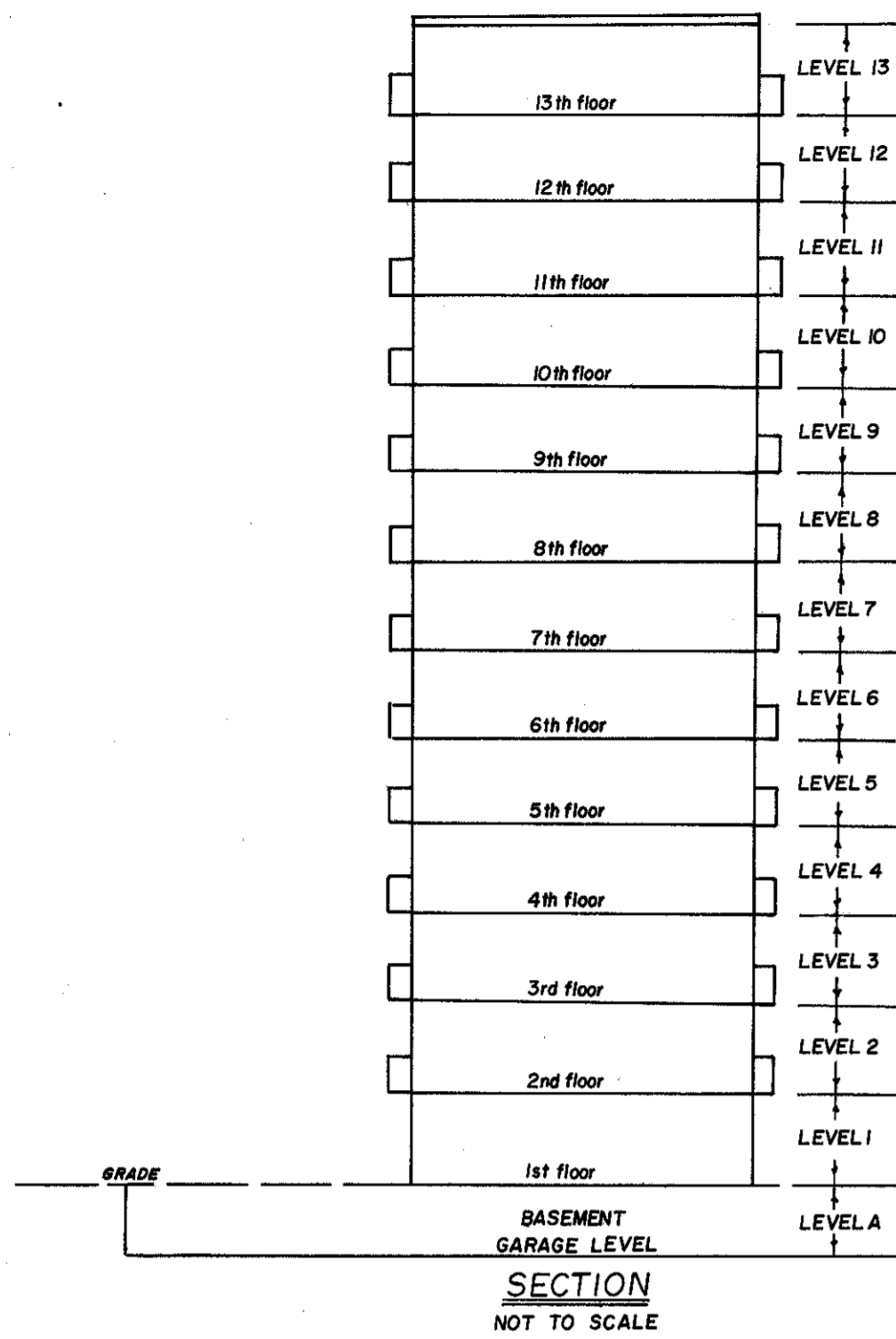
Signature of David T. Humphries

NOTES

- 1. ANY UNNUMBERED AREA IS PART OF THE COMMON ELEMENT.
2. FOR UNIT BOUNDARIES IN THE VICINITY OF DOORS AND WINDOWS SEE DECLARATION.
3. --- DENOTES UNIT BOUNDARIES AND BOUNDARIES OF THE COMMON ELEMENT.
4. - - - - DENOTES BUILDING WALLS & COLUMNS.
5. THE MONUMENTS THAT CONTROL THE EXTENT AND LOCATION OF THE UNITS ARE THE WALLS, THE FLOORS AND THE CEILINGS AS MORE PARTICULARLY DESCRIBED IN SCHEDULE 'C' OF THE DECLARATION.

LEGEND

- 1 BACKSIDE FACE OF DRYWALL.
2 UPPER SURFACE OF CONCRETE FLOOR.
3 LOWER SURFACE OF CONCRETE CEILING.



HUMPHRIES & BURGHAM LTD., ONTARIO LAND SURVEYORS, KINGSTON, ONTARIO.

Handwritten note: BUDO 21 (2)

PLAN OF SURVEY SHOWING UNITS 1 TO 4 INCL. ON LEVEL 13



Scale 1:100 1987 HUMPHRIES & BURGHAM LTD.

METRIC DISTANCES SHOWN ON THIS PLAN ARE IN METRES AND CAN BE CONVERTED TO FEET BY DIVIDING BY 0.3048

CERTIFICATE OF REGISTRATION

LEVEL 13 UNITS 1 TO 4 INCL.

REGISTERED IN THE LAND REGISTRY OFFICE FOR THE REGISTRY DIVISION OF FRONTENAC No. 13 AT KINGSTON AT 2:46 O'CLOCK ON THE 26 DAY OF August 1987

Signature of Registrar

EXAMINER'S APPROVAL

APPROVED August 4th, 1987

Signature of Examiner

SURVEYOR'S CERTIFICATE

I CERTIFY THAT THIS SURVEY AND PLAN ARE CORRECT AND IN ACCORDANCE WITH THE SURVEY ACT, AND THE CONDOMINIUM ACT AND THE REGULATIONS MADE THEREUNDER.

THE SURVEY WAS COMPLETED ON THE 20th DAY OF March 1987

DATE 20 March 1987

Signature of Surveyor

DECLARATION REGISTERED AS No. 457440

OWNER'S CERTIFICATE

THIS IS TO CERTIFY THAT THE PROPERTY INCLUDED IN THIS PLAN HAS BEEN LAID OUT INTO UNITS AND COMMON ELEMENTS IN ACCORDANCE WITH MY INSTRUCTIONS.

DATED AT KINGSTON THIS 20 DAY OF March 1987

Signature of President

Parts 1 are hereby exempted under section 100(1) of the CONDOMINIUM ACT.

THIS 31st DAY OF July 1987 Signature of Registrar

SURVEYOR'S CERTIFICATE

I CERTIFY THAT THE BUILDING HAS BEEN CONSTRUCTED AND THAT THE DIAGRAMS OF THE UNITS SHOWN ON THIS PLAN ARE SUBSTANTIALLY ACCURATE AND SUBSTANTIALLY IN ACCORDANCE WITH THE STRUCTURAL PLANS.

DATE 20 Mar 1987 Signature of Surveyor

NOTES

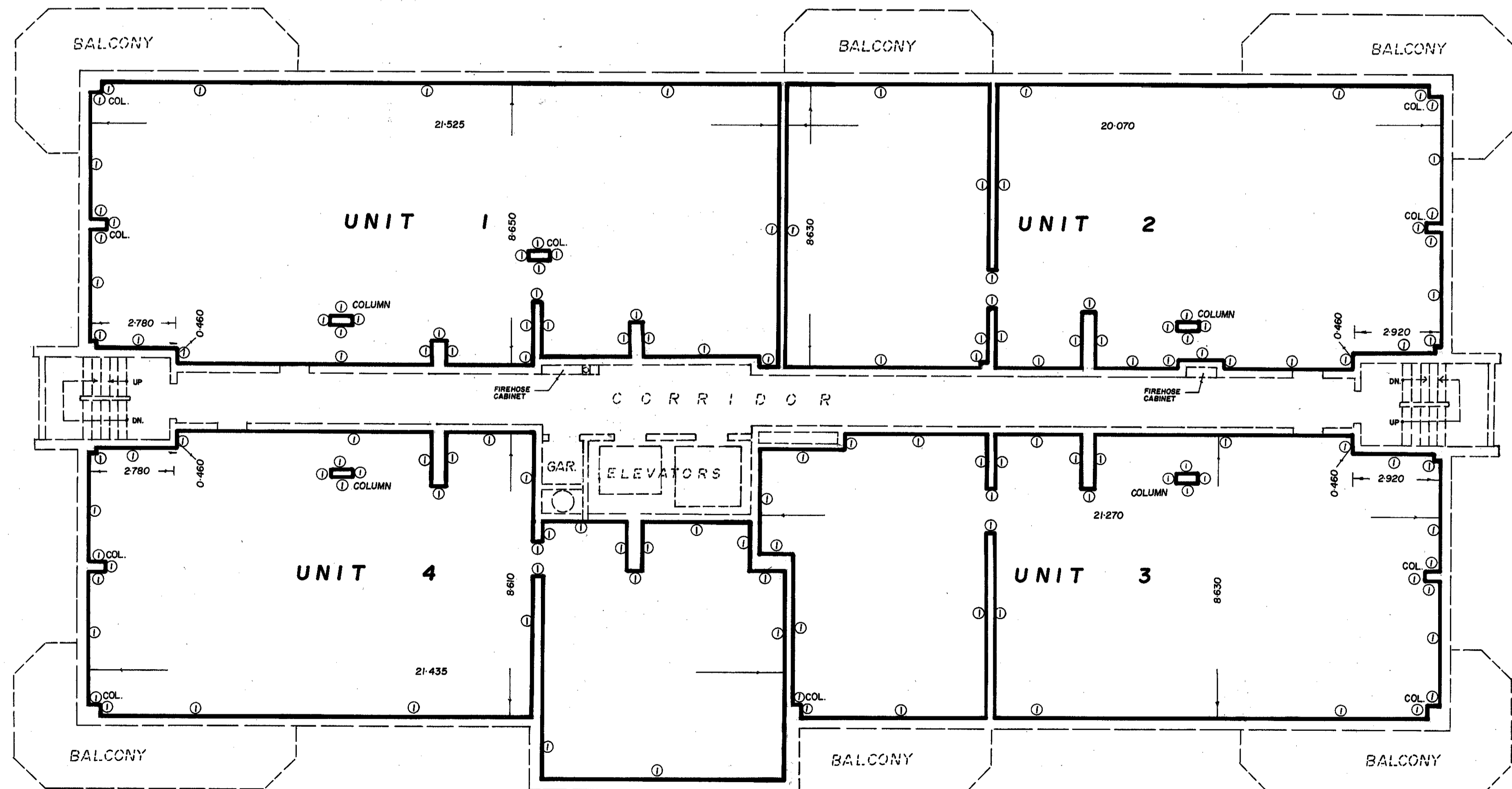
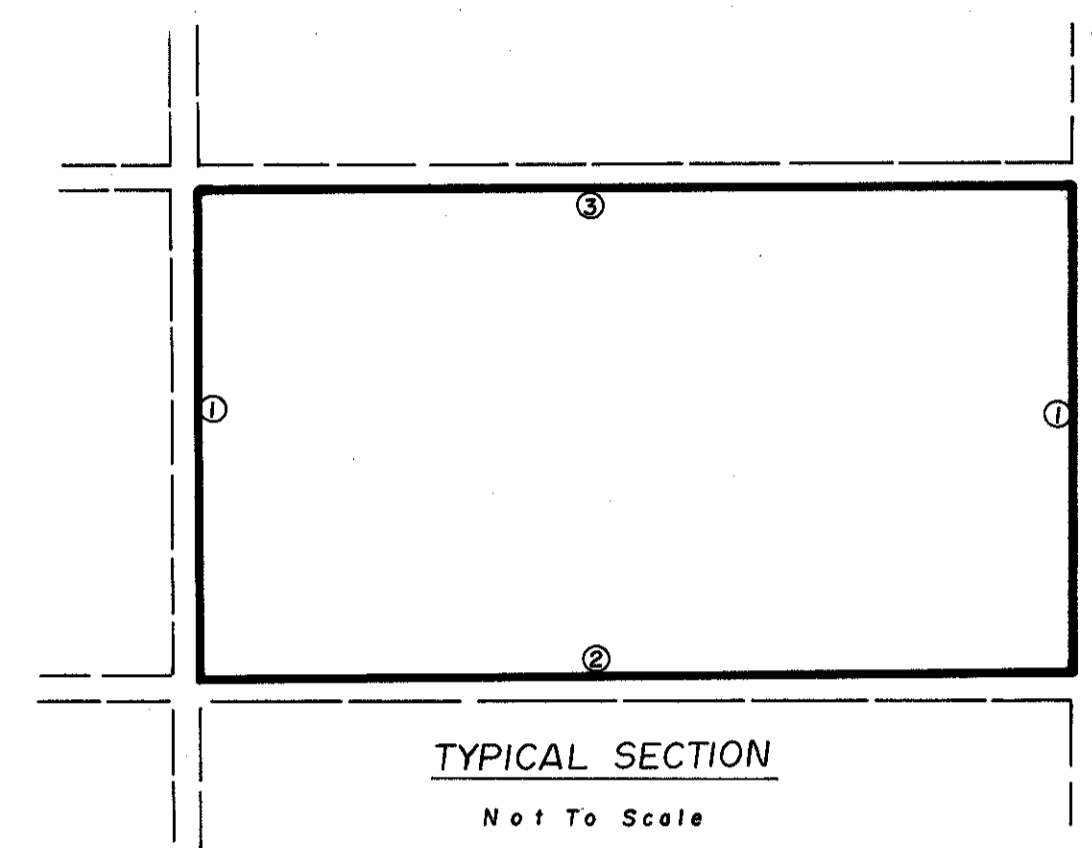
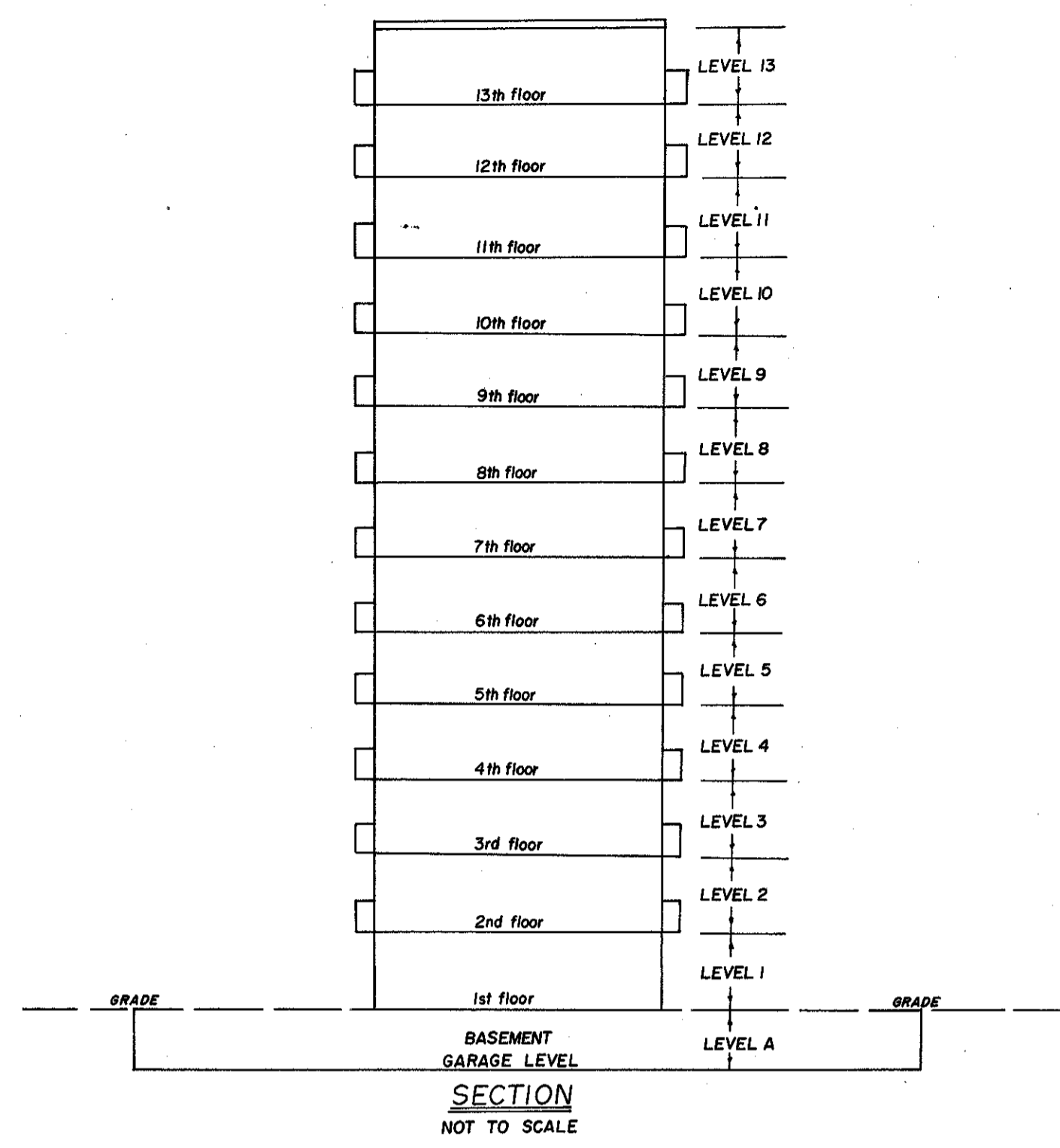
- 1 ANY UNNUMBERED AREA IS PART OF THE COMMON ELEMENT.
2 FOR UNIT BOUNDARIES IN THE VICINITY OF DOORS AND WINDOWS SEE DECLARATION.
3 DENOTES UNIT BOUNDARIES AND BOUNDARIES OF THE COMMON ELEMENT.
4 DENOTES BUILDING WALLS & COLUMNS.
5 THE MONUMENTS THAT CONTROL THE EXTENT AND LOCATION OF THE UNITS ARE THE WALLS, THE FLOORS, AND THE CEILINGS AS MORE PARTICULARLY DESCRIBED IN SCHEDULE 'C' OF THE DECLARATION.

LEGEND

- 1 BACKSIDE FACE OF DRYWALL.
2 UPPER SURFACE OF CONCRETE FLOOR.
3 LOWER SURFACE OF CONCRETE CEILING.

HUMPHRIES & BURGHAM LTD., ONTARIO LAND SURVEYORS, KINGSTON, ONTARIO.

CARD 21 (3)



CERTIFICATE OF REGISTRATION

LEVEL A  
UNITS 1 TO 82 INCL.

REGISTERED IN THE LAND REGISTRY OFFICE FOR THE REGISTRY DIVISION OF FRONTENAC No. 13 AT KINGSTON AT 2:46 O'CLOCK ON THE 22 DAY OF August 1987

*Justin Little*  
LAND REGISTRAR

EXAMINER'S APPROVAL

APPROVED August 4<sup>th</sup> 1987

*Ed Math*  
ASSISTANT EXAMINER OF SURVEYS

SURVEYOR'S CERTIFICATE

I CERTIFY THAT THIS SURVEY AND PLAN ARE CORRECT AND IN ACCORDANCE WITH THE SURVEYS ACT, AND THE CONDOMINIUM ACT AND THE REGULATIONS MADE THEREUNDER.

THE SURVEY WAS COMPLETED ON THE DAY OF 20 Mar. 1987

DATE 20 Mar. 1987

*David T. Humphries*  
DAVID T. HUMPHRIES O.L.S.

DECLARATION REGISTERED AS No. 457440

OWNER'S CERTIFICATE

THIS IS TO CERTIFY THAT THE PROPERTY INCLUDED IN THIS PLAN HAS BEEN LAID OUT INTO UNITS AND COMMON ELEMENTS IN ACCORDANCE WITH MY INSTRUCTIONS.

DATED AT KINGSTON THIS 20 DAY OF March 1987  
A.B. SMITH *A.B. Smith* PRESIDENT  
HOMESTEAD LAND HOLDINGS LIMITED

Parts 1 are hereby exempted under section 6(1) of the CONDOMINIUM ACT.

THIS 31<sup>st</sup> DAY OF July 1987  
*B. Grandmaître*  
Minister, Municipal Affairs

SURVEYOR'S CERTIFICATE

I CERTIFY THAT THE BUILDING HAS BEEN CONSTRUCTED AND THAT THE DIAGRAMS OF THE UNITS SHOWN ON THIS PLAN ARE SUBSTANTIALLY ACCURATE AND SUBSTANTIALLY IN ACCORDANCE WITH THE STRUCTURAL PLANS.

DATE 20 Mar. 1987. *David T. Humphries*

DAVID T. HUMPHRIES  
ONTARIO LAND SURVEYOR

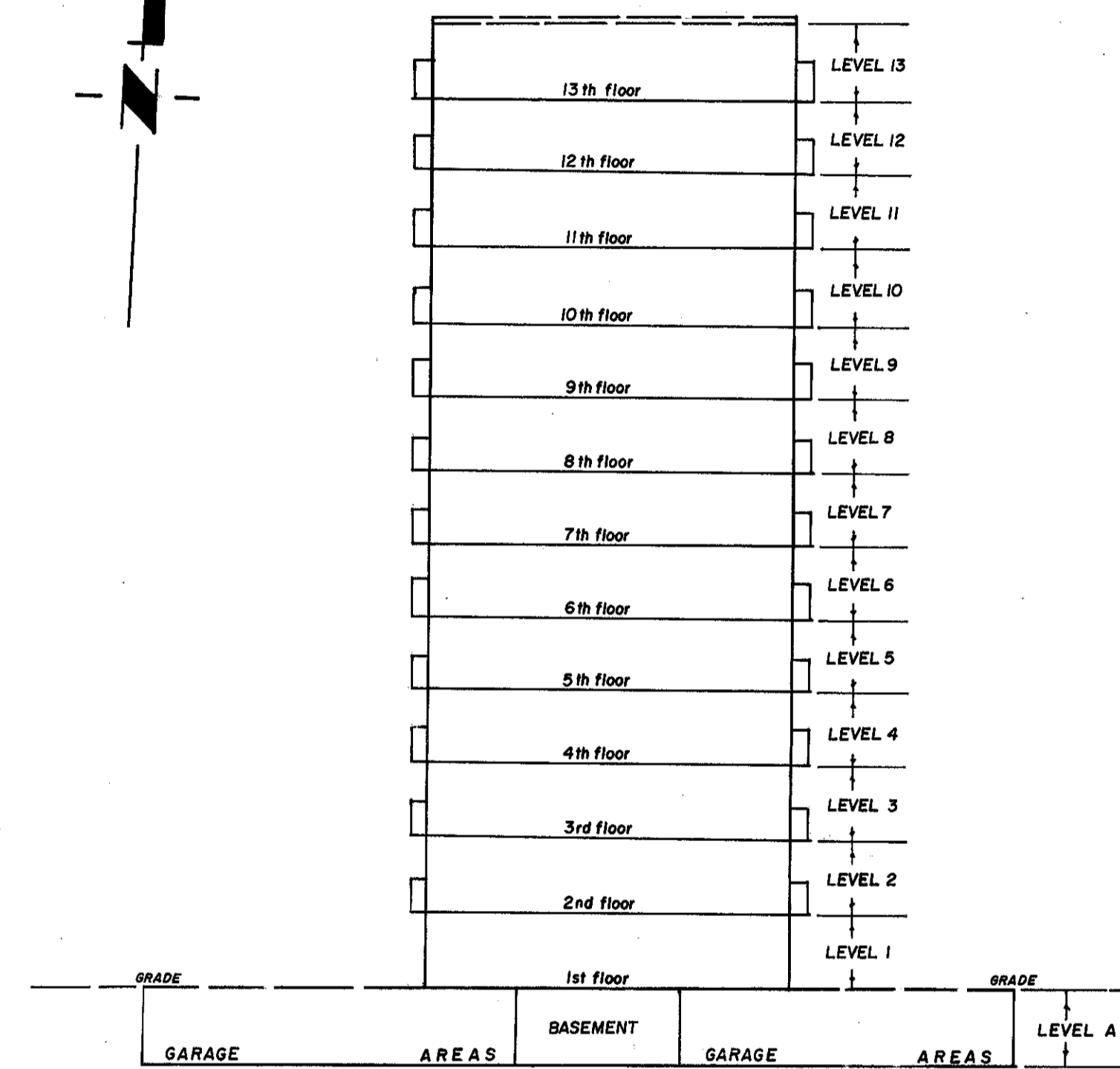
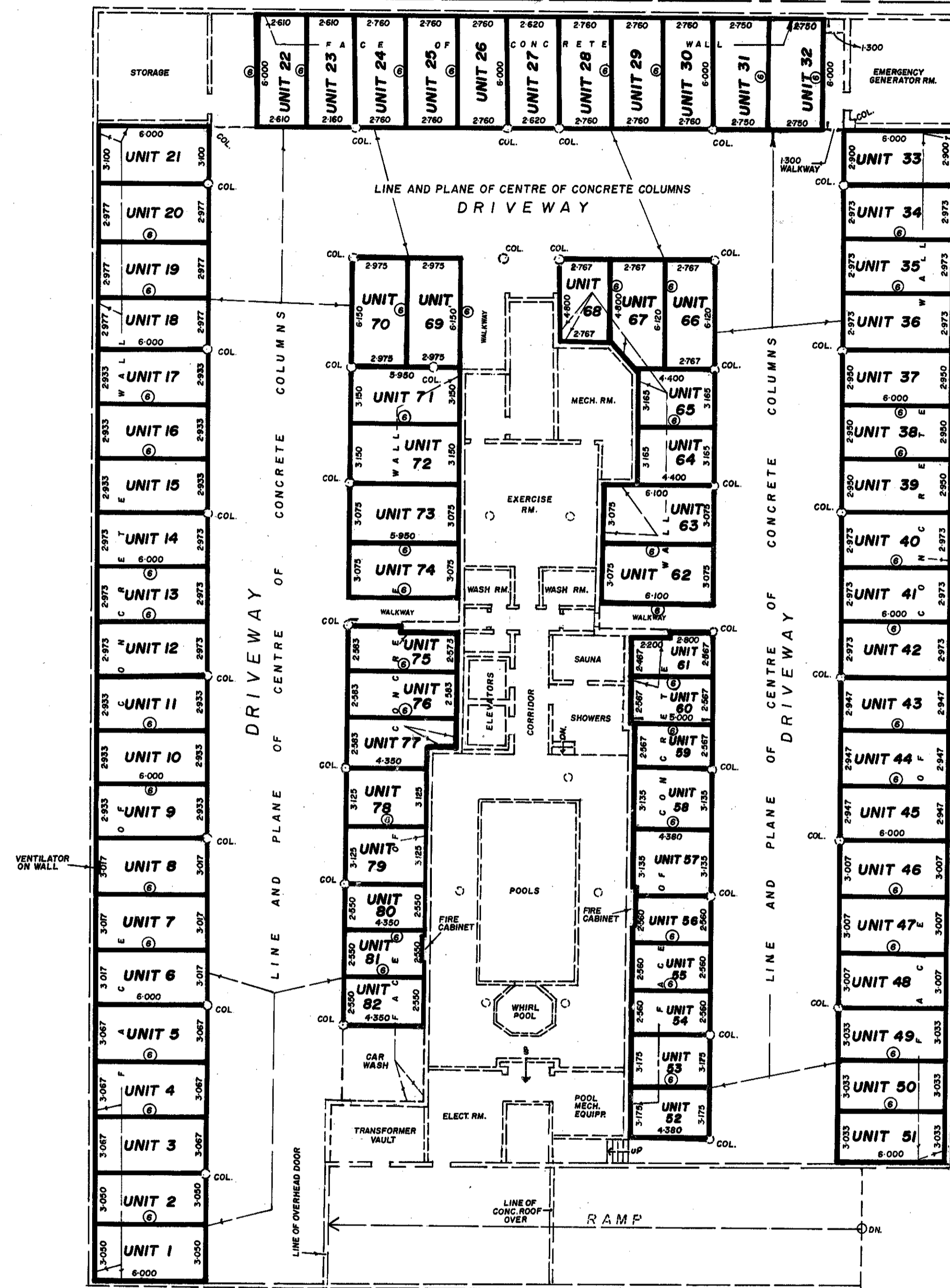
NOTES

1. ANY UNNUMBERED AREA IS PART OF THE COMMON ELEMENT.
2. FOR UNIT BOUNDARIES IN THE VICINITY OF DOORS AND WINDOWS SEE DECLARATION.
3. ——— DENOTES UNIT BOUNDARIES AND BOUNDARIES OF THE COMMON ELEMENT.
4. ——— DENOTES BUILDING WALLS & COLUMNS.
5. THE MONUMENTS THAT CONTROL THE EXTENT AND LOCATION OF THE UNITS ARE THE WALLS, THE FLOORS AND THE CEILINGS AS MORE PARTICULARLY DESCRIBED IN SCHEDULE 'C' OF THE DECLARATION.
6. (C) DENOTES VERTICAL PLANE SET AT DISTANCES AS INDICATED.

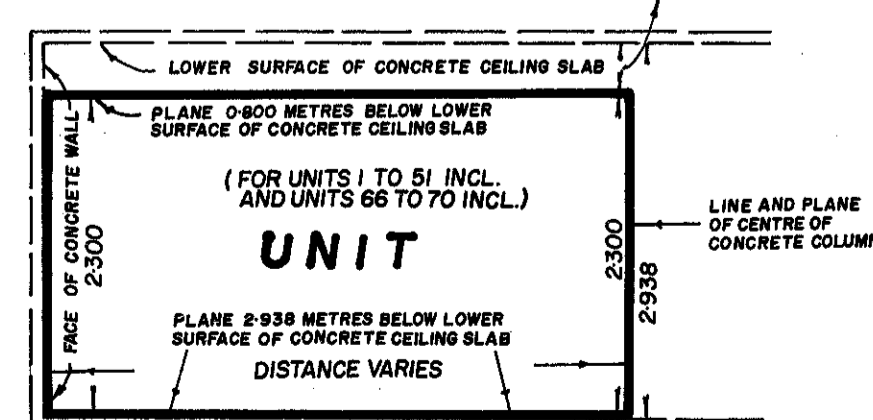
PLAN OF SURVEY SHOWING UNITS 1 TO 82 INCL. ON LEVEL A

Scale 1:200 1987  
HUMPHRIES & BURGHAM LTD.

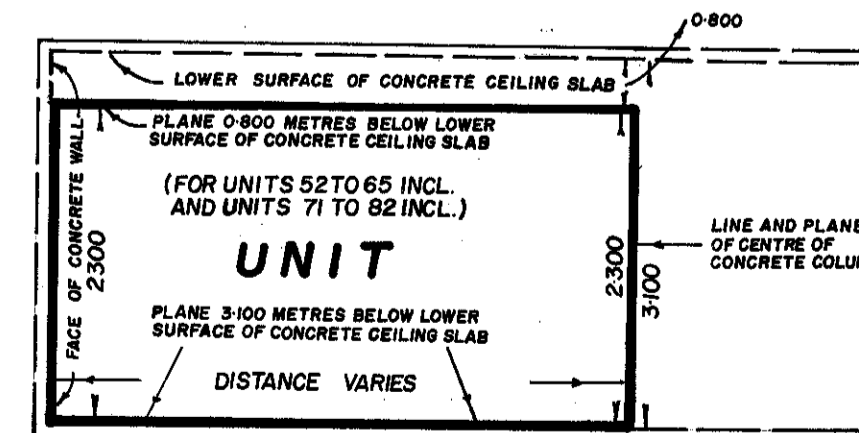
METRIC DISTANCES SHOWN ON THIS PLAN ARE IN METRES AND CAN BE CONVERTED TO FEET BY DIVIDING BY 0.3048



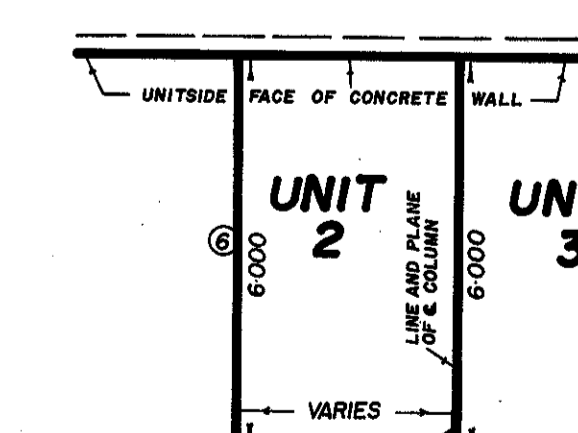
SECTION NOT TO SCALE



TYPICAL SECTION FOR PARKING UNITS NOT TO SCALE



TYPICAL SECTION FOR PARKING UNITS NOT TO SCALE



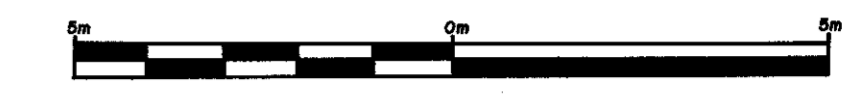
TYPICAL ILLUSTRATION NOT TO SCALE

BATH ROAD

HUMPHRIES & BURGHAM LTD.,  
ONTARIO LAND SURVEYORS,  
KINGSTON, ONTARIO.

3300 21 (4)

PLAN OF SURVEY SHOWING EXCLUSIVE USE PORTIONS OF THE COMMON ELEMENT ON LEVEL 1



Scale: 1:100 1987

HUMPHRIES & BURGHAM LTD.

METRIC DISTANCES SHOWN ON THIS PLAN ARE IN METRES AND CAN BE CONVERTED TO FEET BY DIVIDING BY 0.3048

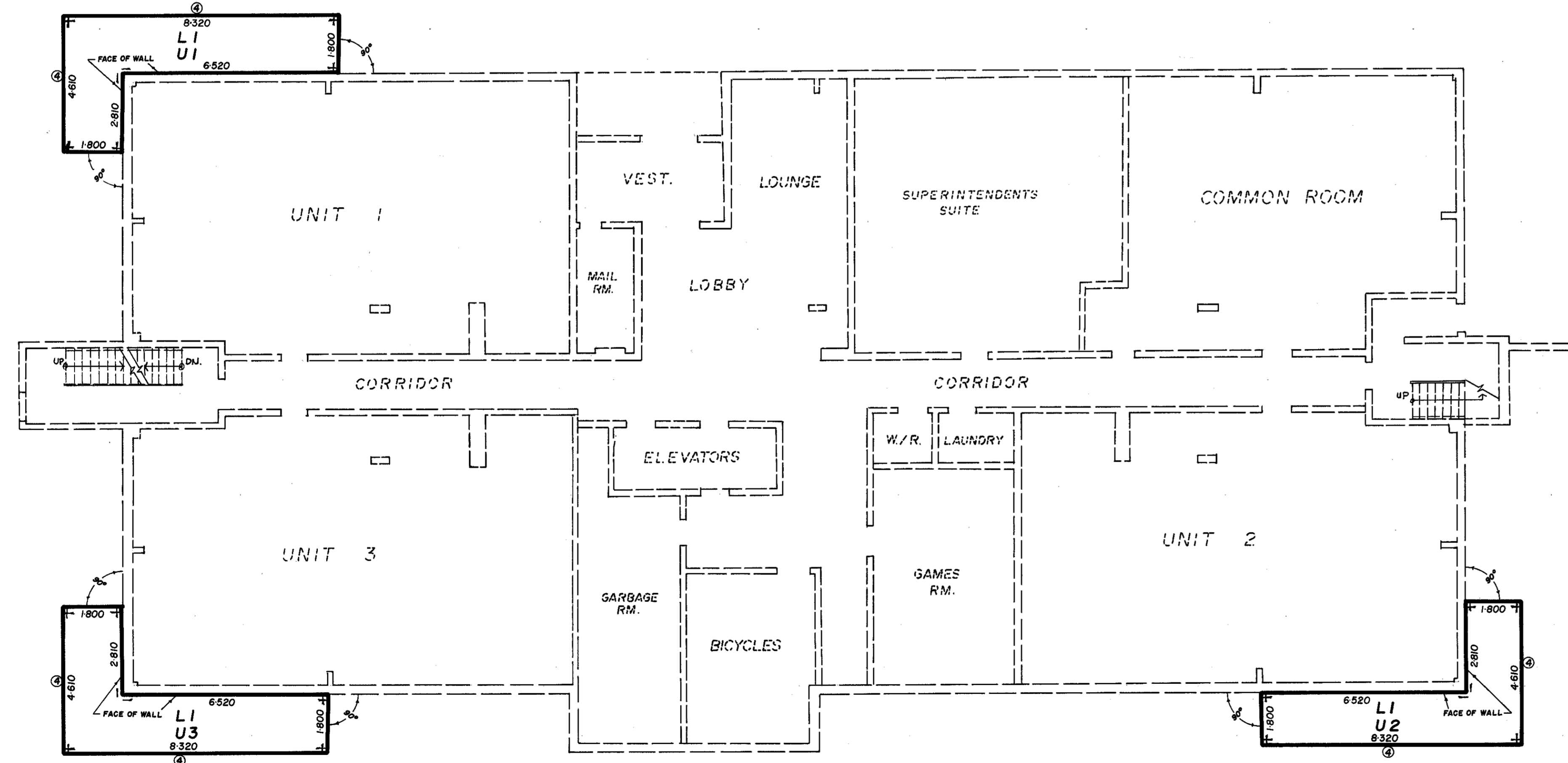
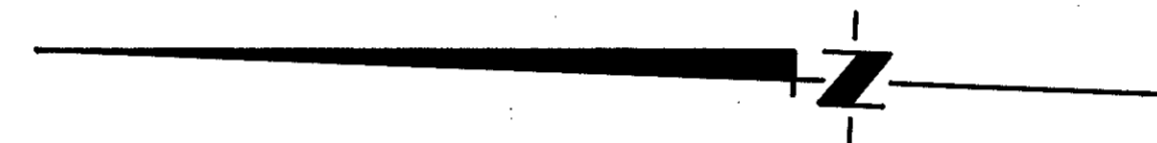
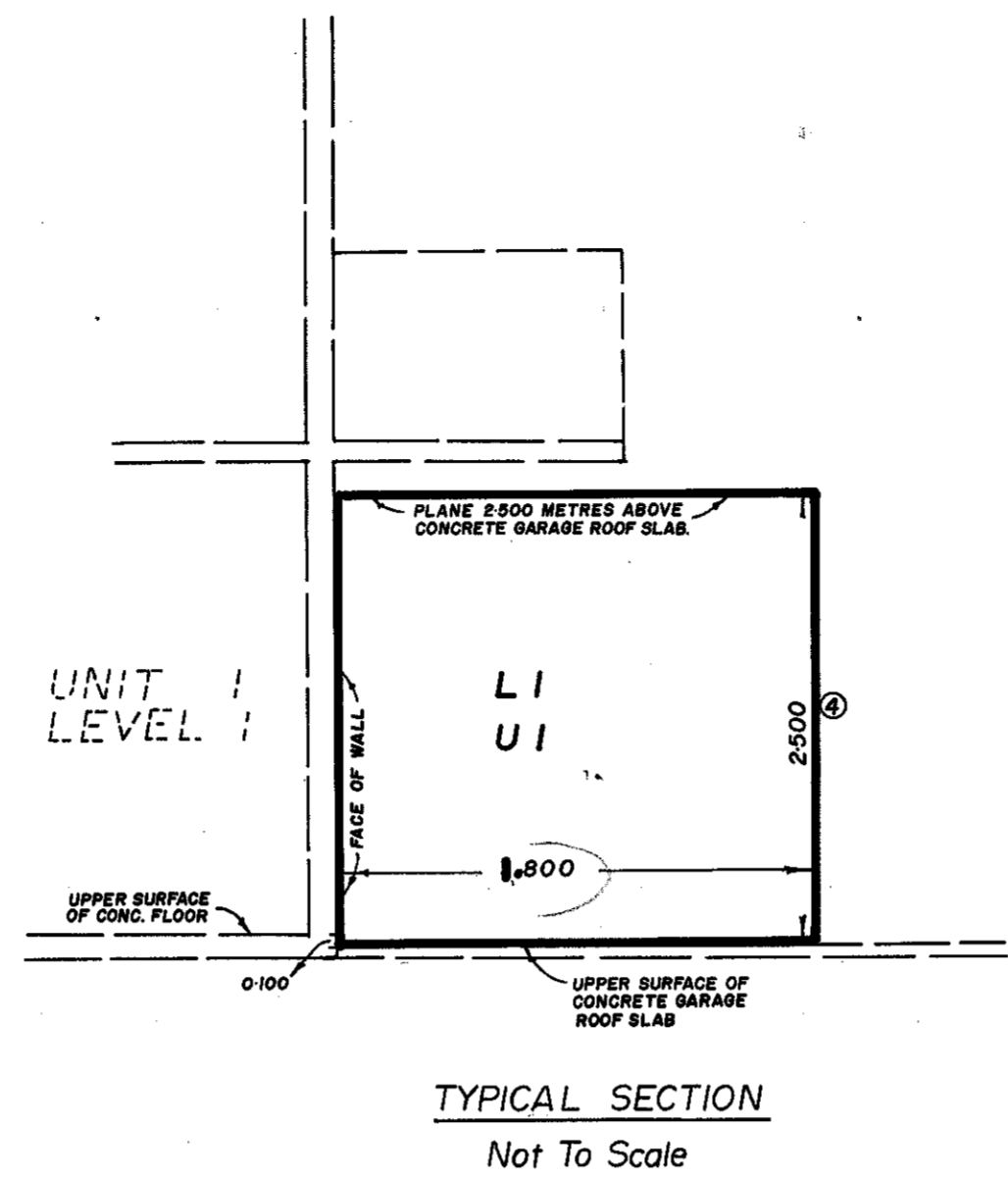
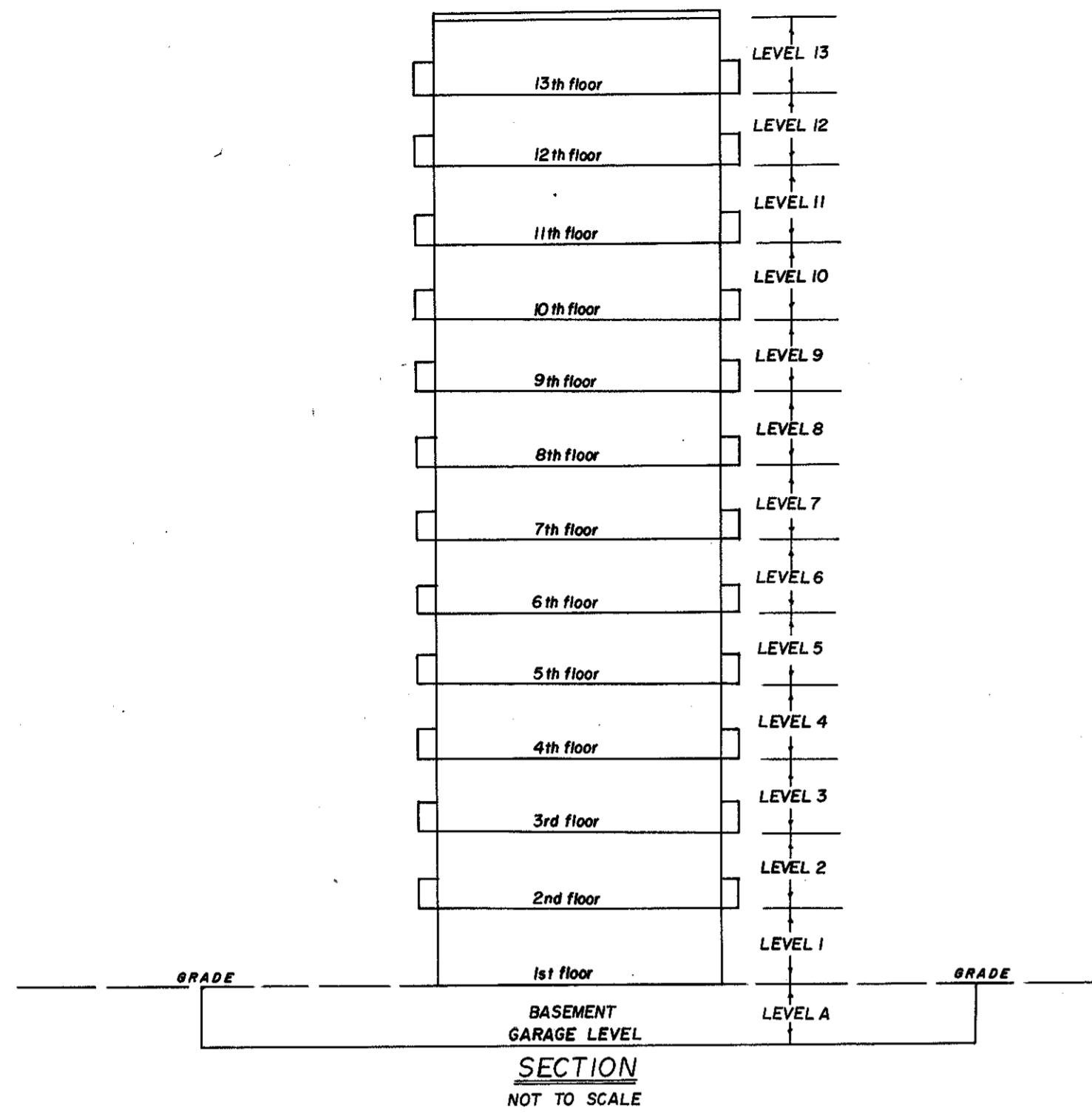
SURVEYOR'S CERTIFICATE

I HEREBY CERTIFY THAT THIS PLAN OF SURVEY ACCURATELY SHOWS THE EXTENT AND LOCATION OF THE EXCLUSIVE USE PORTIONS OF THE COMMON ELEMENT.

DATE 20 Mar. 1987. David T. Humphries, ONTARIO LAND SURVEYOR

NOTES

- 1. PORTIONS SHOWN HEREON WITH THE LETTER "L" FOLLOWED BY A NUMBER AND THE LETTER "U" FOLLOWED BY A NUMBER ARE EXCLUSIVE USE PORTIONS ALLOCATED TO THE UNIT OWNERS AS FOLLOWS: THE LETTER "L" DENOTES THE LEVEL OF THAT PARTICULAR UNIT AND THE LETTER "U" AND NUMBER DENOTES THAT PARTICULAR UNIT. (THUS L1 U1 DESIGNATES THE EXCLUSIVE USE AREA FOR THE OWNER OF UNIT 1 ON LEVEL 1).
2. --- DENOTES BOUNDARIES OF EXCLUSIVE USE PORTIONS OF THE COMMON ELEMENT.
3. - - - - DENOTES BUILDING WALLS & COLUMNS.
4. (C) DENOTES BOUNDARIES OF EXCLUSIVE USE PORTIONS SET AT DISTANCES AS INDICATED.



COND 21 (5)