

*Off-Grid Retreat with  
Stunning Waterfront!*



## PT LT 25 Bobs Lake, Frontenac, ON

# X12256099

\$ \$114,000

🌊 Bobs Lake

📏 0.7 Acres

### Waterfront lot with beautiful westerly views on Bobs Lake.

This lot has 130 feet of waterfrontage and is approximately 0.7 acres in size. The shoreline is level with deep, clean water and the back portion of the lot becomes very rugged and picturesque – an ideal spot for a small off-grid bunkie or simply for camping. There is easy access to the lot from Pine Shores Marina – just a 5 minute boat ride. Bobs Lake is one of the largest lakes in our area with many islands and inlets to explore and great fishing, boating and swimming opportunities. Classic Canadian Shield property that could make a stunning retreat for you and your family.

*Your Total Real Estate Package!*

**Tammy & Heath Gurr**

Royal LePage ProAlliance Realty, Brokerage



[www.gurreathomes.com](http://www.gurreathomes.com)

[info@gurreathomes.com](mailto:info@gurreathomes.com)

**(613) 273-9595**



Not intended to solicit clients under contract. The trademarks REALTOR®, REALTORS® and the REALTOR® logo are controlled by The Canadian Real Estate Association (CREA) and identify real estate professionals who are members of CREA. Used under license. The trademarks MLS®, Multiple Listing Service® and the associated logos are owned by The Canadian Real Estate Association (CREA) and identify the quality of services provided by real estate professionals who are members of CREA. Used under license.



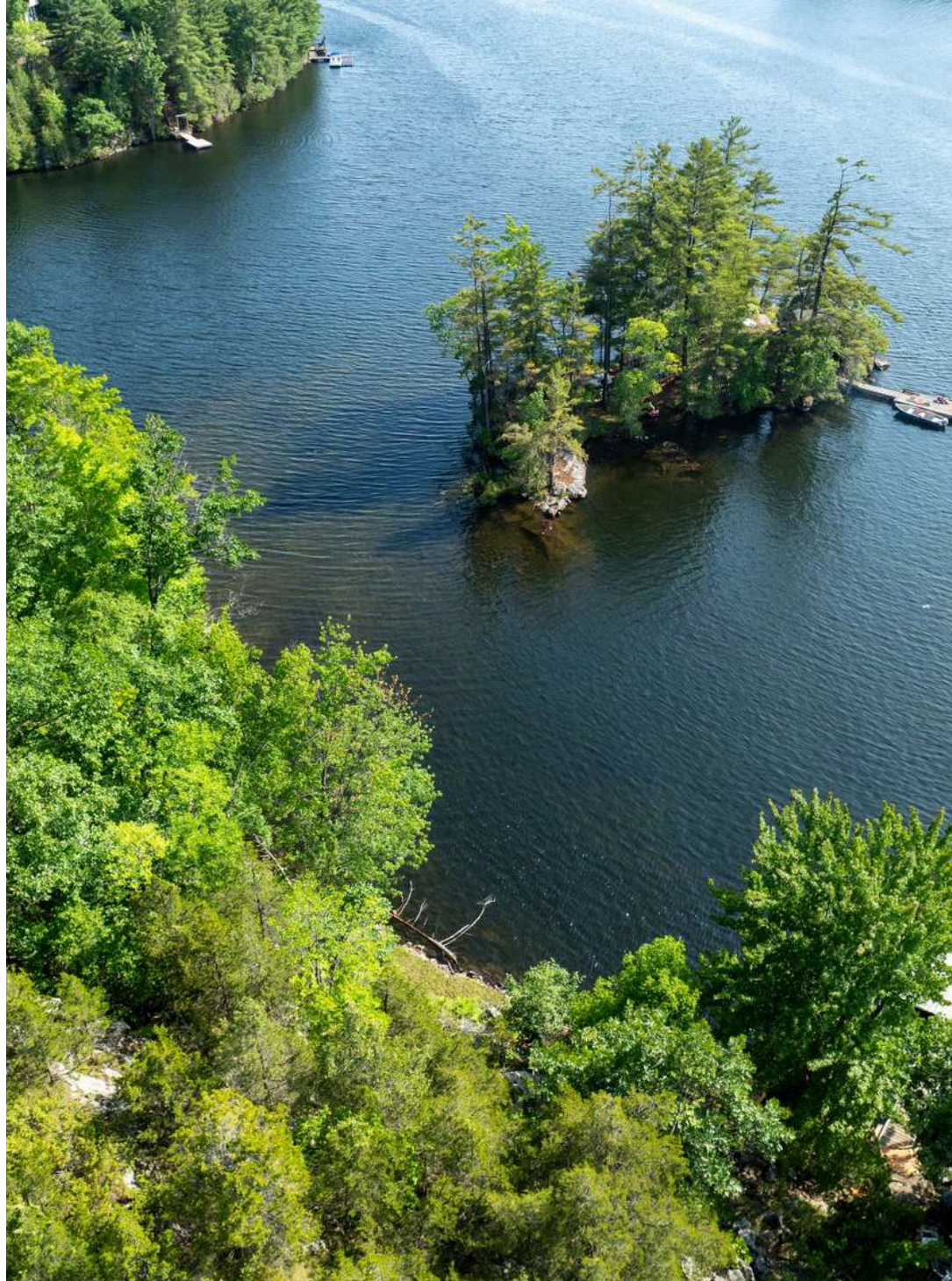
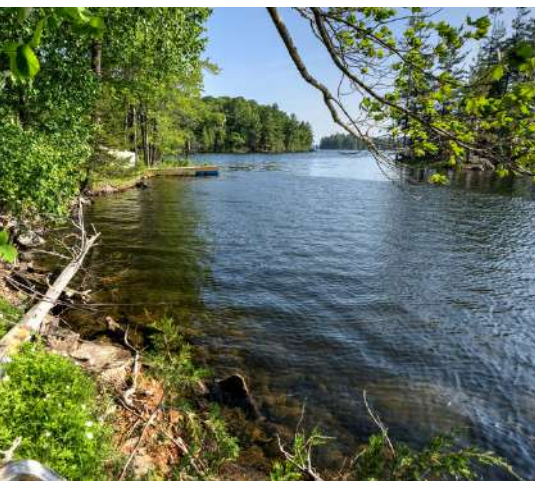


# *Table of Contents*

**PT LT 25 Bobs Lake  
Frontenac, ON**

Features	3
Survey	5
Interactive Links	6
MLS Listing	7
Contact Information	8





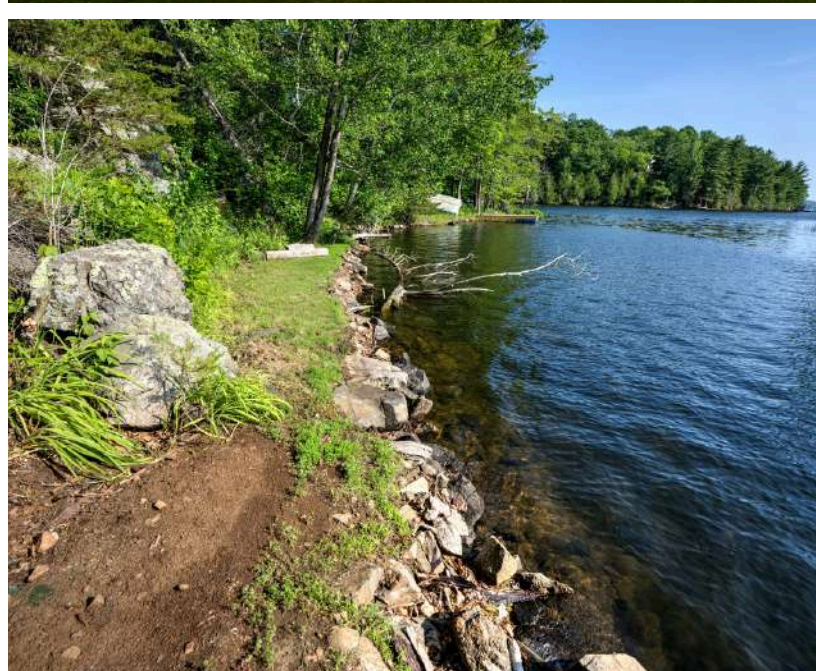
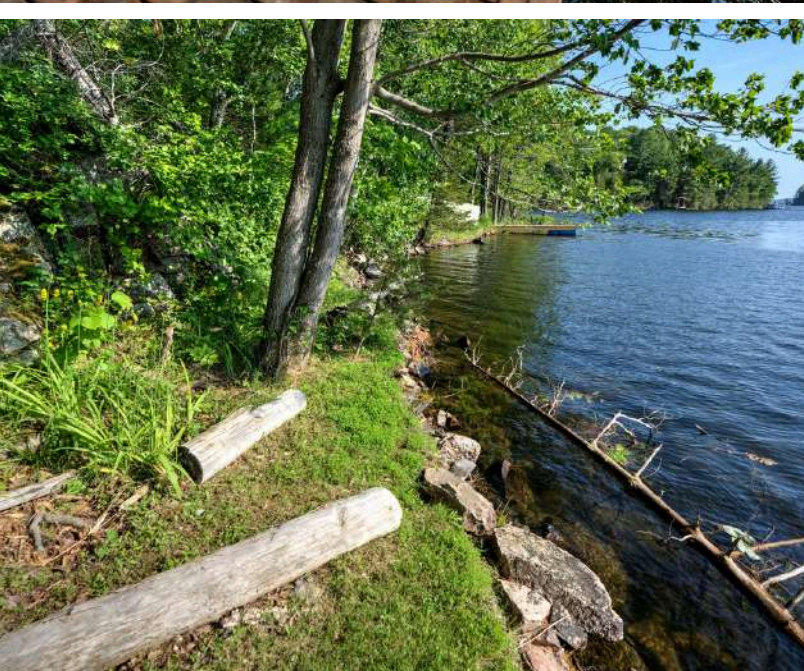
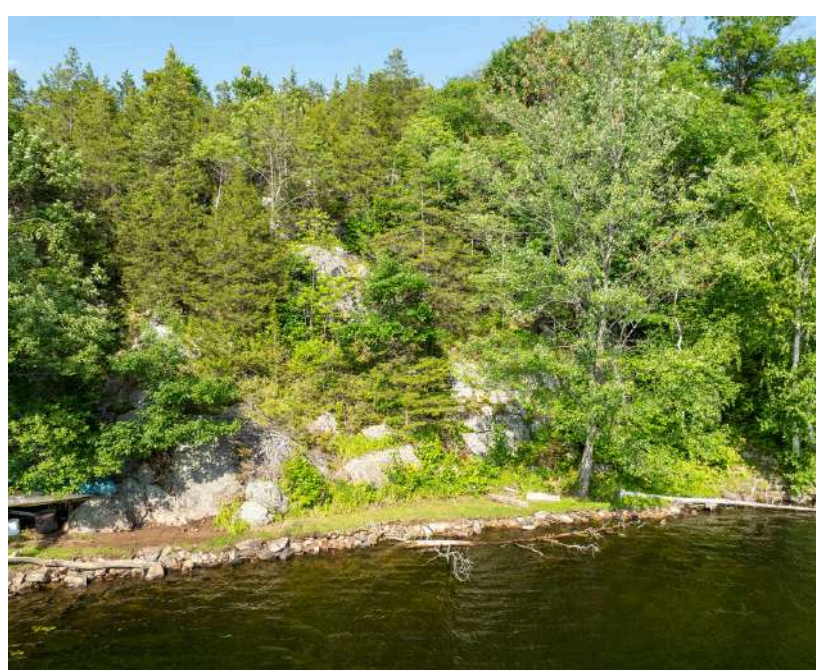
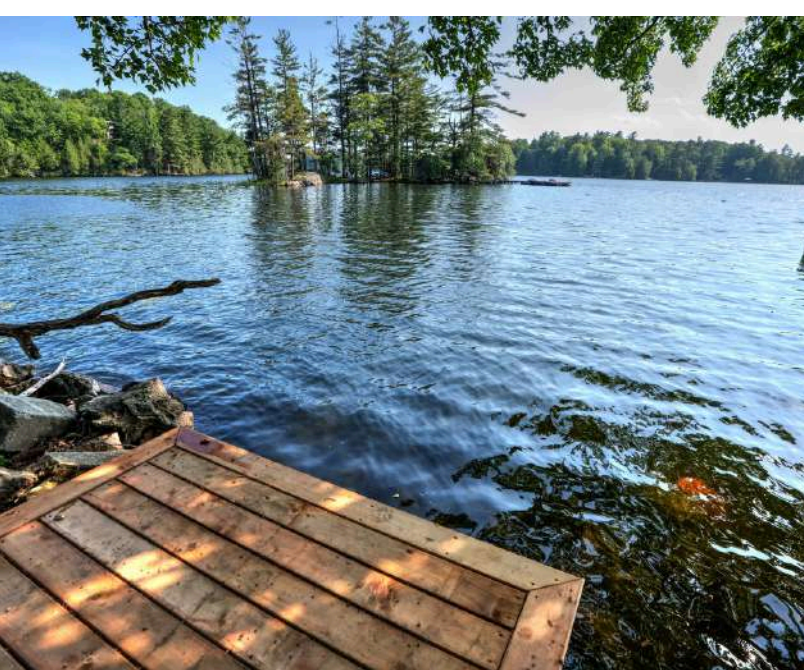
## Features

- Waterfront lot with beautiful westerly views on Bobs Lake. This lot has 130 feet of waterfrontage and is approximately 0.7 acres in size.
- The shoreline is level with deep, clean water and the back portion of the lot becomes very rugged and picturesque – an ideal spot for a small off-grid bunkie or simply for camping.
- There is easy access to the lot from Pine Shores Marina – just a 5 minute boat ride.
- Bobs Lake is one of the largest lakes in our area with many islands and inlets to explore and great fishing, boating and swimming opportunities.
- Classic Canadian Shield property that could make a stunning retreat for you and your family.

## Directions

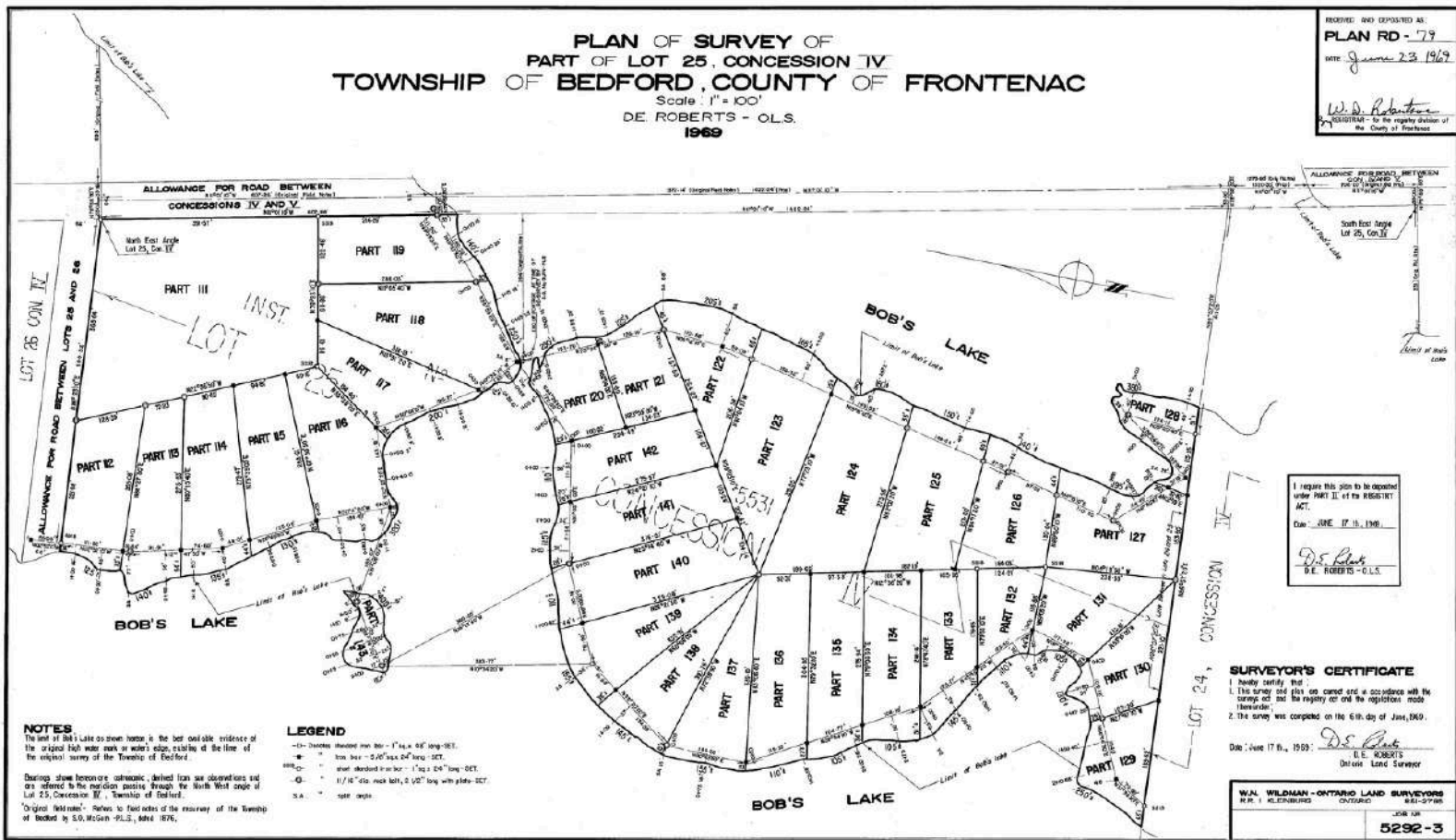
- Hwy. 38 to Bradshaw Rd. follow to right on Pine Shores Lane.







# SURVEY



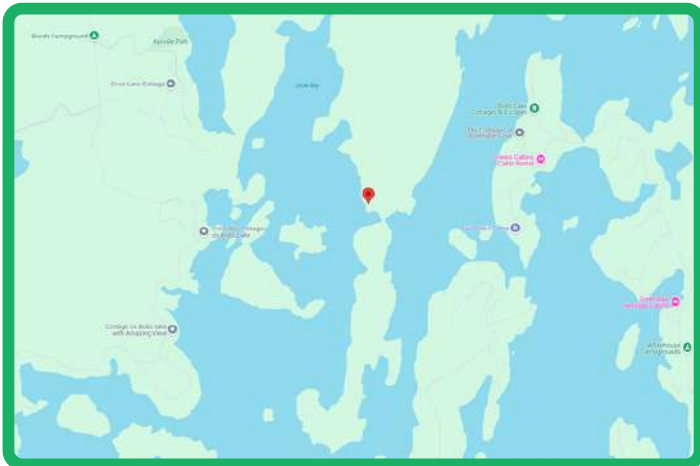
# INTERACTIVE LINKS

## Aerial Video



Scan the QR Code or Visit:  
<https://youtu.be/AQDZOLS8Q2Q>

## Google Map



Scan the QR Code or Visit:  
<https://maps.app.goo.gl/FDZwTgmaPMokABNk9>


## Panorama



Scan the QR Code or Visit:  
<https://360panos.org/panos/PTLT25/>



# MLS LISTING

	<b>PT LT 25 Bobs Lake</b> <b>Frontenac Ontario K0H 2V0</b> Frontenac 47 - Frontenac South Frontenac <b>SPIS:</b> N <b>Taxes:</b> \$829.08/2025 <b>DOM:</b> 0		<b>List: \$114,000 For: Sale</b>												
	Vacant Land <b>Link:</b> <b>Lot:</b> 130 x 323.47 Feet <b>Irreg:</b>	<b>Front On:</b> E <b>Acre:</b> .50-1.99	<b>Rms:</b> <b>Bedrooms:</b> 0 <b>Washrooms:</b> 0												
	<b>Dir/Cross St:</b> Pine Shores Lane / Bobs Lake <b>Directions:</b> Hwy. 38 to Bradshaw Rd. follow to right on Pine Shores Lane.														
<b>MLS#:</b> X12256099 <b>PIN#:</b> 362410141 <b>Possession Remarks:</b> TBD															
<b>Kitchens:</b> <b>Fam Rm:</b> <b>Basement:</b> <b>Fireplace/Stv:</b> <b>Heat:</b> <b>A/C:</b> <b>Central Vac:</b> N <b>Apx Age:</b> <b>Apx Sqft:</b> <b>Assessment:</b> <b>POTL:</b> <b>POTL Mo Fee:</b> <b>Elevator/Lift:</b> <b>Laundry Lev:</b> <b>Phys Hdcap-Eqp:</b>	<b>Exterior:</b> <b>Drive:</b> <b>Gar/Gar Spcs:</b> 0 <b>Drive Park Spcs:</b> <b>Tot Prk Spcs:</b> <b>UFFI:</b> <b>Pool:</b> <b>Energy Cert:</b> <b>Cert Level:</b> <b>GreenPIS:</b> <b>Prop Feat:</b> Waterfront	<b>Zoning:</b> <b>Cable TV:</b> N <b>Hydro:</b> A <b>Gas:</b> N <b>Phone:</b> N <b>Water:</b> <b>Water Supply:</b> <b>Sewer:</b> <b>Spec Desig:</b> Unknown <b>Farm/Agr:</b> Direct <b>Waterfront:</b> <b>Retirement:</b> <b>Oth Struct:</b> Available <b>Survey Type:</b>													
<b>Water Body Name:</b> Bobs Lake <b>Water Body Type:</b> Lake <b>Water Frontage (M):</b> 39.6 <b>Topography:</b> Hilly, Rocky, Wooded/Treed <b>Water Features:</b> Waterfront-Deeded <b>Access to Property:</b> Water Only <b>Docking Type:</b> Private <b>Water View:</b> Direct <b>WaterfrontYN:</b> Y <b>Waterfront:</b> Direct <b>Shoreline:</b> Clean, Deep, Rocky <b>Shoreline Allowance:</b> None <b>Shoreline Exp:</b> W <b>Alternative Power:</b> None <b>Easements/Restrict:</b> Unknown <b>Rural Services:</b> Cell Services <b>Waterfront Accessory Bldgs:</b> Not Applicable															
<table border="1"> <thead> <tr> <th>#</th> <th>Room</th> <th>Level</th> <th>Length (ft)</th> <th>Width (ft)</th> <th>Description</th> </tr> </thead> <tbody> <tr> <td colspan="6"> <b>Client Remks:</b> Waterfront lot with beautiful westerly views on Bobs Lake. This lot has 130 feet of water frontage and is approximately 0.7 acres in size. The shoreline is level with deep, clean water and the back portion of the lot becomes very rugged and picturesque an ideal spot for a small off-grid bunkie or simply for camping. There is easy access to the lot from Pine Shores Marina just a 5 minute boat ride. Bobs Lake is one of the largest lakes in our area with many islands and inlets to explore and great fishing, boating and swimming opportunities. Classic Canadian Shield property that could make a stunning retreat for you and your family.               </td> </tr> </tbody> </table>				#	Room	Level	Length (ft)	Width (ft)	Description	<b>Client Remks:</b> Waterfront lot with beautiful westerly views on Bobs Lake. This lot has 130 feet of water frontage and is approximately 0.7 acres in size. The shoreline is level with deep, clean water and the back portion of the lot becomes very rugged and picturesque an ideal spot for a small off-grid bunkie or simply for camping. There is easy access to the lot from Pine Shores Marina just a 5 minute boat ride. Bobs Lake is one of the largest lakes in our area with many islands and inlets to explore and great fishing, boating and swimming opportunities. Classic Canadian Shield property that could make a stunning retreat for you and your family.					
#	Room	Level	Length (ft)	Width (ft)	Description										
<b>Client Remks:</b> Waterfront lot with beautiful westerly views on Bobs Lake. This lot has 130 feet of water frontage and is approximately 0.7 acres in size. The shoreline is level with deep, clean water and the back portion of the lot becomes very rugged and picturesque an ideal spot for a small off-grid bunkie or simply for camping. There is easy access to the lot from Pine Shores Marina just a 5 minute boat ride. Bobs Lake is one of the largest lakes in our area with many islands and inlets to explore and great fishing, boating and swimming opportunities. Classic Canadian Shield property that could make a stunning retreat for you and your family.															
<b>Extras:</b> <b>Listing Contracted With:</b> ROYAL LEPAGE PROALLIANCE REALTY, BROKERAGE <b>Ph:</b> 613-273-9595															



## Questions? Contact us:

**Tammy & Heath Gurr**

Royal LePage ProAlliance Realty, Brokerage



Westport Office:  
7 Spring Street, P.O. Box 148,  
Westport, ON K0G 1X0

[www.gurreathomes.com](http://www.gurreathomes.com)  
[info@gurreathomes.com](mailto:info@gurreathomes.com)  
(613) 273-9595

Kingston Office:  
640 Cataraqui Woods Drive  
Kingston, ON K7P 2Y5

*Your Total Real Estate Package!*