

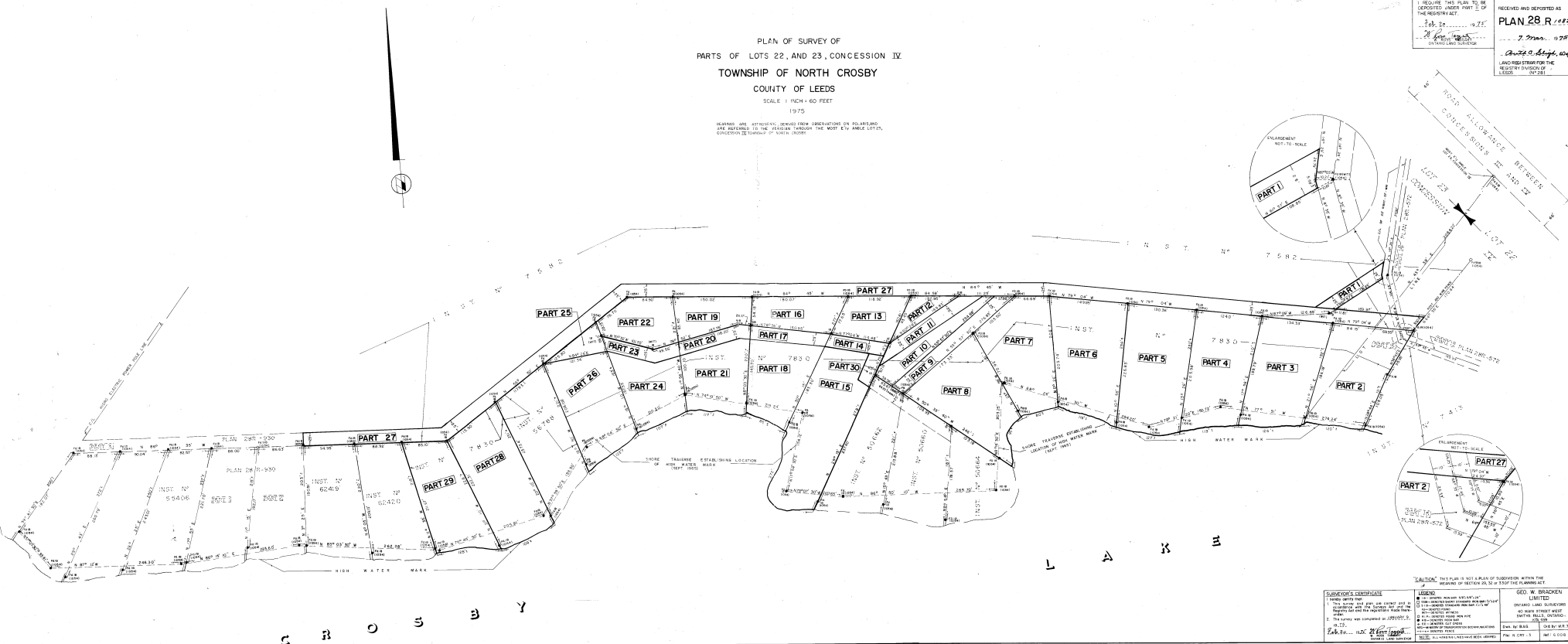
PLAN OF SURVEY OF  
PARTS OF LOTS 22, AND 23, CONCESSION IV,  
TOWNSHIP OF NORTH CROSBY  
COUNTY OF LEEDS  
SCALE 1 INCH = 60 FEET  
1975

BEARING AND DISTANCE DERIVED FROM OPERATIONS ON POLAROID  
AND RECORDED IN THE JOURNAL THROUGH THE WEST 4TH ANGULAR LOT, 1  
CONCESSION IV, TOWNSHIP OF NORTH CROSBY

I REQUIRE THIS PLAN TO BE  
RECORDED UNDER PART II OF  
THE REGISTRY ACT  
Feb 28 1975  
ON THIS LAND SURVEY

RECEIVED AND DEPOSITED AS  
PLAN 28 R 1975

7. 7. 75  
ON THIS LAND SURVEY  
LAND REGISTRATION FOR THE  
REGISTERED SURVEYOR  
LEEDS



SURVEYOR'S CERTIFICATE		LEGEND		GEO. W. BRACKEN LIMITED	
1. This survey and plan are correct and true to the best of my knowledge and belief.		A. 1/4 SECTION 10, TOWNSHIP 10 N., RANGE 10 E., DISTRICT 10, COUNTY OF LEEDS.		ONCE LINED SURVEYORS	
2. The survey was completed on 1975 FEB 28.		B. 1/4 SECTION 10, TOWNSHIP 10 N., RANGE 10 E., DISTRICT 10, COUNTY OF LEEDS.		ON HAD STAKE MARK	
3. The survey was completed on 1975 FEB 28.		C. 1/4 SECTION 10, TOWNSHIP 10 N., RANGE 10 E., DISTRICT 10, COUNTY OF LEEDS.		ON HAD STAKE MARK	
4. The survey was completed on 1975 FEB 28.		D. 1/4 SECTION 10, TOWNSHIP 10 N., RANGE 10 E., DISTRICT 10, COUNTY OF LEEDS.		ON HAD STAKE MARK	
5. The survey was completed on 1975 FEB 28.		E. 1/4 SECTION 10, TOWNSHIP 10 N., RANGE 10 E., DISTRICT 10, COUNTY OF LEEDS.		ON HAD STAKE MARK	
6. The survey was completed on 1975 FEB 28.		F. 1/4 SECTION 10, TOWNSHIP 10 N., RANGE 10 E., DISTRICT 10, COUNTY OF LEEDS.		ON HAD STAKE MARK	
7. The survey was completed on 1975 FEB 28.		G. 1/4 SECTION 10, TOWNSHIP 10 N., RANGE 10 E., DISTRICT 10, COUNTY OF LEEDS.		ON HAD STAKE MARK	
8. The survey was completed on 1975 FEB 28.		H. 1/4 SECTION 10, TOWNSHIP 10 N., RANGE 10 E., DISTRICT 10, COUNTY OF LEEDS.		ON HAD STAKE MARK	
9. The survey was completed on 1975 FEB 28.		I. 1/4 SECTION 10, TOWNSHIP 10 N., RANGE 10 E., DISTRICT 10, COUNTY OF LEEDS.		ON HAD STAKE MARK	
10. The survey was completed on 1975 FEB 28.		J. 1/4 SECTION 10, TOWNSHIP 10 N., RANGE 10 E., DISTRICT 10, COUNTY OF LEEDS.		ON HAD STAKE MARK	
11. The survey was completed on 1975 FEB 28.		K. 1/4 SECTION 10, TOWNSHIP 10 N., RANGE 10 E., DISTRICT 10, COUNTY OF LEEDS.		ON HAD STAKE MARK	
12. The survey was completed on 1975 FEB 28.		L. 1/4 SECTION 10, TOWNSHIP 10 N., RANGE 10 E., DISTRICT 10, COUNTY OF LEEDS.		ON HAD STAKE MARK	
13. The survey was completed on 1975 FEB 28.		M. 1/4 SECTION 10, TOWNSHIP 10 N., RANGE 10 E., DISTRICT 10, COUNTY OF LEEDS.		ON HAD STAKE MARK	
14. The survey was completed on 1975 FEB 28.		N. 1/4 SECTION 10, TOWNSHIP 10 N., RANGE 10 E., DISTRICT 10, COUNTY OF LEEDS.		ON HAD STAKE MARK	
15. The survey was completed on 1975 FEB 28.		O. 1/4 SECTION 10, TOWNSHIP 10 N., RANGE 10 E., DISTRICT 10, COUNTY OF LEEDS.		ON HAD STAKE MARK	
16. The survey was completed on 1975 FEB 28.		P. 1/4 SECTION 10, TOWNSHIP 10 N., RANGE 10 E., DISTRICT 10, COUNTY OF LEEDS.		ON HAD STAKE MARK	
17. The survey was completed on 1975 FEB 28.		Q. 1/4 SECTION 10, TOWNSHIP 10 N., RANGE 10 E., DISTRICT 10, COUNTY OF LEEDS.		ON HAD STAKE MARK	
18. The survey was completed on 1975 FEB 28.		R. 1/4 SECTION 10, TOWNSHIP 10 N., RANGE 10 E., DISTRICT 10, COUNTY OF LEEDS.		ON HAD STAKE MARK	
19. The survey was completed on 1975 FEB 28.		S. 1/4 SECTION 10, TOWNSHIP 10 N., RANGE 10 E., DISTRICT 10, COUNTY OF LEEDS.		ON HAD STAKE MARK	
20. The survey was completed on 1975 FEB 28.		T. 1/4 SECTION 10, TOWNSHIP 10 N., RANGE 10 E., DISTRICT 10, COUNTY OF LEEDS.		ON HAD STAKE MARK	
21. The survey was completed on 1975 FEB 28.		U. 1/4 SECTION 10, TOWNSHIP 10 N., RANGE 10 E., DISTRICT 10, COUNTY OF LEEDS.		ON HAD STAKE MARK	
22. The survey was completed on 1975 FEB 28.		V. 1/4 SECTION 10, TOWNSHIP 10 N., RANGE 10 E., DISTRICT 10, COUNTY OF LEEDS.		ON HAD STAKE MARK	
23. The survey was completed on 1975 FEB 28.		W. 1/4 SECTION 10, TOWNSHIP 10 N., RANGE 10 E., DISTRICT 10, COUNTY OF LEEDS.		ON HAD STAKE MARK	
24. The survey was completed on 1975 FEB 28.		X. 1/4 SECTION 10, TOWNSHIP 10 N., RANGE 10 E., DISTRICT 10, COUNTY OF LEEDS.		ON HAD STAKE MARK	
25. The survey was completed on 1975 FEB 28.		Y. 1/4 SECTION 10, TOWNSHIP 10 N., RANGE 10 E., DISTRICT 10, COUNTY OF LEEDS.		ON HAD STAKE MARK	
26. The survey was completed on 1975 FEB 28.		Z. 1/4 SECTION 10, TOWNSHIP 10 N., RANGE 10 E., DISTRICT 10, COUNTY OF LEEDS.		ON HAD STAKE MARK	
27. The survey was completed on 1975 FEB 28.		AA. 1/4 SECTION 10, TOWNSHIP 10 N., RANGE 10 E., DISTRICT 10, COUNTY OF LEEDS.		ON HAD STAKE MARK	
28. The survey was completed on 1975 FEB 28.		BB. 1/4 SECTION 10, TOWNSHIP 10 N., RANGE 10 E., DISTRICT 10, COUNTY OF LEEDS.		ON HAD STAKE MARK	
29. The survey was completed on 1975 FEB 28.		CC. 1/4 SECTION 10, TOWNSHIP 10 N., RANGE 10 E., DISTRICT 10, COUNTY OF LEEDS.		ON HAD STAKE MARK	
30. The survey was completed on 1975 FEB 28.		DD. 1/4 SECTION 10, TOWNSHIP 10 N., RANGE 10 E., DISTRICT 10, COUNTY OF LEEDS.		ON HAD STAKE MARK	