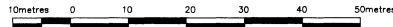


PLAN of SURVEY of  
PART of LOT 9, CONCESSION 10  
Geographic Township of Bedford  
TOWNSHIP of SOUTH FRONTENAC  
COUNTY of FRONTENAC

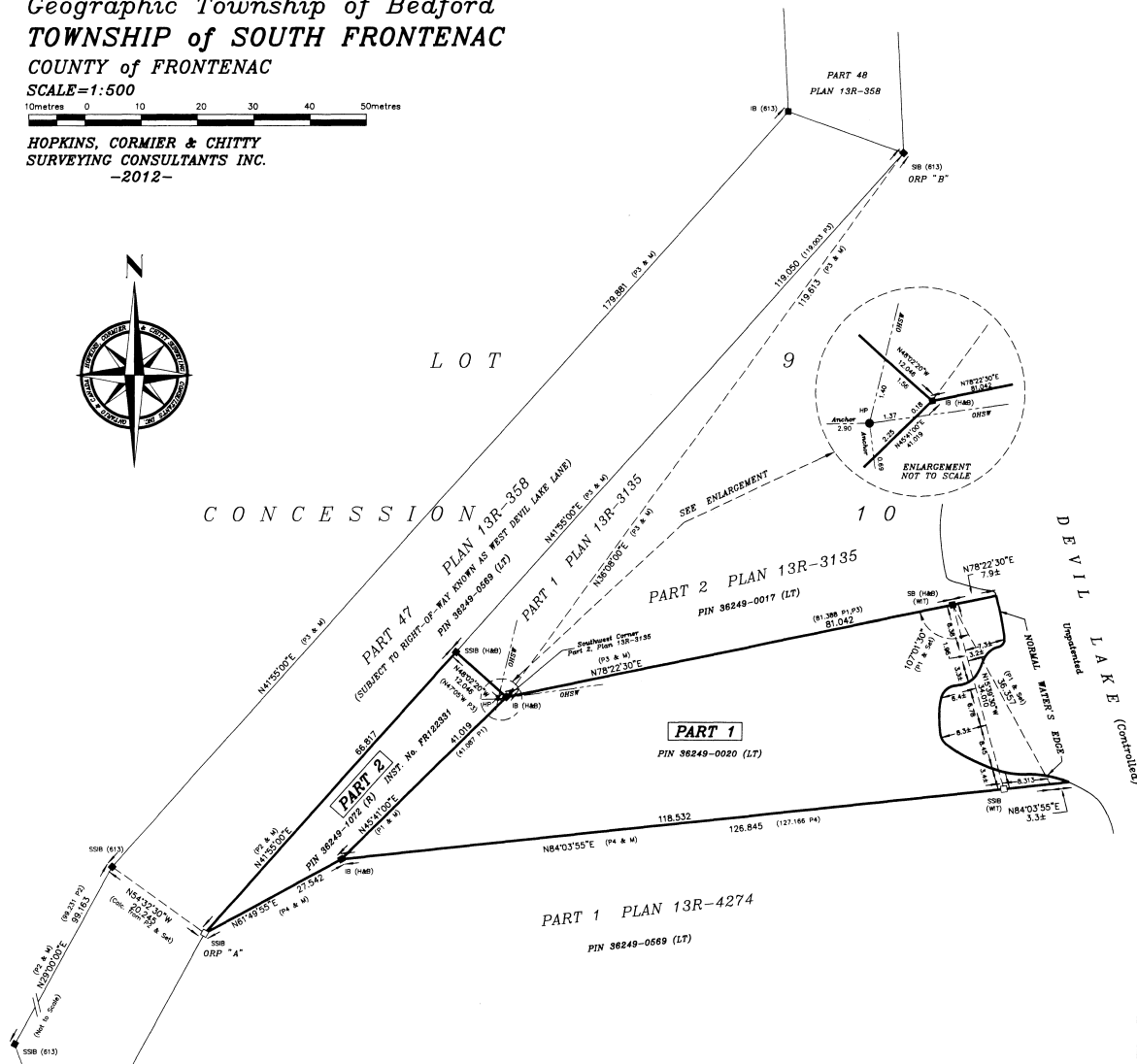
SCALE=1:500



HOPKINS, CORMIER & CHITTY  
SURVEYING CONSULTANTS INC.  
-2012-



LOT  
CONCESSION



I REQUIRE THIS PLAN TO  
BE DEPOSITED UNDER THE  
REGISTRY ACT AND THE LAND  
TITLES ACT.

PLAN 13R-20434

RECEIVED AND DEPOSITED

DATE June 12, 2012

Jessy Kirkham  
SIGNATURE

REPRESENTATIVE FOR THE  
LAND REGISTRAR FOR THE  
LAND TITLES DIVISION OF  
FRONTENAC (No. 13)

DATE: June 12, 2012

PHIL W. CHITTY  
ONTARIO LAND SURVEYOR

SCHEDULE (Land Titles)

PART	LOT	CON.	PIN No.
1	Part of 9	10	36249-0020 (LT)

PART 1 COMPRISES ALL OF PIN 36249-0020 (LT)

SCHEDULE (Registry)

PART	LOT	CON.	INST. No.	PIN No.
2	Part of 9	10	Part of FR122331	36249-1072 (R)

PART 2 COMPRISES ALL OF PIN 36249-1072 (R)

OBSERVED REFERENCE POINTS (ORPs): UTM ZONE 18, NAD83 (CSRS) (1997.0)  
COORDINATES TO RURAL ACCURACY PER SEC. 14 (2) OF O.R.G. 216/10

POINT ID	NORTHING	EASTING
ORP "A"	4938082.17	382314.01
ORP "B"	4938820.45	382438.14

COORDINATES CANNOT, IN THEMSELVES BE USED TO  
RE-ESTABLISH CORNERS OR BOUNDARIES SHOWN ON THIS PLAN.

FOR BEARING COMPARISONS, A ROTATION OF 1°07'30" CLOCKWISE WAS  
APPLIED TO BEARINGS ON PLANS 13R-358 AND 13R-3135 AND A ROTATION  
OF 0°58'00" CLOCKWISE WAS APPLIED TO BEARINGS ON PLAN 13R-4274

DISTANCES ARE GROUND AND CAN BE CONVERTED TO GRID BY  
MULTIPLYING BY THE COMBINED SCALE FACTOR OF 0.9997518

BEARINGS ARE UTM GRID, DERIVED FROM OBSERVED REFERENCE POINTS  
"A" AND "B", BY REAL TIME NETWORK (RTN) OBSERVATIONS.

UTM ZONE 18, NAD83 (CSRS) (1997.0)

DISTANCES AND COORDINATES SHOWN ON THIS PLAN ARE IN METRES  
AND CAN BE CONVERTED TO FEET BY DIVIDING BY 0.3048

LEGEND:

- SS18'S PLANTED DUE TO INSUFFICIENT OVERBURDEN
- CS - denotes Planted Survey Monument
- FS - denotes Found Survey Monument
- SB - Standard Iron Bar
- SS1B - Short Standard Iron Bar
- IB - Iron Bar
- IRB - Iron Bar (round)
- RB - Rock Bar
- RP - Rock Post
- RPL - Rock Plug
- (WIT) - Witness
- (M) - Measured
- (R.P.) - Registered Plan
- (HP) - Hydro Pole
- ORP - Observed Reference Point
- (P1) - Plan by D.T. Humphries O.L.S. Mar. 18, 1986
- (P2) - Plan 13R-358
- (P3) - Plan 13R-3135
- (P4) - Plan 13R-4274
- (E13) - R.F. Maclestone O.L.S.
- (H&B) - Humphries & Burgham Ltd. O.L.S.
- ORSW - Overhead Service Wires

SURVEYOR'S CERTIFICATE:

I CERTIFY THAT:

1. This Survey and Plan are correct and in accordance  
with the SURVEYS ACT, the SURVEYORS ACT, the LAND  
TITLES ACT and the REGISTRY ACT and the REGULATIONS  
made under them.

2. The SURVEY was completed on the 7th day of  
October 2011

HOPKINS, CORMIER & CHITTY SURVEYING

DATE: June 12, 2012

PHIL W. CHITTY O.L.S.

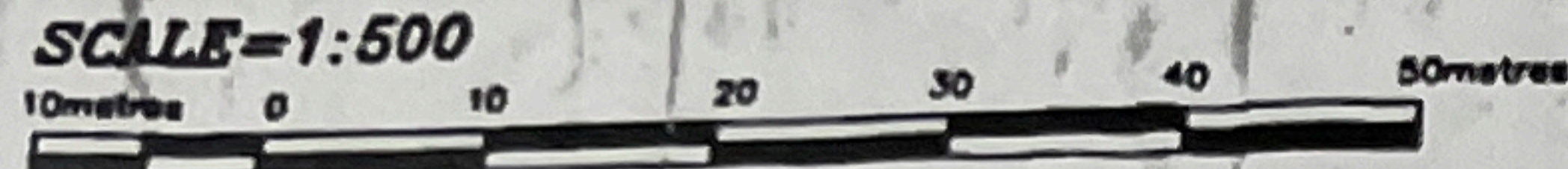
Party Chief: SF Instrument: SF Checked By: EPF Plan By: EPF



HOPKINS, CORMIER & CHITTY  
SURVEYING CONSULTANTS INC.  
Ontario & Canada Land Surveyors  
www.hopkinscottmiller.com

634-636 NORRIS COURT PROJECT No. 2011-244  
KINGSTON, ONTARIO K7P-2R9 Lot 9, Concession 10  
Tel: (613) 384-9298 Township of Bedford  
Fax: (613) 384-3213

PLAN of SURVEY of  
PART of LOT 9, CONCESSION 10  
Geographic Township of Bedford  
TOWNSHIP of SOUTH FRONTENAC  
COUNTY of FRONTENAC



HOPKINS, CORMIER & CHITTY  
SURVEYING CONSULTANTS INC.  
-2012-



PROPERTY OF THE  
REGISTRY OFFICE

I REQUIRE THIS PLAN TO  
BE DEPOSITED UNDER THE  
REGISTRY ACT AND THE LAND  
TITLES ACT.

PLAN 13R-20434

RECEIVED AND DEPOSITED

DATE June 12, 2012

*Sherry Hinkley*  
SIGNATURE

REPRESENTATIVE FOR THE  
LAND REGISTRAR FOR THE  
LAND TITLES DIVISION OF  
FRONTENAC (No. 13)

DATE: June 12, 2012

PHIL W. CHITTY  
ONTARIO LAND SURVEYOR

SCHEDULE (Land Titles)

PART	LOT	CON.	PIN No.
1	Part of 9	10	36249-0020 (LT)

PART 1 COMPRISES ALL OF PIN 36249-0020 (LT)

SCHEDULE (Registry)

PART	LOT	CON.	INST. No.	PIN No.
2	Part of 9	10	Part of FRI22331	36249-1072 (R)

PART 2 COMPRISES ALL OF PIN 36249-1072 (R)

OBSERVED REFERENCE POINTS (ORP): UTM ZONE 18, NAD83 (CSRS) (1997.0)  
COORDINATES TO RURAL ACCURACY PER SEC. 14 (2) OF O. REG. 216/10

POINT ID	NORTHING	EASTING
ORP "A"	4938082.17	382314.01
ORP "B"	4938220.45	382438.14

COORDINATES CANNOT, IN THEMSELVES BE USED TO  
RE-ESTABLISH CORNERS OR BOUNDARIES SHOWN ON THIS PLAN.

FOR BEARING COMPARISONS, A ROTATION OF 1°07'30" CLOCKWISE WAS  
APPLIED TO BEARINGS ON PLANS 13R-358 AND 13R-3135 AND A ROTATION  
OF 0°58'00" CLOCKWISE WAS APPLIED TO BEARINGS ON PLAN 13R-4274

DISTANCES ARE GROUND AND CAN BE CONVERTED TO GRID BY  
MULTIPLYING BY THE COMBINED SCALE FACTOR OF 0.9997519

BEARINGS ARE UTM GRID, DERIVED FROM OBSERVED REFERENCE POINTS  
"A" AND "B", BY REAL TIME NETWORK (RTN) OBSERVATIONS,  
UTM ZONE 18, NAD83 (CSRS) (1997.0).

DISTANCES AND COORDINATES SHOWN ON THIS PLAN ARE IN METRES  
AND CAN BE CONVERTED TO FEET BY DIVIDING BY 0.3048

LEGEND:

SSIB'S PLANTED DUE TO INSUFFICIENT OVERBURDEN

- Station
- Planted Survey Monument
- Found Survey Monument
- SSIB Standard Iron Bar
- IB Short Standard Iron Bar
- IB Iron Bar
- IBS Iron Bar (round)
- RB Rock Bar
- RP Rock Post
- RPL Rock Plug
- (WIT) Witness
- (M) Measured
- (R.P.) Registered Plan
- (HP) Hydro Pole
- ORP Observed Reference Point
- (P1) Plan by D.T. Humphries O.L.S. Mar. 18, 1988
- (P2) Plan 13R-358
- (P3) Plan 13R-3135
- (P4) Plan 13R-4274
- (S13) R.F. MacMillan O.L.S.
- (H&B) Humphries & Burgham Ltd. O.L.S.
- ONSV Overhead Service Wires

PROPERTY OF THE  
REGISTRY OFFICE

SURVEYOR'S CERTIFICATE:

I CERTIFY THAT:

1. This Survey and Plan are correct and in accordance  
with the SURVEYS ACT, the SURVEYORS ACT, the LAND  
TITLES ACT and the REGISTRY ACT and the REGULATIONS  
made under them.

2. The SURVEY was completed on the 12th day of  
October 2011

HOPKINS, CORMIER & CHITTY SURVEYING

DATE: June 12, 2012

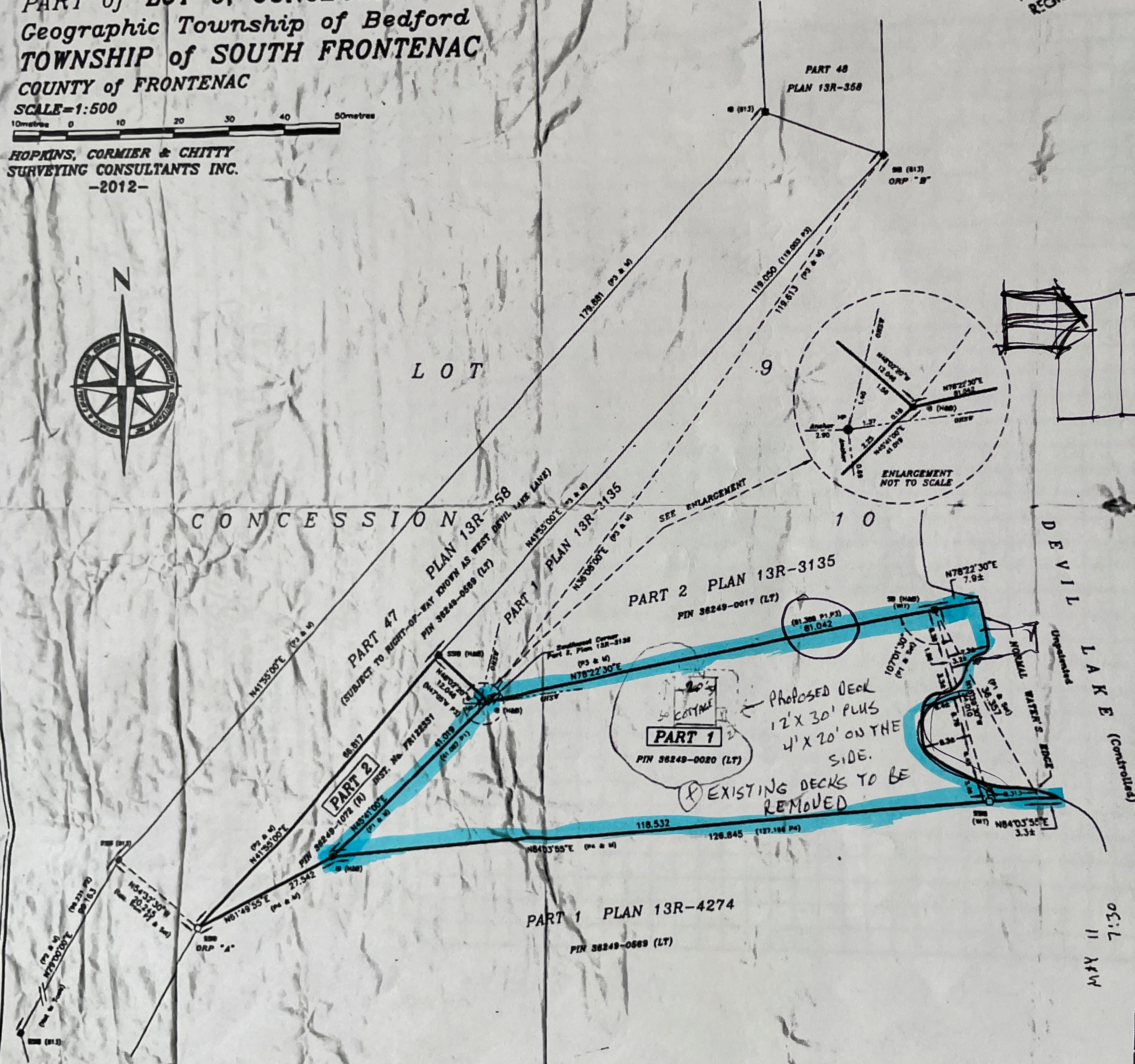
*Phil W. Chitty*  
PHIL W. CHITTY O.L.S.

May 11 7:30

CONCESSION 10

LOT 9

DEVIL LAKE (Contractors)



PART 2 PLAN 13R-3135  
PIN 36249-0017 (LT)

Proposed Deck  
12' x 30' PLUS  
4' x 20' ON THE  
SIDE.  
EXISTING DECKS TO BE  
REMOVED

PART 2  
PIN 36249-1072 (R)

PART 1  
PIN 36249-0020 (LT)

PART 1 PLAN 13R-4274  
PIN 36249-0689 (LT)

PART 48  
PLAN 13R-358

PART 47  
PLAN 13R-358  
(SUBJECT TO RIGHT-OF-WAY PROPN AS WEST DEVIL LAKE (LANDS)  
PIN 36249-0689 (LT)

Part of 9, Concession 10, Township of Bedford

**HOPKINS, CORMIER & CHITTY**  
SURVEYING CONSULTANTS INC.  
Ontario & Canada Land Surveyors  
www.hopkinscormier.com

634-636 MORRIS COURT  
KINGSTON, ONTARIO K7P-2R9  
Tel (613) 394-8266  
Fax (613) 394-3513

PROJECT No. 2011-344  
Lot 9, Concession 10  
Township of Bedford