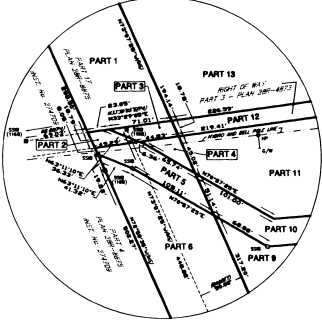


DETAIL 'A'
NOT TO SCALE



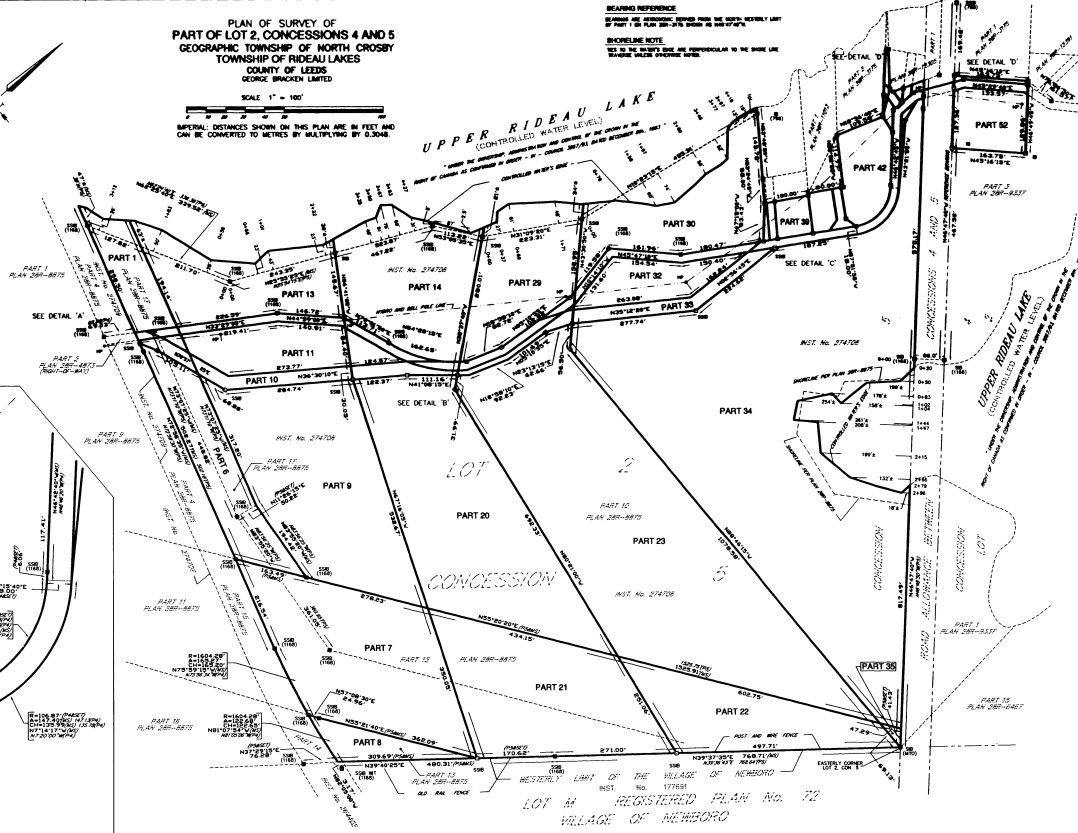
PLAN OF SURVEY OF
PART OF LOT 2, CONCESSIONS 4 AND 5
GEOGRAPHIC TOWNSHIP OF NORTH CROSBY
TOWNSHIP OF RIDEAU LAKES
COUNTY OF LEEDS
GEORGE BRACKEN LIMITED

SCALE 1" = 100'

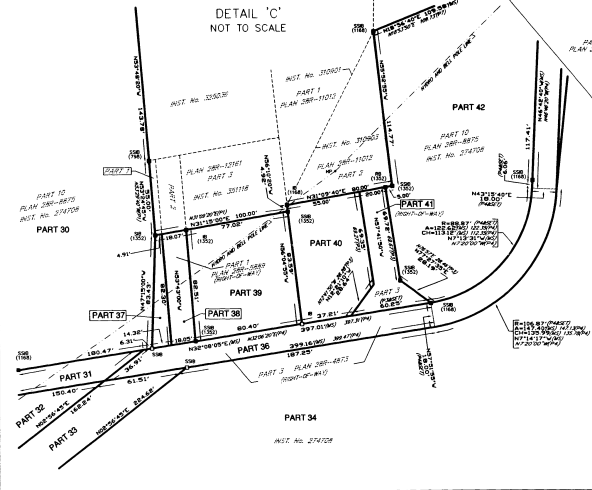
IMPERIAL DISTANCES SHOWN ON THIS PLAN ARE IN FEET AND
CAN BE CONVERTED TO METRES BY MULTIPLYING BY 0.3048

BOUNDARY REFERENCE
THE BOUNDARY BETWEEN THIS AND THE WESTERN HALF OF
PART 1 OF PLAN 288-8875 IS SHOWN BY A DOTTED LINE.

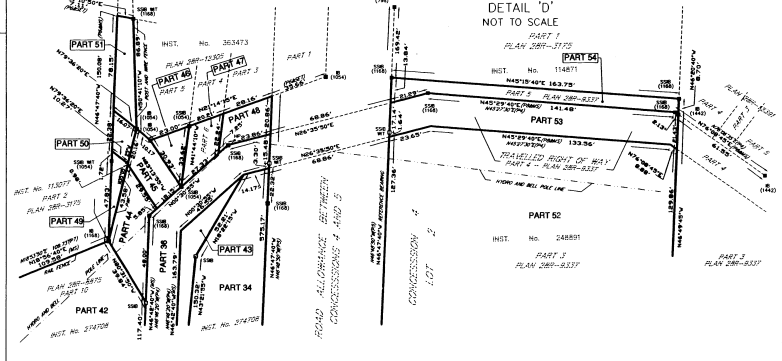
SHORELINE NOTE
THE SHORELINE IS AS SHOWN AND IS SUBJECT TO THE TIDE LINE
AS SHOWN ON THE CHARTERED SURVEY.



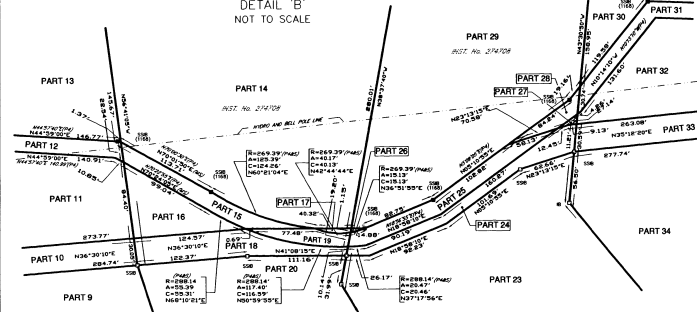
DETAIL 'C'
NOT TO SCALE



DETAIL 'D'
NOT TO SCALE



DETAIL 'B'
NOT TO SCALE



REQUIRE THE PLAN TO BE
RECORDED UNDER THE
REGISTRY ACT.

DATE: June 22, 2006

DATE: June 22, 2006

GEORGE H. BRACKEN
CHARTERED LAND SURVEYOR

LAURENCE J. BRACKEN
CHARTERED LAND SURVEYOR

PLAN 288-12 (L.S.)
RECORDED AND REPRODUCED.

SERIAL	DESCRIPTION	AREA
1		0.877 Ac. ±
2		0.877 Ac. ±
3		0.877 Ac. ±
4		0.877 Ac. ±
5		0.877 Ac. ±
6		1.108 Ac. ±
7		0.877 Ac. ±
8		0.877 Ac. ±
9		0.877 Ac. ±
10		0.877 Ac. ±
11		0.877 Ac. ±
12		0.877 Ac. ±
13		0.877 Ac. ±
14		0.877 Ac. ±
15		0.877 Ac. ±
16		0.877 Ac. ±
17		0.877 Ac. ±
18		0.877 Ac. ±
19		0.877 Ac. ±
20		0.877 Ac. ±
21		0.877 Ac. ±
22		0.877 Ac. ±
23		0.877 Ac. ±
24		0.877 Ac. ±
25		0.877 Ac. ±
26		0.877 Ac. ±
27		0.877 Ac. ±
28		0.877 Ac. ±
29		0.877 Ac. ±
30		0.877 Ac. ±
31		0.877 Ac. ±
32		0.877 Ac. ±
33		0.877 Ac. ±
34		0.877 Ac. ±
35		0.877 Ac. ±
36		0.877 Ac. ±
37		0.877 Ac. ±
38		0.877 Ac. ±
39		0.877 Ac. ±
40		0.877 Ac. ±
41		0.877 Ac. ±
42		0.877 Ac. ±
43		0.877 Ac. ±
44		0.877 Ac. ±
45		0.877 Ac. ±
46		0.877 Ac. ±
47		0.877 Ac. ±
48		0.877 Ac. ±
49		0.877 Ac. ±
50		0.877 Ac. ±
51		0.877 Ac. ±
52		0.877 Ac. ±
53		0.877 Ac. ±
54		0.877 Ac. ±

PARTS 45, 46, 47, 48, 49, 50, 51, 52, 53, 54 AND 55
ARE SUBJECT TO THE ENCUMBRANCES AND EASES SET OUT
IN PLAN 288-12 (L.S.) AND ARE SUBJECT TO A RIGHT OF WAY PER PLAN NO. 287478
PART 46 IS SUBJECT TO A PORT OF WAY PER PLAN NO. 28877
PART 47 IS SUBJECT TO A PORT OF WAY PER PLAN NO. 28877
PART 48 IS SUBJECT TO A PORT OF WAY PER PLAN NO. 28877
PART 49 IS SUBJECT TO A PORT OF WAY PER PLAN NO. 28877
PART 50 IS SUBJECT TO A PORT OF WAY PER PLAN NO. 28877
PART 51 IS SUBJECT TO A PORT OF WAY PER PLAN NO. 28877
PART 52 IS SUBJECT TO A PORT OF WAY PER PLAN NO. 28877
PART 53 IS SUBJECT TO A PORT OF WAY PER PLAN NO. 28877
PART 54 IS SUBJECT TO A PORT OF WAY PER PLAN NO. 28877
PART 55 IS SUBJECT TO A PORT OF WAY PER PLAN NO. 28877

LEGEND

1. BOUNDARY SURVEY MONUMENT PLANS
2. BOUNDARY SURVEY MONUMENT PLANS
3. BOUNDARY SURVEY MONUMENT PLANS
4. BOUNDARY SURVEY MONUMENT PLANS
5. BOUNDARY SURVEY MONUMENT PLANS
6. BOUNDARY SURVEY MONUMENT PLANS
7. BOUNDARY SURVEY MONUMENT PLANS
8. BOUNDARY SURVEY MONUMENT PLANS
9. BOUNDARY SURVEY MONUMENT PLANS
10. BOUNDARY SURVEY MONUMENT PLANS
11. BOUNDARY SURVEY MONUMENT PLANS
12. BOUNDARY SURVEY MONUMENT PLANS
13. BOUNDARY SURVEY MONUMENT PLANS
14. BOUNDARY SURVEY MONUMENT PLANS
15. BOUNDARY SURVEY MONUMENT PLANS
16. BOUNDARY SURVEY MONUMENT PLANS
17. BOUNDARY SURVEY MONUMENT PLANS
18. BOUNDARY SURVEY MONUMENT PLANS
19. BOUNDARY SURVEY MONUMENT PLANS
20. BOUNDARY SURVEY MONUMENT PLANS
21. BOUNDARY SURVEY MONUMENT PLANS
22. BOUNDARY SURVEY MONUMENT PLANS
23. BOUNDARY SURVEY MONUMENT PLANS
24. BOUNDARY SURVEY MONUMENT PLANS
25. BOUNDARY SURVEY MONUMENT PLANS
26. BOUNDARY SURVEY MONUMENT PLANS
27. BOUNDARY SURVEY MONUMENT PLANS
28. BOUNDARY SURVEY MONUMENT PLANS
29. BOUNDARY SURVEY MONUMENT PLANS
30. BOUNDARY SURVEY MONUMENT PLANS
31. BOUNDARY SURVEY MONUMENT PLANS
32. BOUNDARY SURVEY MONUMENT PLANS
33. BOUNDARY SURVEY MONUMENT PLANS
34. BOUNDARY SURVEY MONUMENT PLANS
35. BOUNDARY SURVEY MONUMENT PLANS
36. BOUNDARY SURVEY MONUMENT PLANS
37. BOUNDARY SURVEY MONUMENT PLANS
38. BOUNDARY SURVEY MONUMENT PLANS
39. BOUNDARY SURVEY MONUMENT PLANS
40. BOUNDARY SURVEY MONUMENT PLANS
41. BOUNDARY SURVEY MONUMENT PLANS
42. BOUNDARY SURVEY MONUMENT PLANS
43. BOUNDARY SURVEY MONUMENT PLANS
44. BOUNDARY SURVEY MONUMENT PLANS
45. BOUNDARY SURVEY MONUMENT PLANS
46. BOUNDARY SURVEY MONUMENT PLANS
47. BOUNDARY SURVEY MONUMENT PLANS
48. BOUNDARY SURVEY MONUMENT PLANS
49. BOUNDARY SURVEY MONUMENT PLANS
50. BOUNDARY SURVEY MONUMENT PLANS
51. BOUNDARY SURVEY MONUMENT PLANS
52. BOUNDARY SURVEY MONUMENT PLANS
53. BOUNDARY SURVEY MONUMENT PLANS
54. BOUNDARY SURVEY MONUMENT PLANS
55. BOUNDARY SURVEY MONUMENT PLANS

SURVEYORS CERTIFICATE

CERTIFY THAT:

1. THE SURVEY AND PLAN ARE CORRECT AND IN ACCORDANCE
WITH THE ACT AND THE REGULATIONS UNDER THEREIN.
2. THE SURVEY HAS COMPLETED TO THE SATISFACTION OF THE
SURVEYORS.

DATE: June 22, 2006

GEORGE H. BRACKEN
CHARTERED LAND SURVEYOR

LAURENCE J. BRACKEN
CHARTERED LAND SURVEYOR

George Bracken Limited
CHARTERED LAND SURVEYORS
100 MAIN STREET, WEST
LEEDS, ONTARIO, CANADA
M5H 2R2
PHONE: (416) 223-1234 FAX: (416) 223-1234
EMAIL: info@bracken.com