

PLAN of SURVEY of
PART of LOT 6, CONCESSION 13
 Geographic Township of Loughborough
TOWNSHIP OF SOUTH FRONTENAC
 COUNTY of FRONTENAC

SCALE = 1:1000



HOPKINS CHITTY LAND SURVEYORS INC.
 -2024-

THE INTENDED PLOT SIZE OF THIS PLAN IS 914mm IN HEIGHT
 BY 610mm IN WIDTH WHEN PLOTTED AT A SCALE OF 1:1000

PART 1
 13R-22491
 PIN 36272-0590 (LT)

PLAN 13R-23285

Received and deposited

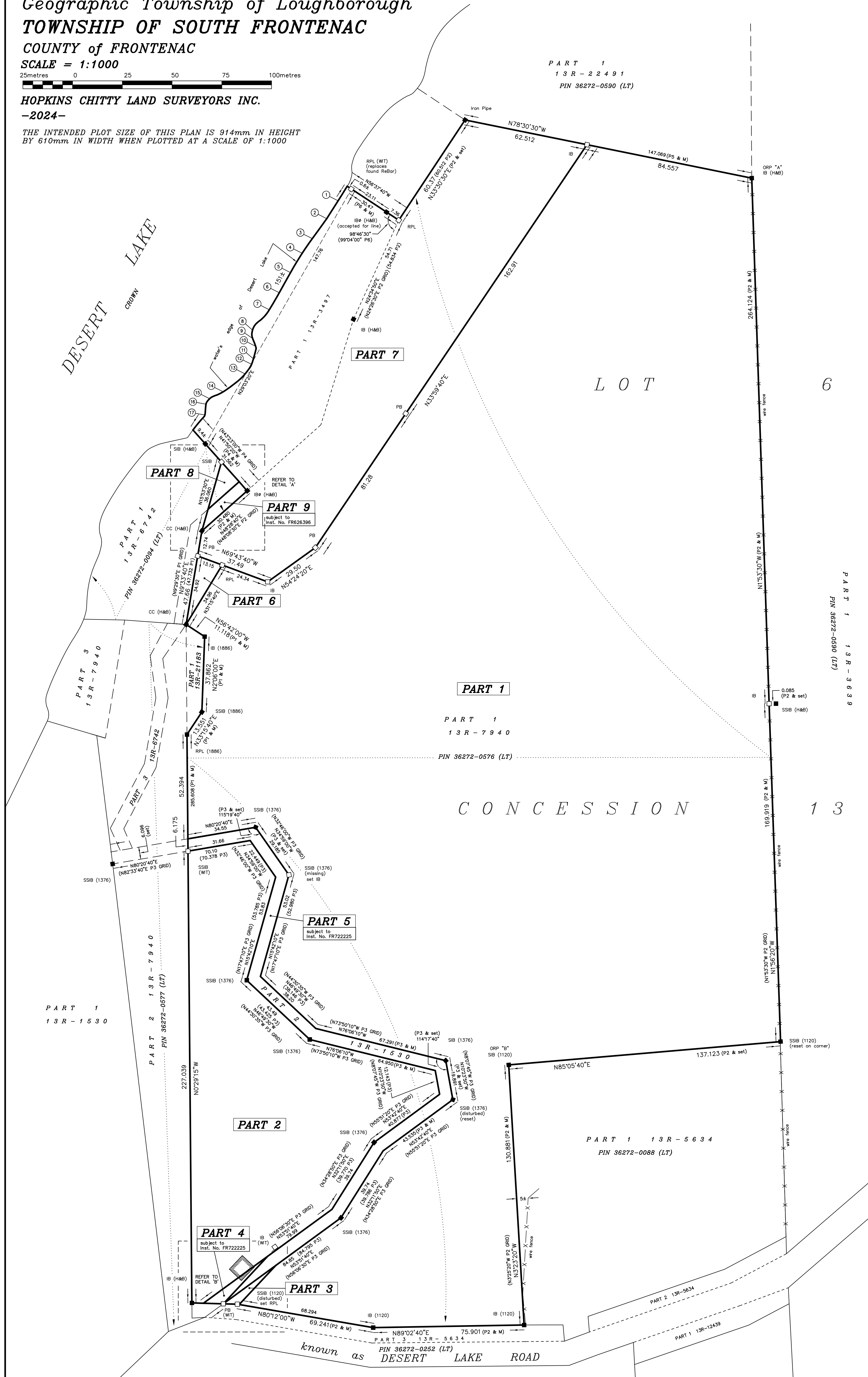
December 11th, 2024

Anita Clark

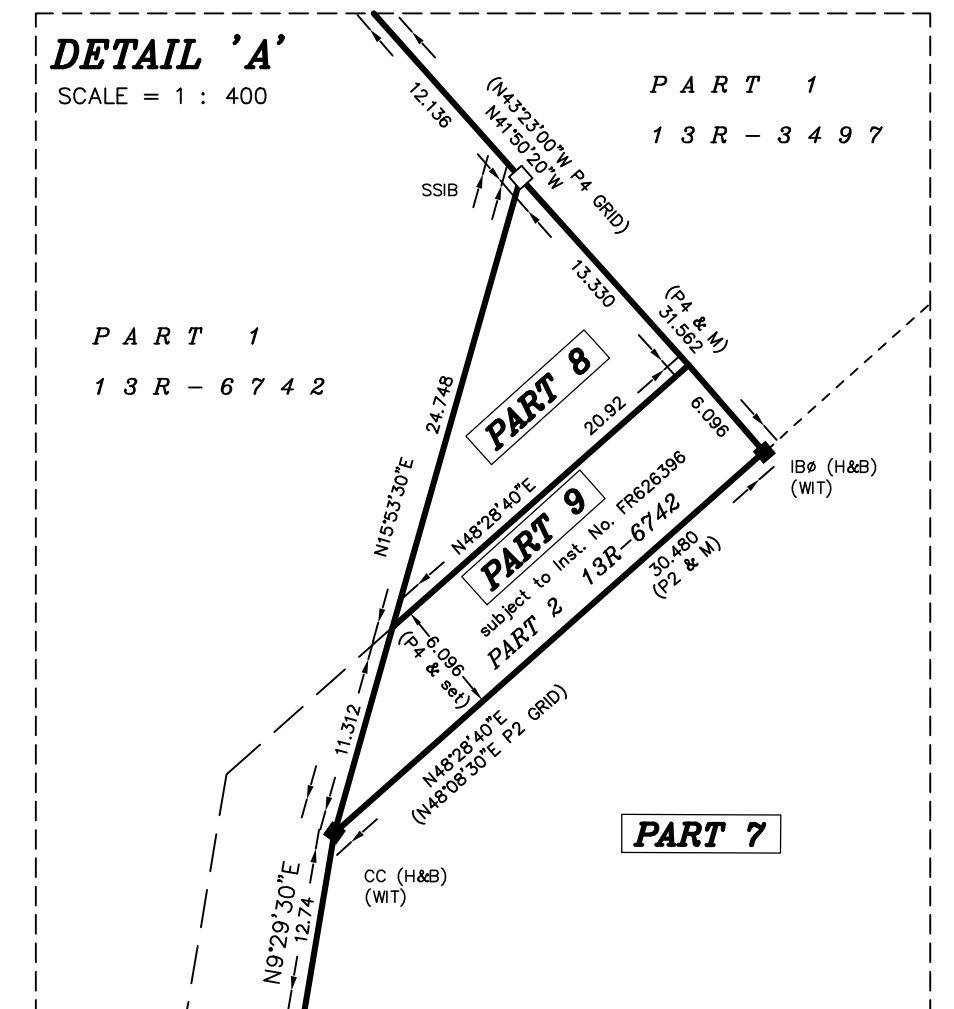
Representative for the
 Land Registrar for the
 Land Titles Division of
 Frontenac (No.13)

SCHEDULE			
PART	LOT	CON.	PIN No.
1	Part of 6	13	All of 36272-0576 (LT)
2			
3			
4			
5			
6			
7			
8			
9			Part of 36272-0094 (LT)

PARTS 4 and 5 are shown to be subject to Right-of-Way as set out in Instrument No. FR722225
 PART 9 are shown to be subject to Right-of-Way as set out in Instrument No. FR626396



Water's edge of Desert Lake Coordinate Table		
Northing	Easting	
1	4931028.4	373480.7
2	4931019.5	373475.0
3	4931009.5	373467.8
4	4931002.1	373462.7
5	4930992.4	373456.8
6	4930983.3	373451.2
7	4930973.7	373446.2
8	4930963.5	373437.7
9	4930959.3	373437.8
10	4930954.8	373438.5
11	4930949.1	373438.2
12	4930946.3	373437.3
13	4930941.5	373434.0
14	4930935.5	373429.0
15	4930929.0	373416.2
16	4930926.3	373414.3
17	4930920.9	373413.8



LEGEND:

- SSIB'S PLANTED DUE TO INSUFFICIENT OVERBURDEN
- denotes Planted Survey Monument
 - Found Survey Monument
 - SSIB Short Standard Iron Bar
 - IB Iron Bar
 - IBa Iron Bar (round)
 - RB Rock Bar
 - RPL Rock Plug
 - (WT) Witness
 - (M) Measured
 - (R.P.) Registered Plan
 - (HP) Hydro Pole
 - 1376 Peter S. Hopkins, O.L.S.
 - H&B Humphries & Burgham, O.L.S.
 - 1120 James A. Munnis, O.L.S.
 - 1886 Phil W. Chitty, O.L.S.
 - P1 Plan 13R-21183
 - P2 Plan 13R-7940
 - P3 Plan 13R-1530
 - P4 Plan 13R-6742
 - P5 Plan 13R-22491
 - P6 Plan 13R-3497

OBSERVED REFERENCE POINTS (ORP'S) DERIVED FROM GPS
 OBSERVATIONS USING PRECISE POINT POSITIONING (PPP) SERVICE,
 UTM ZONE 18, NAD83 (CSRS) (2010.0)
 COORDINATES TO RURAL ACCURACY PER SEC. 14(2) OF O.REG. 216/10

POINT ID	NORTHING	EASTING
ORP 'A'	4931039.8	373688.5
ORP 'B'	4930594.4	373566.4

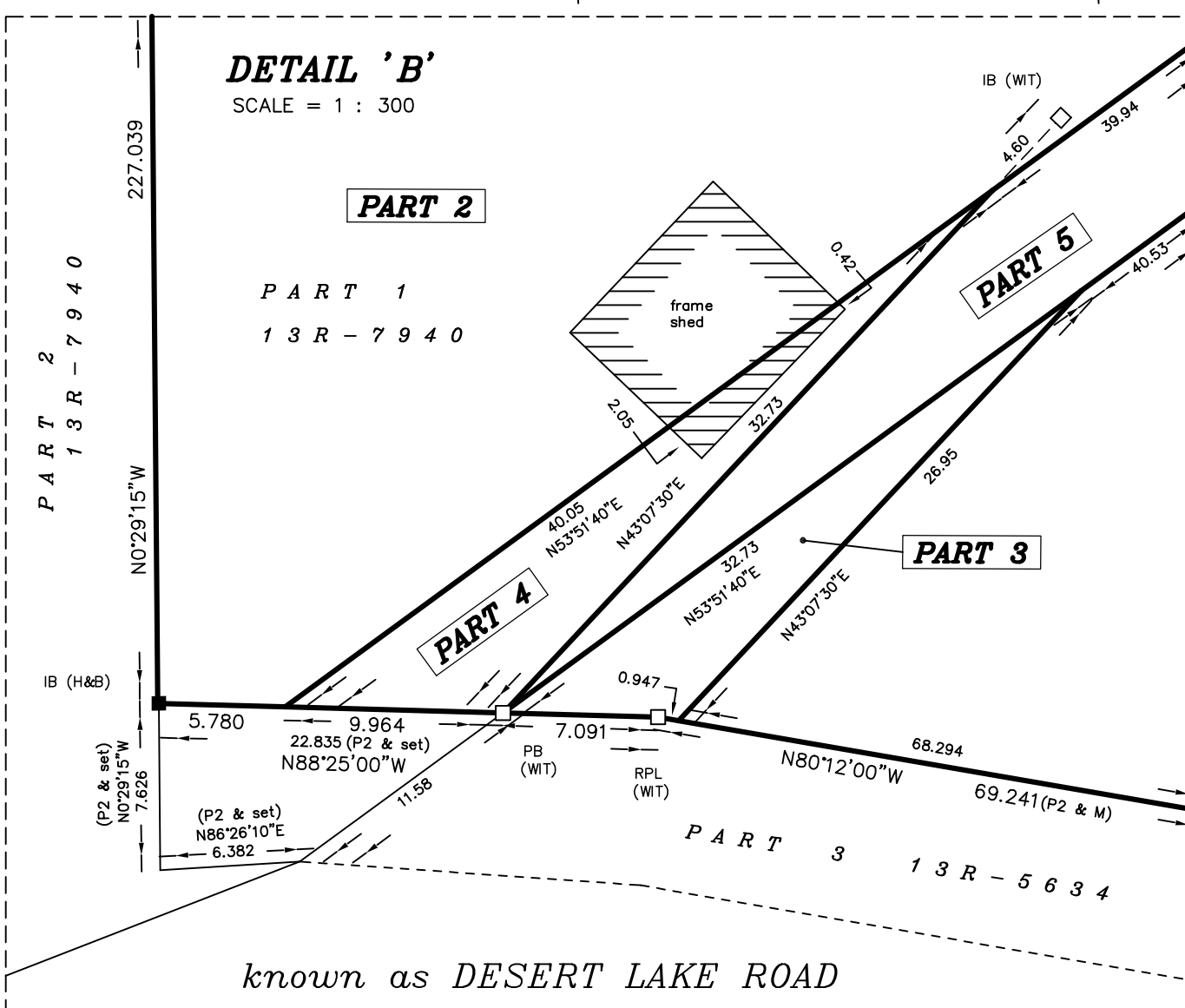
COORDINATES CANNOT, IN THEMSELVES BE USED TO
 RE-ESTABLISH CORNERS OR BOUNDARIES SHOWN ON THIS PLAN.

BEARINGS ARE UTM GRID, DERIVED FROM MULTIPLE REAL TIME KINEMATIC
 (RTK) OBSERVATIONS FROM MONUMENT "A" TO "B", UTM ZONE 18
 (75° WEST LONGITUDE) NAD83 (CSRS) (2010.0)

FOR BEARING COMPARISONS, A ROTATION OF 1°00'00" CLOCKWISE WAS
 APPLIED TO BEARINGS ON PLAN 13R-7940.

DISTANCES ARE GROUND AND CAN BE CONVERTED TO GRID BY
 MULTIPLYING BY THE COMBINED SCALE FACTOR OF 0.99779.

DISTANCES AND COORDINATES SHOWN ON THIS PLAN ARE IN METRES
 AND CAN BE CONVERTED TO FEET BY DIVIDING BY 0.3048



SURVEYOR'S CERTIFICATE:

- I CERTIFY THAT:
- This Survey and Plan are correct and in accordance with the SURVEYS ACT, the SURVEYORS ACT and the LAND TITLES ACT and the REGULATIONS made under them.
 - The SURVEY was completed on the 19th day of September, 2024

DATE: September 27th, 2024

Thomas MacDonald
 THOMAS MacDONALD - O.L.S.

THIS PLAN OF SURVEY RELATES TO AOLS PLAN SUBMISSION
 FORM NUMBER V-88475

Party Chief:	AT	Instrument:	MP	Checked By:	TGM	Plan By:	TE



HOPKINS CHITTY
LAND SURVEYORS INC.
 Ontario Land Surveyors
 www.hopkinschitty.com

1224 GARDINERS ROAD, SUITE 102
 KINGSTON, ONTARIO K7P-0G2
 Tel (613) 384-9266
 Fax (613) 384-3513

PROJECT No. 2024-0529
 LOT 6, CONCESSION 13
 TOWNSHIP OF LOUGHBOROUGH