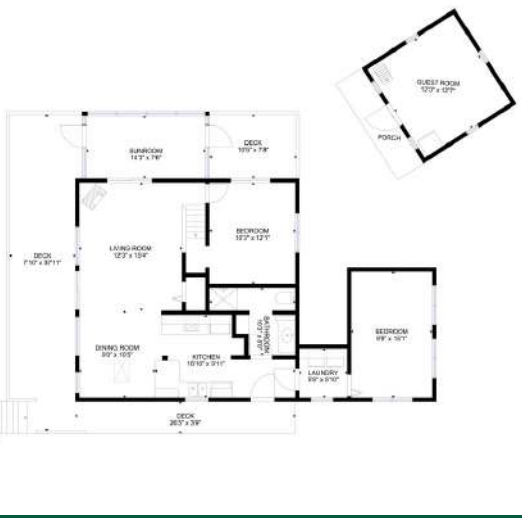




Stunning A-Frame Cottage on Private Island



1 & 2 Birch Island, Tichborne, ON

- # 40644981
- \$ \$699,000
- 2 Bedrooms
- 1 Bathroom
- 1.15 Acres
- Bobs Lake

Bring the family to this Bobs Lake Cottage paradise with plenty of room to enjoy time at the lake!

Welcome to Birch Island! This stunning property is over an acre in size and is located in a private bay with over 800' of shoreline with deep water off the dock, and has a private beach and an island that is covered in Canadian shield and tall pine trees. The property has stunning elevated views, a west facing 'sunset point' and a brand new two story bunkie just a short distance away from the large A-frame cottage. This charming cottage offers 2 bedrooms on the main level, an upper loft area with 3 beds for family and friends, a full bathroom with septic, full kitchen, laundry room, living room, dining room, screened in porch, and plenty of indoor/outdoor space to relax and enjoy the panoramic lake views.

Your Total Real Estate Package!

Tammy & Heath Gurr
Royal LePage ProAlliance Realty, Brokerage




GURR
REAL ESTATE GROUP
www.gurreathomes.com

info@gurreathomes.com (613) 273-9595



Not intended to solicit clients under contract. The trademarks REALTOR®, REALTORS® and the REALTOR® logo are controlled by The Canadian Real Estate Association (CREA) and identify real estate professionals who are members of CREA. Used under license. The trademarks MLS®, Multiple Listing Service® and the associated logos are owned by The Canadian Real Estate Association (CREA) and identify the quality of services provided by real estate professionals who are members of CREA. Used under license.